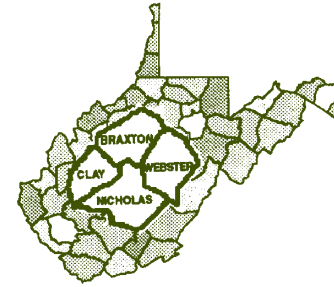




ELK CONSERVATION DISTRICT  
740 AIRPORT RD., SUTTON, WV 26601  
PHONE: 304-765-2535 FAX: 304-765-9635  
EMAIL: ECD@WVCA.US



**ELK CONSERVATION DISTRICT**  
**740 AIRPORT RD., SUTTON, WV 26601**  
**PHONE: 304-765-2535 FAX: 304-765-9635**  
**EMAIL: ECD@WVCA.US**

**November 2019**

**Serving Braxton, Clay, Nicholas, & Webster Counties**

**Visit and Like us on Facebook: Elk Conservation District**

## **ECD Meetings & Office Closures**

- OFFICE CLOSED: Thur. & Fri., Nov. 28 & 29: Thanksgiving Holiday
- Board Meeting: Tues., Dec. 17 at 10 AM  
Annual Christmas Luncheon noon (immediately following the meeting).  
Please contact the office if you will be attending.
- OFFICE CLOSED: Tues. & Wed., Dec. 24 & 25: Christmas Holiday
- OFFICE CLOSED: Tues. & Wed., Dec. 31 & Jan. 1: New Year Holiday
- Executive Committee Meeting: Tues., Jan. 14 at 10 AM
- OFFICE CLOSED: Mon., Jan. 20: Martin Luther King, Jr. Holiday
- Board Meeting: Tues., Jan. 28 at 10 AM

All meetings are held at the District Office unless otherwise noted.

Meeting dates are subject to change. Changes will be posted/advertised as soon as they are known.



The West Virginia Century Farm Program is designed to recognize those families who have been farming the same tract of land for at least 100 years. Century Farms, Sesquicentennial Farms and Bicentennial Farms will be recognized. A Century Farm is one that has been in continuous operation by the same family for at least 100 years. A Sesquicentennial Farm has been in continuous operation by the same family for at least 150 years, and a Bicentennial Farm has been in continuous operation by the same family for at least 200 years.

A family member must live on the farm or must be an integral part of the day-to-day operation of the farm enterprise. The farm must consist of at least 10 acres of the original holdings and gross more than \$1,000 annually from farm products. Line of ownership from the first family member owning the land may be through wives, husbands, children, brothers, sisters, nephews, or nieces.

Contact the ECD Office for additional information.

### **Board of Supervisors**

Chairman: Clark Mollohan - Webster County  
Vice Chairman: VACANT  
Secretary/Treasurer: Shirley Hyre - Braxton County  
Donald Burroughs - Braxton County  
Rebecca Lilly - Clay County  
VACANT SEAT - Clay County  
Ken Stowers - Nicholas County  
VACANT SEAT \_ Nicholas County  
Mike Smalley - Webster County

District Manager: Suzie Steele  
District Conservationist: Russell Young  
District Assistant/Education Programs: Tammy Hoover

**The Elk Conservation District, serving Braxton, Clay, Nicholas, and Webster Counties, is one of 14 districts within WV whose mission is to provide for and promote the protection and conservation of West Virginia's soil, land, water and related resources for the health, safety and general welfare of its district's citizens.**

### **In This Issue**

- Agricultural Enhancement
- Century Farm Info
- Equipment Rental
- Grant Awards
- Nature Trail
- Partnering Agency Information
- Photo Contest
- Poster Contest
- Soil Testing
- Stream Blockage Info
- Supplies

# WANTED

Are you interested in becoming an  
Elk Conservation District Supervisor representing  
**Clay or Nicholas County?**

Are you a landowner living in  
**Clay or Nicholas County?**

Do you have a strong interest in the conservation of  
West Virginia's natural resources?

Are you an active or retired farmer with five years  
Of farming experience?

If so, you may qualify to become an Elk Conservation District Supervisor.  
This is not a full time position.

Pay is a per diem and travel expense reimbursement on district meeting days and other district activities.

For more information, contact:  
Elk Conservation District  
304-765-2535

## Conservation Poster Contest

The ECD invites all school age children to participate in  
a national conservation poster contest sponsored by the  
National Association of Conservation Districts.  
Any child who wishes to participate may do so.  
Posters must be received by May 1st.

**Theme for 2020 is**  
**"Where Would We BEE Without Pollinators"**



The judging will be based on the entry's conservation message, visual effectiveness, originality and universal appeal. All posters created by kindergarten through twelfth graders will be entered in local competition and be considered.

**Grade categories: K-1, 2-3, 4-6, 7-9 and 10-12.**

**Poster size for all grades is half sheet or 14" x 22".**

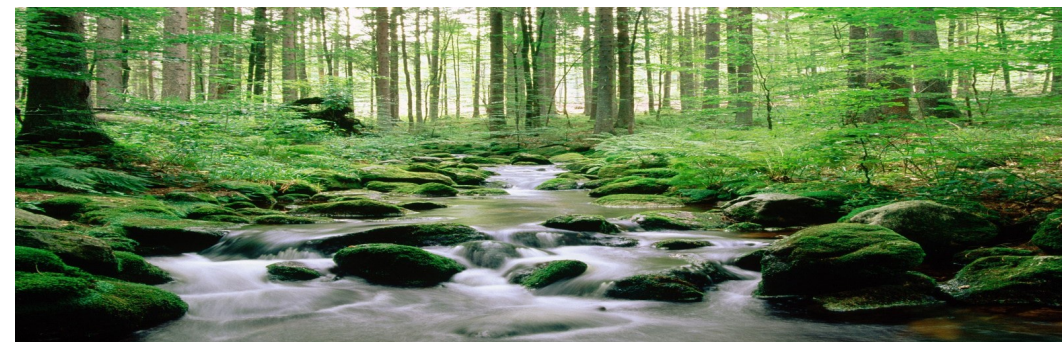
The 2020 Stewardship title **"Where Would We BEE Without Pollinators"** must be on the front of the poster. No other title is to be used. Any media may be used to create a flat or two dimensional effect (paint, crayon, colored pencil, charcoal, paper or other materials). **Back of each poster MUST have student's name, grade level, teacher's name and school.**

Entries must be submitted to the District no later than May 1, 2020 to be eligible.

For more information or an entry form, please contact the District Office at 740 Airport Rd., Sutton, WV 26601, call 304-765-2535, email [ecd@wvca.us](mailto:ecd@wvca.us), see the district website at <http://www.wvca.us/districts/ecd.cfm>, or the District's Facebook page.

## PARTNERING AGENCY INFORMATION:

- **Dec. 6-7:** Mountaineer Cattlemen's College at Stonewall Resort, for more information and to register: <http://epay.wvsto.com/WVU/WVUANREvents/2019-5th-Annual-Mountaineer-Cattlemens-College-Dec-6-7-P70.aspx>  
*Dec. 7 Educational sessions include:*  
NCBA Policy Update  
Fescue Impacts on Reproduction  
Today vs 2039: Similarities and Differences  
Meat Cutting Demo (Buzz Foods)  
BQA Update and Training
- **Jan. 16:** WVU Extension Dinner Meeting 6:30 p.m. @ Jackson's Mill  
Guest Speaker Tom Basden - Soil Testing and Fertility
- **Jan. 20:** Braxton County Farm Bureau 6 p.m. @ Flatwoods Community Building  
Guest Speaker Lewis Jett - Starting Seeds
- **Feb. 13:** WVU Extension Dinner Meeting 6:30 p.m. @ Jackson's Mill  
Guest Speaker Steve Boyles - Cattle Handling
- **Feb. 17:** Braxton County Farm Bureau 6 p.m. @ Flatwoods Community Building  
Guest Speaker Johnny King - Meet your Forester



### **Trees for Kids: Empowering the Next Generation of Conservationists**

The Elk Conservation District was awarded a grant from West Virginia American Water's 2019 Environmental Grant Program in the amount of \$1,500.00 to support a Trees for Kids project. The grant will provide educational materials and training on the vital role trees play in keeping our waters clean and our soils stable. Each third (3rd) grade student in Braxton, Clay, Nicholas, and Webster counties will receive a native WV tree species to plant as well as a book on identifying trees in WV. Each elementary school in all four (4) counties will receive a fruit tree to plant on their grounds. Lessons will focus on benefits of reforestation, biodiversity, and surface water protection. The ECD will work in cooperation with their partnering agencies and school systems to present the trees and curriculum materials to the students.

Special thanks to WV Conservation Agency/ECD Conservation Specialist,  
Russell Young, for writing this grant!

And a HUGE thank you to WVAWC for assisting in the funding of this project!





### **Braxton County Middle School Nature Trail**

ECD with input and assistance from the Braxton County Board of Education and Braxton County Middle School, along with other agencies and community partners is in the process of preliminary cleanup and maintenance to the existing BCMS Nature Trail.

The nature trail is located on BCMS property; however, ECD has assumed responsibility for leading the ongoing maintenance and repair work. Most recently, 8 shrubs, 150 bulbs and approximately 50 perennial plants along with some mulch was added to the nature trail. Also, added was a butterfly garden, shrubs and perennial plants to one of the outdoor classroom areas.

The BCMS Nature Trail workplan developed by ECD prioritizes necessary cleanup and repair work for the nature trail, along with determining individuals and community resources that will be involved in the process. A preliminary timeline for ongoing maintenance and planning for 2020 activities which ECD estimates that the cleanup and repair work will be completed.

ECD looks forward to the partnership with the Braxton County public-school system and community partners to move this project forward and restore the BCMS Nature Trail to the intended purpose.



### **The Growing Project: Butterflies & Frogs**

ECD was awarded a grant in the amount \$1,630 to implement *The Growing Project: Butterflies & Frogs* project in every Nicholas County public-school first grade classroom to incorporate early learning of life cycle stages using nature in the elementary schools. The grant award period is January 1, 2020 through May 31, 2020. The Butterfly Garden Live Cup of Caterpillar and Tadpole to Frog school kits will allow for the use and engagement of the student's imagination and creativity while observing the life cycle of insects and animals.

This project has the potential to impact 275 first-grade students in the public-school system in Nicholas County. Nicholas County Board of Education has reported 275 first-grade students enrolled for 2019-2020, with 138 of those being boys and 137 of those being girls. This would be 15 first grade classrooms in Nicholas County. By providing one of each school kit to first grade classrooms, it allows the first-grade students to be introduced at an early age to life cycle stages through nature in a hands-on learning setting. This grant will provide the necessary funding to purchase the school kits for the public-school first grade classrooms. The funding for this project provides for a partnership collaboration between a non-profit, government and all public elementary schools serving Nicholas County.

Special thanks to ECD District Assistant,  
Tammy Hoover, for writing this grant!  
AND A HUGE THANK YOU TO THE NICHOLAS  
COUNTY COMMUNITY FOUNDATION FOR  
AWARDING ECD THIS GRANT!

Emergency Watershed Protection is only used during a State or Federal Emergency Declaration in response to a sudden disaster.

In cases of extreme flooding, the WVCA will work with local, state and federal agencies to determine the extent of flood-related damages and to relieve blockages from streams.

Woody debris, trash and any other items found blocking the stream will be removed and disposed of.

Please contact  
Kim Neal, Watershed  
Office Coordinator  
304-872-4302



### **Do I need a permit to remove debris from a waterway?**

Landowners can do the following to clean and open a channel without obtaining a permit:

- Debris may be pulled from a stream by vehicle or motorized equipment from the top of streambanks using winches, chains, or cables
- Handheld tools like chainsaws, axes, and handsaws may be used to cut debris in waterways into smaller pieces.
- Downed trees still attached to streambanks can be cut to the stump. DO NOT remove the stumps as they keep streambanks from eroding.
- All debris removed from the waterway must be removed from the floodplain.

### **A permit is required if the following applies:**

- Will disturb the stream bed or bank.
- Requires the use of machinery like excavators or backhoes in the stream channel or below the top of the streambank.
- Is in a stream with endangered species.

### **Some debris can simply be left alone...**

In general, wood debris that does not pose a threat to bridges, houses, or other property does not need removed. It can be a good thing as debris lodged in banks can provide an aquatic habitat, reduce stream flow velocity, and in some cases, reduce the potential for downstream flooding. If you have further questions or concerns, please contact the ECD office.





### Agricultural Enhancement Programs

The ECD focuses on 4 primary programs within Agriculture Enhancement; Lime (Fall only), Nutrient Management/Fertilizer (Spring only), Cover Crop (Fall Only), and Exclusion & Division Fence. These are cost share reimbursement programs. Approval is based on a ranking system with two sign up periods. Please contact the office for additional information.

### Equipment Rentals & Supply Sales

Available to rent to our cooperators are the following pieces of equipment:

- 2 & 4 Ton Lime Spreaders
- No Till Seeder
- Weed Wiper
- Sprayers
- Potato Planter/ Hiller
- Potato Harvester

The district has trough supplies available for purchase, including but not limited to pipe, spring tiles, lids, floats and valves. We also keep a supply of bentonite to help with pond leaks.

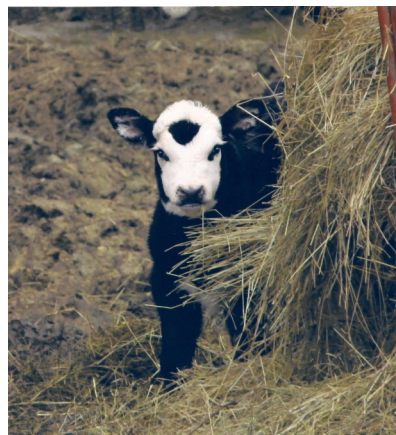
## Conservation Photo Contest

The Annual Conservation Photo Contest for amateur photographers in Braxton, Clay, Nicholas and Webster Counties is part of the WV Association of Conservation District Supervisors Conservation Photo Contest and the National Association of Conservation Districts Conservation Photo Contest.

There are four main categories for photos: Conservation Practices, Close-Up Conservation, Conservation in Action, & Conservation across America. All photos submitted must be taken in West Virginia.

Black & white prints, color prints, color slides and prints from digital photos are all acceptable and will be judged together. Photos must be 8" x 10". Judges prefer that photos not be matted or framed. A completed entry form must accompany each photo. Note that photos will not be returned. Photographs will be judged on technical merit, composition and creativity.

Contest deadline is June 21, 2020. To obtain an entry form, or for more information, contact the District Office at 740 Airport Rd., Sutton, WV 26601, call 304-765-2535, email [ecd@wvca.us](mailto:ecd@wvca.us), see the district website at <http://www.wvca.us/districts/ecd.cfm>, or the District's Facebook page.



Got Milk - by Carol Dillon

# Taking Soil Samples

THE WVU SOIL TESTING LAB

## WHEN?

- > Late summer- early spring
- > 3 or more months after application of fertilizer or lime
- > Avoid taking samples when soil is wet
- > Plan Ahead: use your soil test results to purchase fertilizers and soil amendments

How often should I have my soil tested?

Garden	Every Fall
Agricultural crops	Every 1-2 years
Pastures	Every 3-4 years
Lawns	Every 4 years

For additional information visit : [soiltesting.wvu.edu](http://soiltesting.wvu.edu)  
or  
your local extension office

## HOW TO SELECT AND SEND YOUR SAMPLES

### For Areas less than 1 acre:

- Choose 7-10 throughout the entire area
- Using a spade, auger or soil probe take a soil sample at the appropriate depth (see table below)
- Place samples in a hard container
- Remove any grass, debris, or rocks from the samples
- Crumble and mix the samples
- Allow the composite samples to air dry
- Place 1-2 cups of soil in a Ziploc bag

- Completely and legibly fill out the information sheet and attach it to the sample

### For areas 1-10 acres:

- Choose at least 15-30 locations throughout the entire area
- Using a spade, auger or soil probe take a soil sample at the appropriate depth (see table below)
- Place samples in a hard container
- Remove any grass, debris, or rocks from the samples

- Crumble and mix the samples
- Allow the composite samples to air dry
- Place 1-2 cups of soil in a Ziploc bag
- Completely and legibly fill out the information sheet and attach it to the sample

### Mailing your Samples:

Send samples in a box or padded envelope to:  
*WVU Soil Test Lab*  
*PO Box 6108*  
*Morgantown, WV 26505*

## HOW DEEP SHOULD I TAKE MY SAMPLES?

Home Gardens	To Tillage Depth
Agricultural Crops- Conventional Tillage	To Tillage Depth
Agricultural Crops- No -till	6 inches split in two samples: a) top 2 inches b) lower 4 inches
Pastures	2-4 inches
Meadows	4-6 inches
Lawns	Existing: 4 New: 6 inches

