

# **Little Kanawha Conservation District**

Board of Supervisors Meeting  
January 10, 2019, 10:00 AM  
Mill Run Ag Service Center, Parkersburg, WV

Attending were:

**\* Supervisors Attending ♦ Supervisors by Conference Call**

- \*Ivan Banks, Ritchie County
- \*Bob Buchanan, Wood County  
Dexter Graham, Wood County
- \*Mike Nichols, Ritchie County
- \*Sam Sheets, Roane County  
Thanh Ashman, Roane County
- \*Roger Shaver, Wirt County
- \*Roseann Adams, Wirt County

**Others attending or ♦ Others by Conference Call:**

- Delmas Carr, Wood County Associate Supervisor
- Greg Stone, NRCS
- Jason Crislip, NRCS
- Jeff McCrady, DNR
- DJ Allen, LK RC&D
- Nick Beaver, NRCS
- ♦Aimee Figgatt, WVCA
- Dan Elliott, TVCD & Daughter
- Mikayla Hayes, LKCD
- Jessica Nichols, WVCA

Call to order & Pledge of Allegiance –

- Mike Nichols called the meeting to order at 10:05 a.m.
- Pledge led by Delmas Carr and recited by all.

Introduction of Visitors – Their reports and concerns

- Dan Elliott discussed NFHR O&M and distributed pictures taken January 7, 2019 of the debris that is currently standing at the riser. Discussed a gate be installed to help keep the logs from collecting on the riser. He feels that there is a design flaw in the riser that creates a safety hazard with logs collecting. He talked about work that they are capable of doing for the District. Possible entering into an agreement for the upkeep of our structures. Discussed benefits of hiring a District over putting out for bid. They also do EWP work as well as O&M, etc. Jason Crislip will send information to Jessica Nichols about the cable used at Elk Water Dam. Information presented Appendix A.

## **District Business**

### **Minutes of Previous Meeting**

Discussed in depth the handling of minutes and reports. *Motion to approve the minutes as presented was made by Bob Buchanan and second by Roger Shaver. Majority approved. Motion carried.*

### **Approval of Financial Reported Items**

- Audit – LOR – *Motion to write a letter of request for \$2,500 as reimbursement for the FY17 audit was made by Roger Shaver and second by Ivan Banks. Majority approved. Motion carried.*
- Review of reports  
*Motion to move residual District funds currently held in the Interest Account-2180, Fund-1015, Program 23002 in the amount of \$12,004.49 to the District Account-1779 was made by Bob Buchanan and second by Roger Shaver. Majority approved. Motion carried.* Information on pages 1-17 of the District meeting packet filed for audit.

### **Approval of Cooperators**

Agreements – Charles Hopkins – Wood  
Susan Davis – Wood  
Hazel Boggs – Roane  
Brian Stump – Calhoun  
Debra Allman - Calhoun  
Robert Bush - Wood

Terminations – None

*Motion to approve new cooperators was made by Sam Sheets and second by Bob Buchanan. Majority approved. Motion carried.*

Correspondence – Non-Action Items – None at this time

### **Correspondence – Action Items –**

- Junior Master Gardner Instructor Training -  
Aimee Figgatt discussed the training to be held in Roane County on February 1<sup>st</sup> from 9 a.m. to 2 p.m. Talked about the expectations of the program across the state. *Motion to cover lunches up to \$150 was made by Roseann Adams and second by Sam Sheets. Majority approved. Motion carried.* Request supervisors attend or at least stop by if possible. Information in District meeting packet pages 18-21.
- Winter Educational Meeting Fund Request – Discussed how many people attend. *Motion to approve support in the amount of \$450 was made by Sam Sheets*

*and second by Ivan Banks. Majority approved. Motion carried.* Information in District meeting packet pages 22-23.

- National Watershed Coalition Membership  
Discussion of benefits that are received for the membership. Sam Sheets talked about this information. Greg Stone informed the District regarding how the coalition assists with raising the awareness of dams. *Motion to pay \$75 membership fee was made by Sam Sheets and second by Bob Buchanan. Majority approved. Motion carried.* Information in District meeting packet page 24.

### **Report of Agencies and Others**

#### **LKCD Associate Supervisors Report**

Nothing at this time.

#### **Field Staff Report, NRCS, District, Jason Crislip**

- Greg Stone talked about the federal lapse in funding. Funds from previous years are allowing NRCS in WV to stay open. NRCS is happy to assist as possible for other sister agencies where they can.
- Louis Aspey is being assigned to four months in Washington DC. Nicole Viars will be acting for that time.
- He reported that he will be the new State Conservationist in Kentucky. Tomorrow is his last day in the state. Demerias Mortensen will be acting in his position till filled.
- Jason Crislip stated they have two high tunnels contracts obligated. Eleven applications left to obligate.
- New EQIP signup timelines are the same January 18<sup>th</sup> deadline.
- At the Wood County Beef Improvement educational meeting on the January 17<sup>th</sup> they listed on the agenda. There will be an educational winter meeting in Ritchie County on February 18<sup>th</sup>.
- Field staff have been working on the maintenance of old contracts.

#### **Field Staff Report, LKCD, Mikayla Hayes**

- Report on page 25 of the District meeting packet.
- Six individuals scheduled for forage and two for soil test.

#### **Field Staff Report, Forestry**

- Report on page 26 of the District meeting packet.
- Chuck Copeland has been promoted to Assistant State Forester in charge of Forest Management programs and will be a guest speaker at the WVACD quarterly meeting.

#### **Field Staff Report, WVCA**

Report on page 27 of the District meeting packet.

FSA, Eleanor Porter

Newsletters on pages 28-33 of the District meeting packet.

WV DNR Report, Jeff McCrady

- Acquired 32000 acres of land.
- Discussed the background history of Westvaco land. Talked about individual tracks of land around the District.
- Information discussed in Appendix B.

LK RC&D Report –

- Possible funds for North Fork Hughes River riser thru the mini grants. Mini Grants are due March 14<sup>th</sup>.
- Discussed upcoming projects, garden and project sharing.
- Discussed a sugar shack on wheel with a maple syrup demonstration.
- They have a new brochure that was shared. It and the monthly report can be found in Appendix C.

Solid Waste Authority Report

- Bob Buchanan reported there is not much being done at this time of year.
- They have provided picnic tables to Mountwood Park.
- The smell on I77 was due to methane gas. They are working to set up a way to burn off the methane gas on the I77 side as they do on the Rt50 side.

WVU Extension

Unable to attend.

### **Special Items of Interest**

Emergency Watershed Program/Stream Protection & Restoration Program

Nothing at this time.

North Fork Hughes River Updates & Issues

- Debris Removal Update – Mike Nichols discussed that this will be an ongoing thing. Bob Buchanan talked about the letter to the Dept. of Commerce. He has been talking to senators about putting it in their budget.
- Gas Well Update – Nothing at this time.
- Mussel study – Inquiring about the 2018 mussel study release date. Mussel study for 2016 on pages 72-165 of the District meeting packet.

Calhoun County Supervisor Position

- Email received on page 34 of the District meeting packet. The District recognizes that she will be unable to fulfill the position for Calhoun county supervisor.

- This vacancy needs advertised again. *Motion to pay for an advertisement in the Calhoun paper and the Hur Herald for the period of time being one month was made by Roger Shaver. Second by Sam Sheets. Majority approved. Motion carried.*

#### Outreach Materials Update

Information on pages 35-37 of the District meeting packet. *Motion by Ivan Banks to purchase 12 light weight and 12 heavy weight shirts in the amount of 24 shirts second by Sam Sheets. Discussion on the motion. Majority approved. Motion carried.*

#### Appalachian Grazing Conference 2019 – Farmers, District Staff

- Information on pages 37A-39 of the District meeting packet.
- Request for assistance with the conference. *Motion to send Mikayla Hayes and pay expenses for the 8<sup>th</sup> and 9<sup>th</sup> was made by Bob Buchanan and second by Roger Shaver. Majority approved. Motion carried.*
- *Motion by Bob Buchanan to cover the expenses for one farmer per each county to attend. Second by Roger Shaver. Majority approved. Motion carried.*

#### Suggested Board Meeting Dates

*Motion to approve dates as presented was made by Bob Buchanan and second by Roger Shaver. Majority approved. Motion carried.* Information on page 40 of the District meeting packet.

#### Local, National & State Meeting Report

##### Envirothon Committee – Potential Team Sponsorship

- Envirothon Committee information received on pages 41-46 of the District meeting packet.
- Sam Sheets stated that for each team the cost would be about \$700. Possible two teams from Roane County. *Roseann Adams moved to send five teams, one from each county, if no one applies from one county then those funds could be utilized in another county. Second by Sam Sheets. Majority approved. Motion carried.*

#### Grazing Conference Committee

Nothing at this time.

#### Grassland Committee

Nothing at this time.

#### WVACD

- WVACD Meeting information and prior minutes are on pages 47-59 of the District meeting packet.
- Bob Buchanan discussed potential modification of by laws for the WVACD.

- Regarding state meetings. These need to go to a one-day meeting. They are spending tax payer's funds to cover time that isn't of benefit. Committees could meet in advance by teleconference. Possibly up to 2 weeks in advance.
- The District concurs with Bob Buchanan regarding the potential changes in the by-laws and meeting schedules.

### **Active District Committee Reports**

#### **Equipment Committee –**

- Received the parts for the weed wiper repair.
- Tire on the old 2-ton in Parkersburg needs repaired.
- Dexter Graham will be doing the hitch repair on new lime spreader.

#### **Ag Enhancement Committee/Report**

- Reminder Letter – Will be sent today.
- Next year pollinators will be considered.
- Item #1 on the ranking forms will be requested being removed.
- Pasture condition practice remove from sheet.
- Sign up will begin the week of May 1st.
- AgEP Financial Report and additional information are contained on pages 60-69 of the District meeting packet.
- *Motion to approve applications for Critical Area Planting, Tina Knopp and Pasture Division Fencing, Rob Miller, Christina Grow, Paulette Burdette, Larry Gardner, Richard Phillips, Wayne Longfellow was made by Sam Sheets and second by Roger Shaver. Majority approved. Motion carried.*

#### **Budget Committee**

Nothing at this time.

#### **District Manager, Jessica Nichols**

Ag day – There will be no table, but the new displays will be there. Two supervisors possibly attending.

#### **WVCA Report, Kim Fisher**

Unable to attend. Report on pages 70-71 of District meeting packet.

### **Closing Activities**

#### **Calendar of Events**

January 21<sup>st</sup> – Martin Luther King Jr. Day – Holiday – Office Closed  
 January 22<sup>nd</sup> & 23<sup>rd</sup> – WVACD Quarterly Meeting – Flatwoods  
 January 30<sup>th</sup> – Ag Day at the Capitol  
 January 31<sup>st</sup> – Deadline for District's to submit AgEP comments  
 February 12<sup>th</sup> – District Board Meeting – Mill Run Ag Center, 10:00 a.m.

February 18<sup>th</sup> – Presidents Day, Holiday, Office Closed  
March 12<sup>th</sup> – District Board Meeting – Mill Run Ag Center, 10:00 a.m.  
April 16<sup>th</sup> – 18<sup>th</sup> Envirothon Competition  
April 22<sup>nd</sup> & 23<sup>rd</sup> – WVACD Quarterly Meeting – Pipestem State Park  
July 15<sup>th</sup> & 16<sup>th</sup> – WVCA Quarterly Meeting – Highlands Event Center, Triadelphia  
October 21<sup>st</sup> & 22<sup>nd</sup> -WVACD Quarterly Meeting – Flatwoods

Motion to Adjourn –

*Motion to adjourn was made by Roger Shaver and second by Bob Buchanan. Majority approved.*

*Motion carried.* Meeting adjourned at 12:15 p.m.

These minutes respectfully submitted by Roseann Adams, LKCD Secretary and Jessica Nichols, Recorder.

---

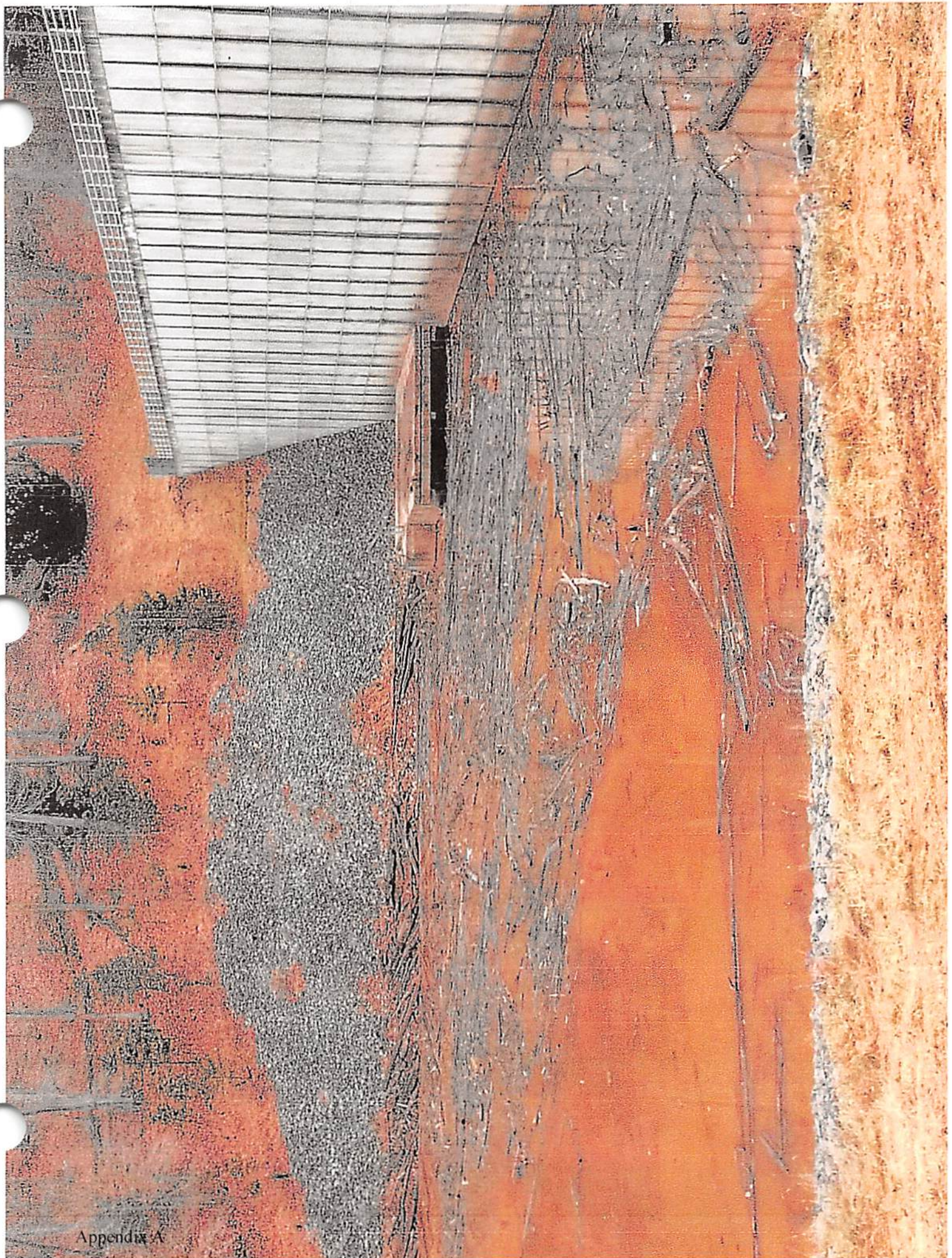
Mike Nichols, LKCD Chairman

---

Roseann Adams, LKCD Secretary

Date approved: \_\_\_\_\_











#### PHASE I PROPERTIES

Area	Tract Name	Acreage
Frozen Camp WMA	E. Kessel	293
	E. Elliott	69
	Comer Bros.	425
Federal Ridge WMA	E-Wagner (1)	479
	E-Wagner (2)	165
	Fleck	479
Sand Hill WMA	Morris	407
	Spice Run	1,303
	E-Hammett (1)	170
Hughes River WMA	Dry Ridge	4,021
	Camp	1,266
	Cabin	646
	Noble Rogers	281
Little Kanawha WMA	BS Blair	981
	Two Run	1,181

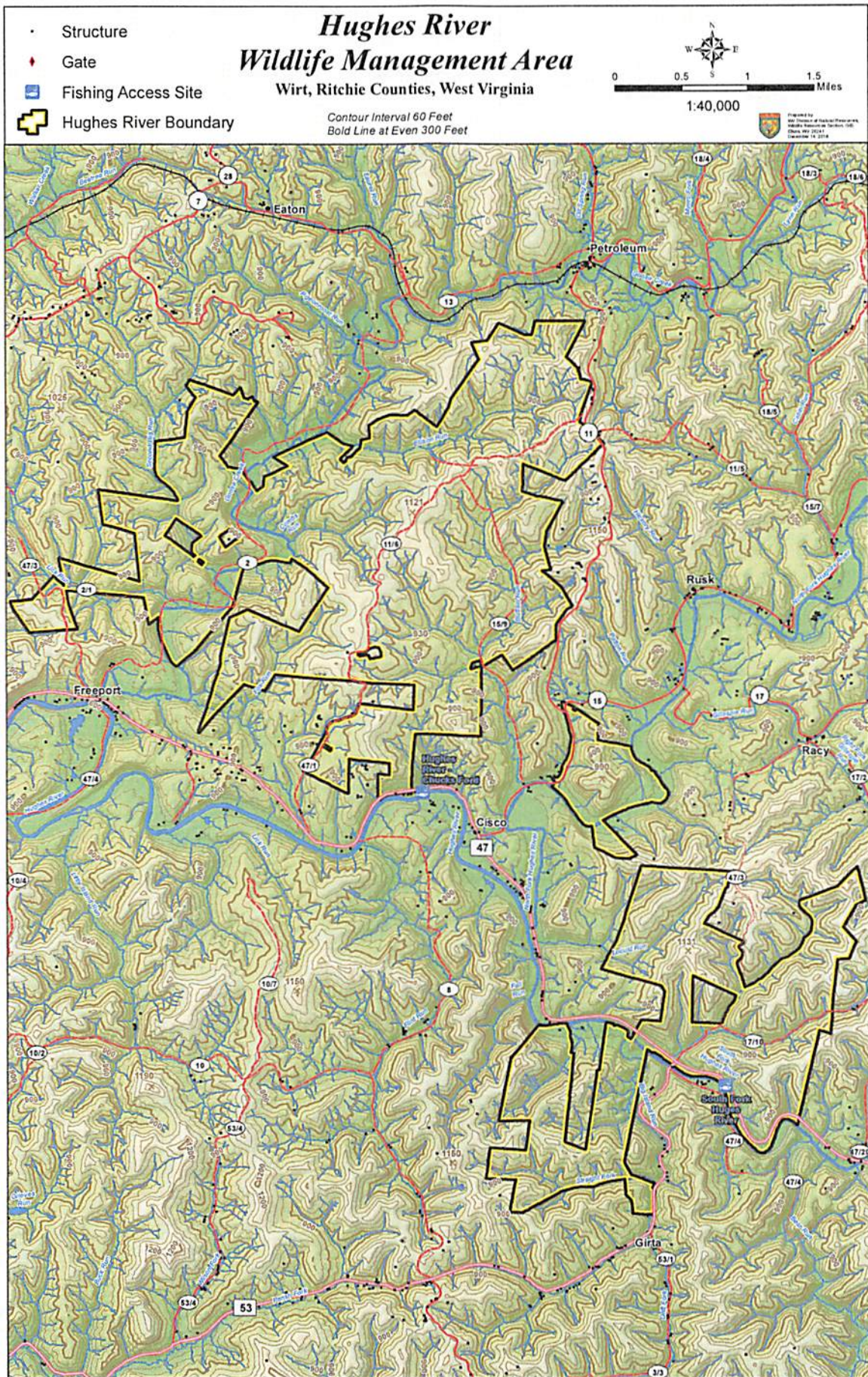
#### PHASE II PROPERTIES

Ritchie Mines WMA	Shrader Heirs	340
	Indian Creek	1,433
	AJ Eddy	89
	Timber Prod B	62
	Mackey/Maze	193
Walker Creek WMA	Tug Fork	2,156
	Shattuck Heirs	1,038
Frozen Camp WMA	Cole Farm	1,743
	Bonnett	317
	Hinzman	147
Lynncamp Run WMA	Lynncamp	1,832
	Jackson Bank	235
Toll Gate WMA	Drew	308
	Flanagan	630

#### PHASE III PROPERTIES:

Little Kanawha WMA	Bear Fork	239
	Rock Run	5,607
	Katys Run	2,409







# Sand Hill Wildlife Management Area

Pleasants & Ritchie Counties, West Virginia

- Structure
- WMA Property Boundary
- Mount Wood Park

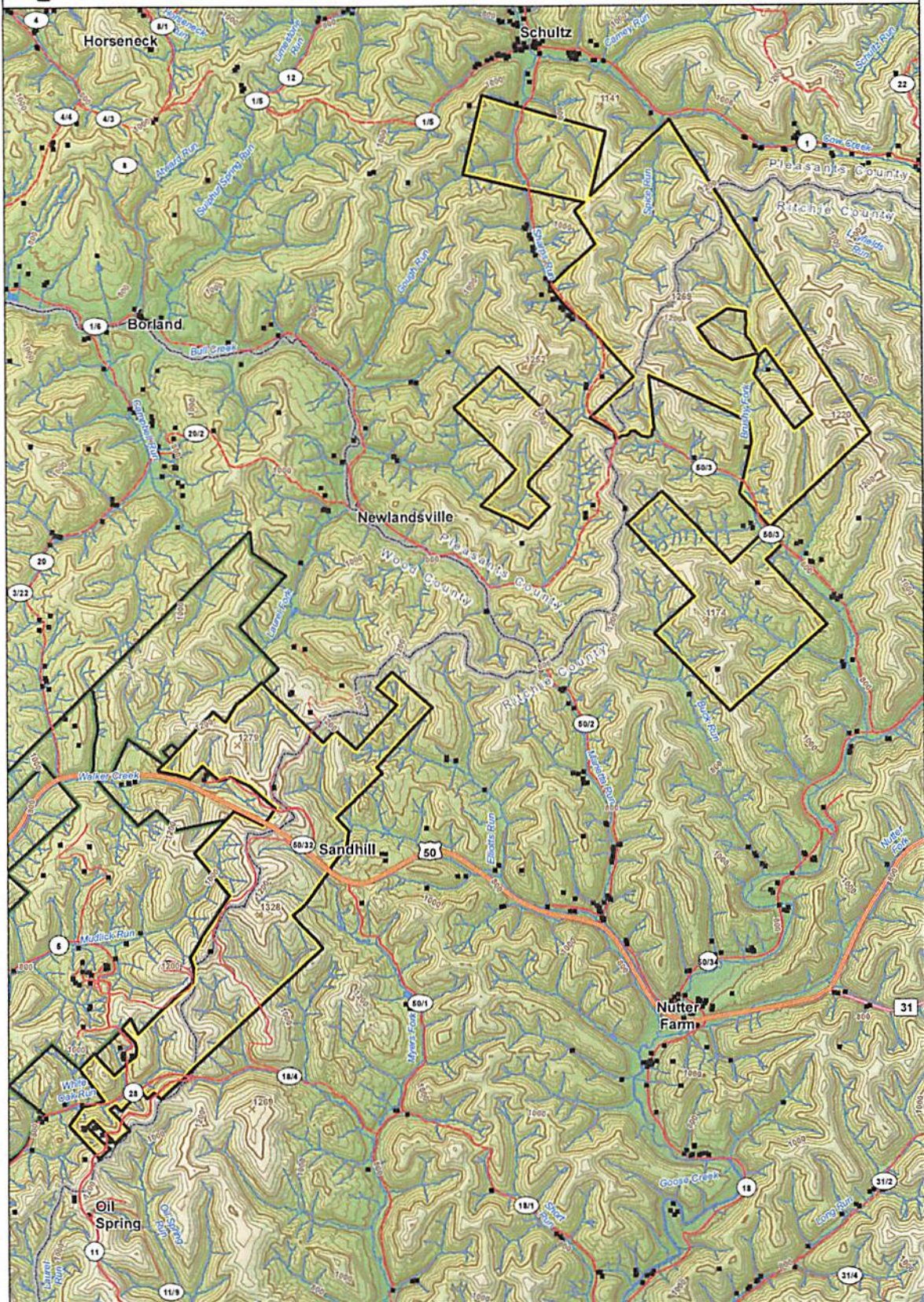
0 0.5 1 1.5 2 Miles  
1:32,000



Contour Interval 40 Feet  
Bold Line at Even 200 Feet  
Boundaries are Approximate



Prepared by  
WV Division of Natural Resources,  
Wildlife Resources Section, GIS  
Elkins, WV 25841  
December 13, 2018





# **Little Kanawha RC&D**

1014 Volcano Road, Waverly, WV 26184 - 304-679-3639

Project Sharing Warehouse - 304-893-9723

Email: [info@lkrcd.com](mailto:info@lkrcd.com) or Coordinator D. J. Allen: [dj.allen@lkrcd.com](mailto:dj.allen@lkrcd.com)

## **Mini Grant Program**

- 15 projects were funded through the 2018 Little Kanawha RC&D Mini Grant program. Projects included:
  - Mountwood Adventure Camp
  - Soil and Forage Analysis - LKCD
  - RC&D Land and Water
  - Project Sharing Community Gardens
  - Pollinators for Project Sharing Grounds
  - Camp Sheppard Pumpkin Patch
  - North Bend Rail Trail Slip Repairs
  - Calhoun Co. Park Trail Repair
  - Grounds Control – East Wetzel Trail
  - Spencer Elementary Erosion Control
  - White Oak Village Parking Lot Drainage
  - Mountwood Park Culvert Removal
  - Education Wetland Improvement
  - Roane Solid Waste Recycling Road Improvements
  - Community Gardens: New Martinsville & Paden City
- The 2019 Mini Grant application period is now open for those in our 9-county area who have projects that qualify for these funds. This funding in our service area is vital as organizations and communities continue to work towards improving and enhancing areas of our state.

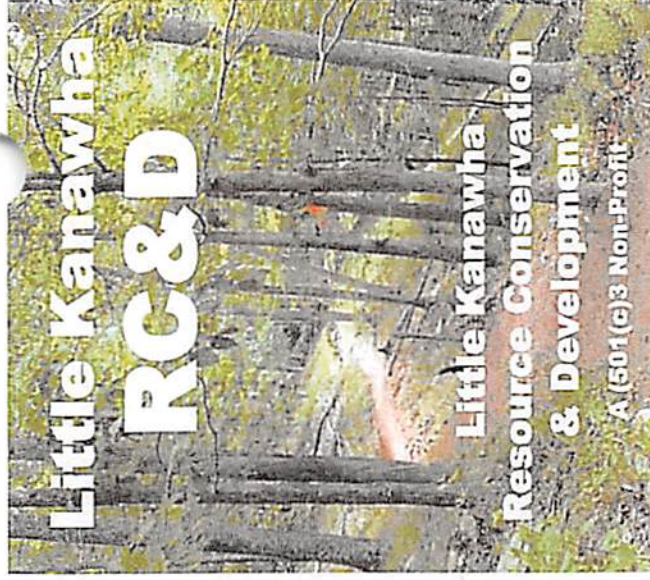
## **Garden Program**

- The 2018 Garden Program gave us insights into what we needed to change or improve for our upcoming 2019 Garden Program. With garden equipment, a new work area and table, we look forward to Spring and the opportunities that are available for those taking advantage of the program. This program grows each year and we are hoping to reach more veterans and others who will use this easily accessible area right in Parkersburg to grow fresh foods for personal use or to share with others or organizations who assist those in need.

## **Project Sharing**

- Another important project of the LKRC&D is Project Sharing, which helps provide a full range of items to non-profits in our counties as they work to assist the underserved and improve their own headquarter to better serve others.





## Working Together to Make Things Happen

RC&D provides a way for people to work together to plan and implement activities that will make their communities better places to work and live. Local people are best able to determine needs and create solutions for their communities. The strength of the RC&D lies in the commitment of local people and their dedication to solving local problems.



**Right:** Students at the Gilmore Elementary's NatureFit Program at the Gilmore Elementary School Trail in Jackson County.

**Below:** Raised Bed gardening at the Community Garden projects in New Martinsville, Wetzel County.



## Little Kanawha RC&D council consists of:

- ◆ One County Commissioner,
- ◆ One Conservation District Representative
- ◆ One at-large member

*from each county in our service area of*

Calhoun, Jackson, Pleasants, Ritchie, Roane, Tyler, Wetzel, Wirt & Wood

### Little Kanawha RC&D:

- \* Established in 1966
- \* 1st RC&D in WV
- \* 13th RC&D in the nation
- \* Serving our communities and rural areas in WV

LK RC&D has collaborated on projects of all proportions, from dam construction projects to the smallest community projects. Since 2006, almost \$232,000 has been awarded for projects, and nearly 600 grants have been awarded since the RC&D was established.

**RC&D: a unique program that helps people care for and protect our natural resources in ways that improve our economy, environment & living standards.**

- Helping conserve our natural resources
- Teaching others to be better stewards of the lands and resources around us
- Empowering better agricultural practices to make our communities stronger and better places in which to live and work
- Working together with a diverse group of people and organizations
- Enhancing the local economy
- Assisting charities as they assist the underserved in our 9-county service area

1014 Volcano Road, Waverly, WV 26184

**304-679-3639**

Email: [info@lkrcd.com](mailto:info@lkrcd.com)



# Project Sharing

A PROGRAM OF THE LITTLE KANAWHA RC&D

**Project Sharing: for eligible non-profits to assist in caring for the underprivileged in our 9-county service area.**

This program can provide much needed household and building supplies, educational materials and books, personal care items, doors, windows, bathtubs, clothing, school supplies, some food items and much more.

Project Sharing came into being when non-profits described to us their need to find additional sources of products to distribute to the underprivileged.

## Project Sharing

2309 Gihon Road  
Parkersburg, WV 26101

**304-893-9723**

Open Wednesdays, 9 - 2

**Project Sharing**  
*helps fill many needs by providing to organizations that provide to others.*



## Mini Grant Program

The Little Kanawha RC&D Mini Grant Program awards grant funds to organizations and communities in our service area. These funds may be used for projects that improve or enhance our land and water resources. If you have a project that will improve your area, contact our office for more information. The grant application period runs from mid-December through mid-March.

**Little Kanawha RC&D**

Email: [info@lkrcd.com](mailto:info@lkrcd.com) or [dj.allen@lkrcd.com](mailto:dj.allen@lkrcd.com)

**304-679-3639** (limited office hours)

## SERVICE AREAS

Wood, Wirt, Wetzel, Tyler, Roane, Ritchie, Pleasants, Jackson & Calhoun Counties in WV.

## We Appreciate Our Partners...

Little Kanawha RC&D works with many partners and associates in our 9-county service area, some of which include:

- **County Commission:**  
Wood, Wirt, Wetzel, Tyler, Roane, Ritchie, Pleasants, Jackson, Calhoun
- **Conservation Districts:**  
Little Kanawha, Upper Ohio and Western Conservation Districts
- WV Department of Agriculture
- West Virginia Conservation Agency
- Natural Resources Conservation Service
- National Council on Aging
- Mountwood Park
- Christian Appalachian Project
- Good360
- WV RC&D Association
- Mid-Atlantic RC&D
- National Association of RC&D Councils
- Schools, churches, scouts, and many other 501(c)3 non-profit organizations

## Little Kanawha RC&D

### Mission Statement:

"Assist local communities to manage their natural resources in ways that improve the area's economy and environment."

### Project Sharing Mission Statement:

"Working together with organizations that serve the underserved to improve the quality of life in our 9-county project area."

*This helps us accomplish the*

*RC&D Vision of 'Leading our communities through partnerships to make things happen.'*



In this packet you will find:

**Financial & Agreement Information**

Pages 1-2	District Trial Balance Sheet
Page 3	District Account Receivables
Pages 4-8	District Check Detail
Pages 9-12	District Profit & Loss
Pages 13-14	Co-Administered Funds Balances
Pages 15-17	Co-Administered Checks

**Non Action Items**

None

**Action Items**

Pages 18-21	Jr Master Gardner Instructor Training Information/Request
Pages 22-23	Winter Educational Meeting Support Request
Page 24	National Watershed Coalition Membership Application

**Items late or later in the agenda**

Page 25	LKCD District Staff Report
Page 26	Forestry Report
Page 27	WVCA Field Staff Report
Pages 28-33	FSA Newsletters
Page 34	Letter from Tiffany Bennett
Pages 35-37	Outreach Materials Information
Pages 37A-39	Appalachian Grazing Conference Information & Request
Page 40	Draft Board Meeting Dates
Pages 41-46	Envirothon Committee Information
Pages 47-59	WVACD Meeting Information & Prior Minutes
Pages 60-69	AgEP Information & Reports
Pages 70-71	AEP Report
Pages 72-165	NFHR Mussel Monitoring Report



11:44 AM

01/09/19

Accrual Basis

## Little Kanawha Conserveation District

## Trial Balance

As of December 31, 2018

	Dec 31, 18	
	Debit	Credit
CDO Fundes United 0704	66,586.25	
General Fund Checking Peoples	0.00	
General Fund Peoples Bank CD	0.00	
LKCD Account United 1779	57,752.86	
LKCD Projects United 1752	188,642.01	
LKCD Projects United 1752:2nd CD - Part of checking ...	41,532.43	
LKCD Projects United 1752:CD - Part of checking 1752	0.00	
Set-up account - Do-Not Use	0.00	
Accounts Receivable	3,775.06	
Due From Receiving Account	0.00	
Undeposited Funds		37.00
Video Equipment	1,790.79	
Fixed Assets	94,981.02	
Furniture and Equipment	17,800.00	
Accumulated Depreciation		74,587.18
Fed W/H Tax	120.29	
Prepayment Liability	45.00	
Accounts Payable		1,138.64
Pass Through Money from State		342,854.00
Payroll Liabilities		9,745.77
WV Income Tax W/H	1,523.96	
Fund Balance		137,122.96
Unrestricted Net Assets	110,181.71	
Equipment Rental Income		315.00
Equipment Rental Income:2 Ton Lime Spreader #11		250.00
Equipment Rental Income:2 Ton Lime Spreader #7		350.00
Equipment Rental Income:2 Ton Lime Spreader #5		100.00
Equipment Rental Income:4 Ton Lime Spreader #4		140.00
Equipment Rental Income:2 Ton Lime Spreader #2		200.00
Equipment Rental Income:No Till Drill #1		1,871.00
Equipment Rental Income:Weed Wiper #9	26.00	
Equipment Rental Income:2 Ton Lime Spreader #6		250.00
Equipment Rental Income:No Till Drill #8		1,837.50
Equipment Rental Income:Weed Wiper #3		250.00
Interest Revenue		544.04
Interfund Transfer		60,979.47
Investments:Interest-Savings, Short-term CD		104.48
Sales Income		2,714.00
Sales Revenue		3,948.96
Services/Work Crew Revenue		75.00
Equipment Expenses:4 Ton Lime Spreader #4	336.17	
Equipment Expenses:2 Ton Lime Spreader #7	296.00	
Equipment Expenses:No Till Drill #8	65.50	
Equipment Expenses:Weed Wiper #3	1,590.50	
Equipment Expenses:2 Ton Lime Spreader #2	1,356.83	
Equipment Expenses:No Till Drill #1	0.79	
Cost of Goods Sold	5,827.86	
Supervisor Expense:Income to Offset Supervisor Exp	0.00	
Supervisor Expense:Travel, Mileage, Meal Reimburse	7,005.52	
Supervisor Expense:Per Diem Pay	8,870.00	
Advertising/Marketing	533.69	
Bank Fees	20.00	
Facilities and Equipment:Rent, Parking, Utilities	2,410.00	
Forage Testing	119.70	
Maintenance & Repairs	372.85	
Meals & Entertainment	830.08	
Operations:Books, Subscriptions, Reference	5,368.37	
Operations:Postage, Mailing Service	143.55	
Operations:Supplies	1,265.72	
Operations:Telephone, Telecommunications	777.63	
Other Types of Expenses:Insurance - Liability, D and O	1,522.00	
Payroll - Salaries	11,448.00	
Payroll - State Unemployment	287.51	
Payroll - Taxes	1,607.54	

11:44 AM

01/09/19

Accrual Basis

**Little Kanawha Conserveation District**

**Trial Balance**

**As of December 31, 2018**

	Dec 31, 18	
	Debit	Credit
Payroll - Workers Compensation	210.00	
Sponsorship Expense	1,250.00	
Supplies - Events	101.16	
Supplies - Office	392.23	
Travel and Meetings:Travel	648.42	
TOTAL	<u>639,415.00</u>	<u>639,415.00</u>

Little Kanawha Conserveation District  
A/R Aging Summary  
As of January 9, 2019

8:34 AM  
01/09/2019

	<u>Current</u>	<u>1 - 30</u>	<u>31 - 60</u>	<u>61 - 90</u>	<u>&gt; 90</u>	<u>TOTAL</u>
Angela Campbell	0.00	0.00	0.00	0.00	300.00	300.00
<del>Dan Hickman</del>	<del>0.00</del>	<del>0.00</del>	<del>0.00</del>	<del>35.00</del>	<del>0.00</del>	<del>35.00</del>
Daniel McKown	0.00	0.00	0.00	0.00	48.00	48.00
Daniel R. & Gloria J. Hickman	0.00	105.00	0.00	0.00	0.00	105.00
Dwayne Duffield	0.00	0.00	20.00	0.00	0.00	20.00
George Harper	0.00	0.00	0.00	0.00	58.00	58.00
Joshua Radabaugh	0.00	0.00	0.00	0.00	150.00	150.00
Mike Miller	0.00	0.00	0.00	34.00	0.00	34.00
Thomas Life	0.00	0.00	0.00	0.00	360.00	360.00
Todd Shockey	0.00	0.00	0.00	132.00	0.00	132.00
Tyler Millers	0.00	0.00	0.00	0.00	50.00	50.00
<b>TOTAL</b>	<u><u>0.00</u></u>	<u><u>105.00</u></u>	<u><u>20.00</u></u>	<u><u>201.00</u></u>	<u><u>966.00</u></u>	<u><u>1,292.00</u></u>

*paid 11-9-18*

3

11:43 AM

01/09/19

# Little Kanawha Conserveation District Check Detail December 2018

Type	Num	Date	Name	Item	Account	Paid Amount	Original Amount
Check		12/17/2018	Cash		LKCD Account ...		-329.04
				Supplies		-329.04	329.04
TOTAL						-329.04	329.04
Check		12/18/2018	Cash		LKCD Account ...		-20.00
				Bank Fees		-20.00	20.00
TOTAL						-20.00	20.00
Check		12/31/2018			LKCD Account ...		-3.24
				Fed W/H Tax		-3.24	3.24
TOTAL						-3.24	3.24
Bill Pmt -Check	2641	12/06/2018	Skyview Laborat...		LKCD Account ...		-119.70
Bill		11/30/2018		Forage Testing		-119.70	119.70
TOTAL						-119.70	119.70
Bill Pmt -Check	2642	12/06/2018	United Bankcard...		LKCD Account ...		0.00
TOTAL						0.00	0.00
Paycheck	2643	12/06/2018	MIKAYLA D HAY...		LKCD Account ...		-635.78
				Payroll - Salaries		-774.00	774.00
				Payroll Liabilities		49.00	-49.00
				Payroll - Taxes		-47.99	47.99
				Payroll Liabilities		47.99	-47.99
				Payroll Liabilities		47.99	-47.99
				Payroll - Taxes		-11.23	11.23
				Payroll Liabilities		11.23	-11.23
				Payroll Liabilities		11.23	-11.23
				Payroll Liabilities		30.00	-30.00
TOTAL						-635.78	635.78
Liability Check	2644	12/12/2018	West Virginia St...		LKCD Account ...		-169.00
				Payroll Liabilities		-169.00	169.00
TOTAL						-169.00	169.00
Paycheck	2645	12/13/2018	DEXTER F GRA...		LKCD Account ...		-64.65
				Per Diem Pay		-70.00	70.00
				Payroll - Taxes		-4.34	4.34
				Payroll Liabilities		4.34	-4.34
				Payroll Liabilities		4.34	-4.34
				Payroll - Taxes		-1.01	1.01
				Payroll Liabilities		1.01	-1.01
				Payroll Liabilities		1.01	-1.01
				Payroll - Taxes		-0.42	0.42
				Payroll Liabilities		0.42	-0.42



11:43 AM

01/09/19

# Little Kanawha Consevation District

## Check Detail

### December 2018

Type	Num	Date	Name	Item	Account	Paid Amount	Original Amount
					Payroll - State Un...	-2.03	2.03
					Payroll Liabilities	2.03	-2.03
TOTAL						-64.65	64.65
Paycheck	2646	12/13/2018	K. ROBERT BUC...		LKCD Account ...		-210.41
					Per Diem Pay	-230.00	230.00
					Payroll - Taxes	-14.26	14.26
					Payroll Liabilities	14.26	-14.26
					Payroll Liabilities	14.26	-14.26
					Payroll - Taxes	-3.33	3.33
					Payroll Liabilities	3.33	-3.33
					Payroll Liabilities	3.33	-3.33
					Payroll - Taxes	-1.38	1.38
					Payroll Liabilities	1.38	-1.38
					Payroll Liabilities	2.00	-2.00
					Payroll - State Un...	-6.67	6.67
					Payroll Liabilities	6.67	-6.67
TOTAL						-210.41	210.41
Paycheck	2647	12/13/2018	MICHAEL D NIC...		LKCD Account ...		-237.11
					Per Diem Pay	-260.00	260.00
					Payroll - Taxes	-16.12	16.12
					Payroll Liabilities	16.12	-16.12
					Payroll Liabilities	16.12	-16.12
					Payroll - Taxes	-3.77	3.77
					Payroll Liabilities	3.77	-3.77
					Payroll Liabilities	3.77	-3.77
					Payroll - Taxes	-1.56	1.56
					Payroll Liabilities	1.56	-1.56
					Payroll Liabilities	3.00	-3.00
					Payroll - State Un...	-7.54	7.54
					Payroll Liabilities	7.54	-7.54
TOTAL						-237.11	237.11
Paycheck	2648	12/13/2018	ROGER L SHAV...		LKCD Account ...		-268.05
					Per Diem Pay	-300.00	300.00
					Payroll - Taxes	-18.60	18.60
					Payroll Liabilities	18.60	-18.60
					Payroll Liabilities	18.60	-18.60
					Payroll - Taxes	-4.35	4.35
					Payroll Liabilities	4.35	-4.35
					Payroll Liabilities	4.35	-4.35
					Payroll - Taxes	-1.80	1.80
					Payroll Liabilities	1.80	-1.80
					Payroll Liabilities	9.00	-9.00
					Payroll - State Un...	-8.70	8.70
					Payroll Liabilities	8.70	-8.70
TOTAL						-268.05	268.05

11:43 AM

01/09/19

# Little Kanawha Consevation District Check Detail December 2018

Type	Num	Date	Name	Item	Account	Paid Amount	Original Amount
Paycheck	2649	12/13/2018	ROSEANN ADA...		LKCD Account ...		-703.80
				Per Diem Pay		-800.00	800.00
				Payroll Liabilities		15.00	-15.00
				Payroll - Taxes		-49.60	49.60
				Payroll Liabilities		49.60	-49.60
				Payroll Liabilities		49.60	-49.60
				Payroll - Taxes		-11.60	11.60
				Payroll Liabilities		11.60	-11.60
				Payroll Liabilities		11.60	-11.60
				Payroll - Taxes		-4.80	4.80
				Payroll Liabilities		4.80	-4.80
				Payroll Liabilities		20.00	-20.00
				Payroll - State Un...		-23.20	23.20
				Payroll Liabilities		23.20	-23.20
TOTAL						-703.80	703.80
Paycheck	2650	12/13/2018	THANH H ASHM...		LKCD Account ...		-300.99
				Per Diem Pay		-340.00	340.00
				Payroll Liabilities		3.00	-3.00
				Payroll - Taxes		-21.08	21.08
				Payroll Liabilities		21.08	-21.08
				Payroll Liabilities		21.08	-21.08
				Payroll - Taxes		-4.93	4.93
				Payroll Liabilities		4.93	-4.93
				Payroll Liabilities		4.93	-4.93
				Payroll - Taxes		-2.04	2.04
				Payroll Liabilities		2.04	-2.04
				Payroll Liabilities		10.00	-10.00
				Payroll - State Un...		-9.86	9.86
				Payroll Liabilities		9.86	-9.86
TOTAL						-300.99	300.99
Bill Pmt -Check	2651	12/14/2018	Quill.com		LKCD Account ...		-47.55
Bill	3031...	11/28/2018			Supplies - Office	-47.55	47.55
TOTAL						-47.55	47.55
Bill Pmt -Check	2652	12/14/2018	Runyon Lock Se...		LKCD Account ...		-89.88
Bill		11/26/2018			Maintenance & R...	-89.88	89.88
TOTAL						-89.88	89.88
Bill Pmt -Check	2653	12/14/2018	United Bankcard...		LKCD Account ...		-32.15
Bill		11/27/2018			Postage, Mailing ...	-14.20	14.20
					Books, Subscripti...	-17.95	17.95
TOTAL						-32.15	32.15

11:43 AM

01/09/19

# Little Kanawha Conserveation District

## Check Detail

### December 2018

Type	Num	Date	Name	Item	Account	Paid Amount	Original Amount
Bill Pmt -Check	2654	12/19/2018	J S C Enterprises		LKCD Account ...		-1,503.50
Bill		09/12/2018		Weed Wiper #9		-276.00	276.00
Bill		09/12/2018		No Till Drill #8		-65.50	65.50
Bill		09/12/2018		2 Ton Lime Spre...		-296.00	296.00
Bill		11/11/2018		2 Ton Lime Spre...		-791.00	791.00
Bill		12/12/2018		Supplies		-75.00	75.00
TOTAL						-1,503.50	1,503.50
Bill Pmt -Check	2655	12/19/2018	Mikayla Hayes		LKCD Account ...		-146.59
Bill		12/20/2018		Travel		-146.59	146.59
TOTAL						-146.59	146.59
Paycheck	2656	12/20/2018	MIKAYLA D HAY...		LKCD Account ...		-726.61
				Payroll - Salaries		-894.00	894.00
				Payroll Liabilities		64.00	-64.00
				Payroll - Taxes		-55.43	55.43
				Payroll Liabilities		55.43	-55.43
				Payroll Liabilities		55.43	-55.43
				Payroll - Taxes		-12.96	12.96
				Payroll Liabilities		12.96	-12.96
				Payroll Liabilities		12.96	-12.96
				Payroll Liabilities		35.00	-35.00
TOTAL						-726.61	726.61
Bill Pmt -Check	2740	12/12/2018	Bob Buchanan		LKCD Account ...		-62.55
Bill		11/30/2018		Travel, Mileage, ...		-62.55	62.55
TOTAL						-62.55	62.55
Bill Pmt -Check	2741	12/12/2018	Mike Nichols		LKCD Account ...		-198.08
Bill		11/30/2018		Travel, Mileage, ...		-198.08	198.08
TOTAL						-198.08	198.08
Bill Pmt -Check	2742	12/12/2018	Roger Shaver.		LKCD Account ...		-259.21
Bill		11/30/2018		Travel, Mileage, ...		-259.21	259.21
TOTAL						-259.21	259.21
Bill Pmt -Check	2743	12/12/2018	Dexter Graham.		LKCD Account ...		-40.66
Bill		11/30/2018		Travel, Mileage, ...		-40.66	40.66
TOTAL						-40.66	40.66
Bill Pmt -Check	2744	12/12/2018	Thanh Ashman		LKCD Account ...		-542.31
Bill		11/30/2018		Travel, Mileage, ...		-542.31	542.31
TOTAL						-542.31	542.31

11:43 AM

01/09/19

**Little Kanawha Consevation District**  
**Check Detail**  
**December 2018**

Type	Num	Date	Name	Item	Account	Paid Amount	Original Amount
Bill Pmt -Check	2745	12/12/2018	Rose Adams		LKCD Account ...		-676.34
Bill		11/30/2018			Travel, Mileage, ...	-676.34	676.34
TOTAL						-676.34	676.34





11:44 AM

01/09/19

Accrual Basis

# Little Kanawha Conserveation District

## Profit & Loss

July 2018 through June 2019

	Jul '18 - Jun 19
<b>Ordinary Income/Expense</b>	
<b>Income</b>	
Equipment Rental Income	
2 Ton Lime Spreader #11	250.00
2 Ton Lime Spreader #7	350.00
2 Ton Lime Spreader #5	100.00
4 Ton Lime Spreader #4	140.00
2 Ton Lime Spreader #2	200.00
No Till Drill #1	1,871.00
Weed Wiper #9	-26.00
2 Ton Lime Spreader #6	250.00
No Till Drill #8	1,837.50
Weed Wiper #3	250.00
Equipment Rental Income - Ot...	340.00
<b>Total Equipment Rental Income</b>	<b>5,562.50</b>
Interest Revenue	544.04
Interfund Transfer	60,979.47
Investments	
Interest-Savings, Short-term CD	104.48
<b>Total Investments</b>	<b>104.48</b>
Sales Income	2,885.33
Sales Revenue	3,998.96
Services/Work Crew Revenue	85.00
<b>Total Income</b>	<b>74,159.78</b>
<b>Cost of Goods Sold</b>	
Equipment Expenses	
4 Ton Lime Spreader #4	336.17
2 Ton Lime Spreader #7	296.00
No Till Drill #8	65.50
Weed Wiper #3	1,590.50
2 Ton Lime Spreader #2	1,356.83
No Till Drill #1	0.79
<b>Total Equipment Expenses</b>	<b>3,645.79</b>
<b>Cost of Goods Sold</b>	<b>5,827.86</b>
<b>Total COGS</b>	<b>9,473.65</b>
<b>Gross Profit</b>	<b>64,686.13</b>
<b>Expense</b>	
Supervisor Expense	
Income to Offset Supervisor E...	0.00
Travel, Mileage, Meal Reimbur...	7,005.52
Per Diem Pay	8,870.00
<b>Total Supervisor Expense</b>	<b>15,875.52</b>
Advertising/Marketing	533.69
Bank Fees	20.00
Facilities and Equipment	
Rent, Parking, Utilities	4,720.00
<b>Total Facilities and Equipment</b>	<b>4,720.00</b>
Forage Testing	119.70
Maintenance & Repairs	372.85
Meals & Entertainment	830.08

11:44 AM

01/09/19

Accrual Basis

**Little Kanawha Conserveation District**  
**Profit & Loss**  
**July 2018 through June 2019**

	<u>Jul '18 - Jun 19</u>
<b>Operations</b>	
Books, Subscriptions, Refere...	5,368.37
Postage, Mailing Service	143.55
Supplies	1,265.72
Telephone, Telecommunicatio...	777.63
<b>Total Operations</b>	<u>7,555.27</u>
<b>Other Types of Expenses</b>	
Insurance - Liability, D and O	1,522.00
<b>Total Other Types of Expenses</b>	<u>1,522.00</u>
<b>Payroll - Salaries</b>	12,120.00
<b>Payroll - State Unemployment</b>	308.34
<b>Payroll - Taxes</b>	1,662.97
<b>Payroll - Workers Compensation</b>	210.00
<b>Sponsorship Expense</b>	1,250.00
<b>Supplies - Events</b>	101.16
<b>Supplies - Office</b>	441.01
<b>Travel and Meetings</b>	
Travel	648.42
<b>Total Travel and Meetings</b>	<u>648.42</u>
<b>Total Expense</b>	<u>48,291.01</u>
<b>Net Ordinary Income</b>	<u>16,395.12</u>
<b>Net Income</b>	<u><u>16,395.12</u></u>

2:08 PM

01/09/19

Accrual Basis

# Little Kanawha Conservation District Profit & Loss by Class July 1, 2018 through January 9, 2019

Ordinary Income/Expense	CDO Grant	General	LKCD 1779	LKCD Project	Unclassified	TOTAL
<b>Income</b>						
Equipment Rental Income						
2 Ton Lime Spreader #11	0.00	0.00	250.00	0.00	0.00	250.00
2 Ton Lime Spreader #7	0.00	0.00	350.00	0.00	0.00	350.00
2 Ton Lime Spreader #5	0.00	0.00	100.00	0.00	0.00	100.00
4 Ton Lime Spreader #4	0.00	0.00	140.00	0.00	0.00	140.00
2 Ton Lime Spreader #2	0.00	0.00	200.00	0.00	0.00	200.00
No Till Drill #1	0.00	0.00	1,871.00	0.00	0.00	1,871.00
Weed Wiper #9	0.00	0.00	-26.00	0.00	0.00	-26.00
2 Ton Lime Spreader #6	0.00	0.00	250.00	0.00	0.00	250.00
No Till Drill #8	0.00	0.00	1,837.50	0.00	0.00	1,837.50
Weed Wiper #3	0.00	0.00	250.00	0.00	0.00	250.00
Equipment Rental Income - Ot...	0.00	0.00	340.00	0.00	0.00	340.00
<b>Total Equipment Rental Income</b>	0.00	0.00	5,562.50	0.00	0.00	5,562.50
Interest Revenue	0.00	21.98	47.23	474.83	0.00	544.04
Interfund Transfer	-12,674.86	0.00	73,654.33	0.00	0.00	60,979.47
Investments						
Interest-Savings, Short-term CD	0.00	0.00	0.00	0.00	104.48	104.48
<b>Total Investments</b>	0.00	0.00	0.00	0.00	104.48	104.48
Sales Income	0.00	0.00	2,885.33	0.00	0.00	2,885.33
Sales Revenue	0.00	0.00	3,998.96	0.00	0.00	3,998.96
Services/Work Crew Revenue	0.00	0.00	85.00	0.00	0.00	85.00
<b>Total Income</b>	-12,674.86	21.98	86,233.35	474.83	104.48	74,159.78
<b>Cost of Goods Sold</b>						
Equipment Expenses						
4 Ton Lime Spreader #4	0.00	0.00	336.17	0.00	0.00	336.17
2 Ton Lime Spreader #7	0.00	0.00	296.00	0.00	0.00	296.00
No Till Drill #8	0.00	0.00	65.50	0.00	0.00	65.50
Weed Wiper #3	0.00	0.00	1,590.50	0.00	0.00	1,590.50
2 Ton Lime Spreader #2	0.00	0.00	1,356.83	0.00	0.00	1,356.83
No Till Drill #1	0.00	0.00	0.79	0.00	0.00	0.79
<b>Total Equipment Expenses</b>	0.00	0.00	3,645.79	0.00	0.00	3,645.79
Cost of Goods Sold	0.00	0.00	5,827.86	0.00	0.00	5,827.86
<b>Total COGS</b>	0.00	0.00	9,473.65	0.00	0.00	9,473.65
<b>Gross Profit</b>	-12,674.86	21.98	76,759.70	474.83	104.48	64,686.13

# Little Kanawha Conservation District Profit & Loss by Class July 1, 2018 through January 9, 2019

Expense	CDO Grant	General	LKCD 1779	LKCD Project	Unclassified	TOTAL
Supervisor Expense						
Income to Offset Supervisor ...	0.00	0.00	0.00	0.00	0.00	0.00
Travel, Mileage, Meal Reimbu...	0.00	0.00	7,005.52	0.00	0.00	7,005.52
Per Diem Pay	0.00	0.00	8,870.00	0.00	0.00	8,870.00
Total Supervisor Expense	0.00	0.00	15,875.52	0.00	0.00	15,875.52
Advertising/Marketing	118.08	0.00	415.61	0.00	0.00	533.69
Bank Fees	0.00	0.00	0.00	0.00	20.00	20.00
Facilities and Equipment						
Rent, Parking, Utilities	100.00	0.00	2,695.00	0.00	0.00	2,795.00
Total Facilities and Equipment	100.00	0.00	2,695.00	0.00	0.00	2,795.00
Forage Testing	0.00	0.00	119.70	0.00	0.00	119.70
Maintenance & Repairs	0.00	0.00	372.85	0.00	0.00	372.85
Meals & Entertainment	0.00	0.00	830.08	0.00	0.00	830.08
Operations						
Books, Subscriptions, Refere...	0.00	0.00	5,368.37	0.00	0.00	5,368.37
Postage, Mailing Service	0.00	0.00	143.55	0.00	0.00	143.55
Supplies	0.00	0.00	936.68	0.00	329.04	1,265.72
Telephone, Telecommunicati...	0.00	0.00	777.63	0.00	0.00	777.63
Total Operations	0.00	0.00	7,226.23	0.00	329.04	7,555.27
Other Types of Expenses						
Insurance - Liability, D and O	0.00	0.00	1,522.00	0.00	0.00	1,522.00
Total Other Types of Expenses	0.00	0.00	1,522.00	0.00	0.00	1,522.00
Payroll - Salaries	0.00	0.00	12,120.00	0.00	0.00	12,120.00
Payroll - State Unemployment	0.00	0.00	308.34	0.00	0.00	308.34
Payroll - Taxes	0.00	0.00	1,662.97	0.00	0.00	1,662.97
Payroll - Workers Compensation	0.00	0.00	210.00	0.00	0.00	210.00
Sponsorship Expense	1,000.00	0.00	250.00	0.00	0.00	1,250.00
Supplies - Events	101.16	0.00	0.00	0.00	0.00	101.16
Supplies - Office	0.00	0.00	441.01	0.00	0.00	441.01
Travel and Meetings						
Travel	0.00	0.00	648.42	0.00	0.00	648.42
Total Travel and Meetings	0.00	0.00	648.42	0.00	0.00	648.42
Total Expense	1,319.24	0.00	44,697.73	0.00	349.04	46,366.01
Net Ordinary Income	-13,994.10	21.98	32,061.97	474.83	-244.56	18,320.12
Net Income	-13,994.10	21.98	32,061.97	474.83	-244.56	18,320.12

**Little Kanawha Conservation District**  
Normal Trial Balance - Co-Administered Funds  
From 12/31/2018 Through 12/31/2018

Account Code	Account Title	Debit Balance	Credit Balance
1007-00	Operation Maintenance and Repair (OM&R)		
13001-LK	North Fork Hughes River OM&R	116,645.54	
13002-LK	Bonds Creek Channel OM&R	1,584.94	
13003-LK	Bonds Creek Structure OM&R	9,802.25	
13004-LK	Pocatalico Site #14 OM&R	8,735.36	
13005-LK	Pond Run - Lower Channel OM&R	118,236.62	
13006-LK	Pullman Creek OM&R	500.43	
13007-LK	Walker Creek OM&R	2,015.74	
13008-LK	Pond Run - Dam & Upper Channel OMR	203,443.65	
Total 1007-00	Operation Maintenance and Repair (OM&R)	460,964.53	0.00
1010-00	State Emergency Watershed Protection (EWP) Quick Response		
10005-LK	State EWP Quick Response	34,673.60	
Total 1010-00	State Emergency Watershed Protection (EWP) Quick Response	34,673.60	0.00
1011-00	Stream Protection and Restoration Program (SPRP)		
16000-LK	SPRP Restricted	56,469.83	
Total 1011-00	Stream Protection and Restoration Program (SPRP)	56,469.83	0.00
1014-00	Conservation Reserve Enhancement Program (CREP)		
10006-LK	CREP	3,130.73	
Total 1014-00	Conservation Reserve Enhancement Program (CREP)	3,130.73	0.00
1015-00	Ag-Enhancement		
10016-LK	Ag-Enhancement	71,793.05	
23002-LK	LKCD AgEP	12,004.49	
Total 1015-00	Ag-Enhancement	83,797.54	0.00
1026-00	Operation Maintenance and Repair (OM&R) State Supplemental		
29000-LK	OM&R State Supplemental Restricted	80,297.88	
Total 1026-00	Operation Maintenance and Repair (OM&R) State Supplemental	80,297.88	0.00
9998-00	Bank Services		
99998-LK	Bank Services	1.00	
Total 9998-00	Bank Services	1.00	0.00
Report Total		719,335.11	0.00

**Little Kanawha Conservation District**  
Normal Trial Balance - Co-Administered Funds  
From 12/31/2018 Through 12/31/2018

<u>Account Code</u>	<u>Account Title</u>	<u>Debit Balance</u>	<u>Credit Balance</u>
Report Difference		719,335.11	
		<u><u>719,335.11</u></u>	

**Little Kanawha Conservation District**  
Check/Voucher Register - Check List  
10019 - Receiving Acct Peoples 2202  
From 12/1/2018 Through 12/31/2018

<u>Check Number</u>	<u>Check Description</u>	<u>Vendor Name</u>	<u>Effective Date</u>	<u>Check Amount</u>
208	System Generated Check/Vo...	LKCD CDO Funds	12/12/2018	112.47
209	System Generated Check/Vo...	LKCD Interest Acc...	12/12/2018	6,185.00
210	System Generated Check/Vo...	LKCD Interest Acc...	12/14/2018	1,000.00



**Little Kanawha Conservation District**  
Check/Voucher Register - Check List  
10020 - Interest Bearing Acct Peoples 2180  
From 12/1/2018 Through 12/31/2018

<u>Check Number</u>	<u>Check Description</u>	<u>Vendor Name</u>	<u>Effective Date</u>	<u>Check Amount</u>
2341	System Generated Check/Vo...	Larry Eugene Gre...	12/19/2018	1,147.68
2342	System Generated Check/Vo...	Troxal Metheney	12/19/2018	2,000.00

**Little Kanawha Conservation District**  
Check/Voucher Register - Check List  
10025 - North Fork Hughes River Money Market United 7280  
From 12/1/2018 Through 12/31/2018

<u>Check Number</u>	<u>Check Description</u>	<u>Vendor Name</u>	<u>Effective Date</u>	<u>Check Amount</u>
1006	System Generated Check/Vo...	Tygarts Valley Co...	12/12/2018	78,000.00
1007	System Generated Check/Vo...	LKCD Interest Acc...	12/14/2018	8,200.00
Report Total				96,645.15

**Nichols, Jessica**

---

**From:** Brandy Brabham <Brandy.Brabham@mail.wvu.edu>  
**Sent:** Friday, January 4, 2019 2:36 PM  
**To:** Nichols, Jessica  
**Cc:** Figgatt, Aimee; Sam Sheets; Thanh Ashman  
**Subject:** FW: WVACD Funded FIRST Robotics and Jr. Master Gardener Training Workshops  
**Attachments:** Application for attendance STEM Workshop Putnam.pdf; STEM-Based Conservation Curriculum Training Poster.pdf

Jessica,

Can you please add "Junior Master Gardening Instructor Training" on your agenda for the upcoming LKCD meeting on Jan. 10?

I would like to co-host a day-long training for Junior Master Gardener instructors here in Spencer on Friday, Feb. 1 from 9 AM to 2 PM at the Roane County Library with the Little Kanawha Conservation District (it would be Jr Master Gardener training only, not Lego Robotics at this time). This workshop would be free to the public with the exception of lunch. We could charge a fee for lunch or the district could sponsor lunch. Whatever the supervisors want to do. If the supervisors are on-board with this training, I can promote it to my current Master Gardeners, the LKCD Supervisors themselves, area Extension Agents and Supervisors, NRCS staff, and teachers as well.

Thanks so much for your consideration!

Brandy

*Brandy E. Brabham  
WVU-Roane County Extension Agent  
Agriculture and Natural Resources  
110 Parking Plaza  
Spencer, WV 25276  
Phone: 304-927-0975  
Fax: 304-927-0983  
Email: [Brandy.Brabham@mail.wvu.edu](mailto:Brandy.Brabham@mail.wvu.edu)*

---

**From:** Figgatt, Aimee [mailto:[afiggatt@wvca.us](mailto:afiggatt@wvca.us)]  
**Sent:** Friday, January 4, 2019 11:28 AM  
**To:** Figgatt, Aimee <[afiggatt@wvca.us](mailto:afiggatt@wvca.us)>  
**Subject:** WVACD Funded FIRST Robotics and Jr. Master Gardener Training Workshops

Hello all,

With grant funding from the West Virginia Association of Conservation Districts, Tina Kirk, a teacher at Winfield High School will be hosting STEM Based Conservation Curriculum Workshops throughout the state of West Virginia between January 2019 and June 2019. Programs include a half-day *FIRST Robotics Jr FLL, FLL, and FRC* overview and workshop. I will be assisting her by instructing a half-day Master Gardener Curriculum overview and hands on based learning workshop. Students from Putnam Area Robotics Team 3492 will be assisting the classroom participants as a part of their FIRST Chairman's outreach program.

We are still setting up dates and centralized locations for our trainings and seek your assistance with sharing the information and locating venues in your area to hold the trainings. We would need classroom/meeting room spaces and expect to accommodate up to 20 adults per workshop. (40 adults per day) Our plan is to host two workshops in Kanawha County in February and move up into the Elk Conservation District area in March. (Braxton/Clay/Nicholas/Webster Counties) and continue into other areas from there. Please contact me asap if you are interested in having us come to your area!

Attached is the application for the Putnam County area trainings. Attendees from surrounding counties are welcome to attend!

Please share with teachers, homeschool groups, 4-H clubs, Scout troops, agriculture professionals or community volunteers you feel would be interested. Scholarships for this workshop are available statewide!

Thank you for your assistance! Aimee

Aimee Neeley Figgatt  
Outreach Specialist, WV Conservation Agency  
255 Gus R. Douglass Lane  
Charleston, WV 25312

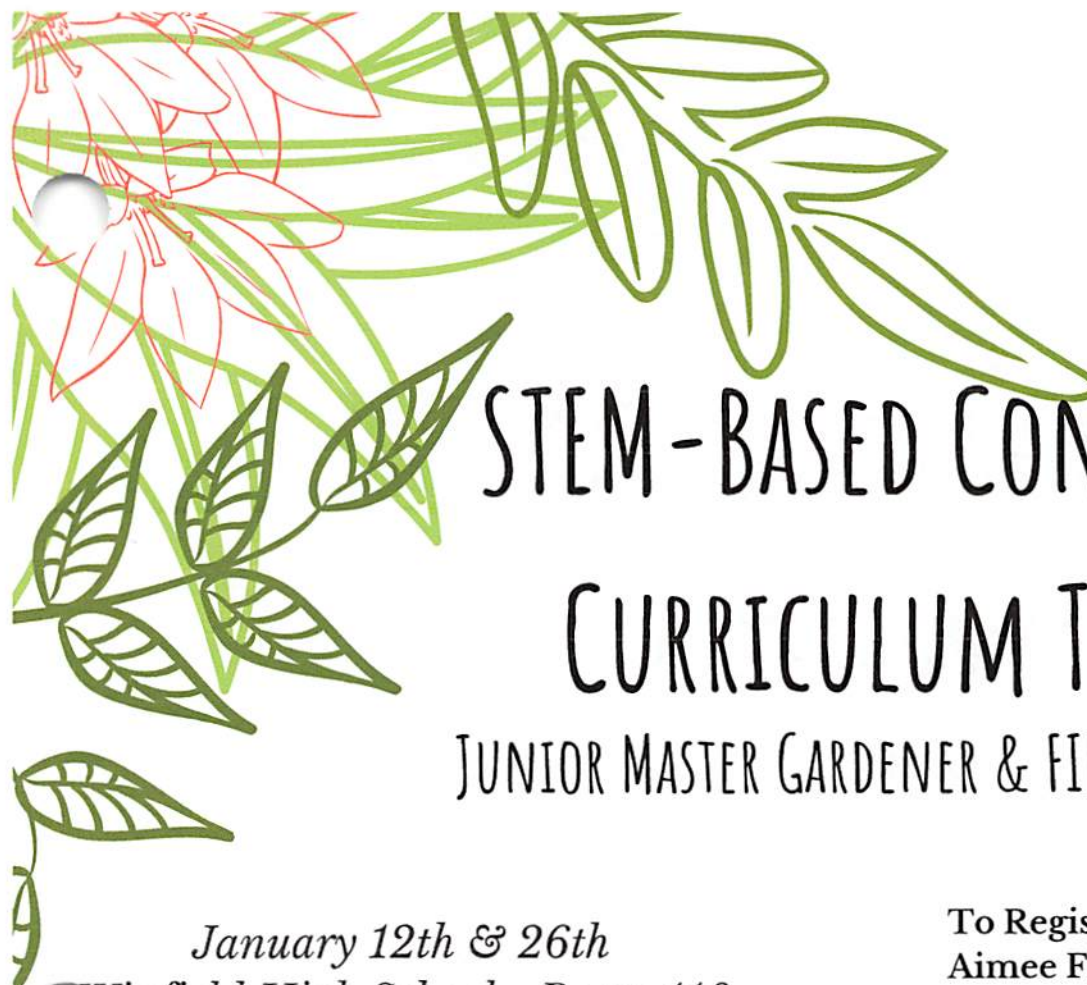
**Contact Information:**

afiggatt@wvca.us  
Office: 304.957.1400  
Cell: 304.380.6336

**West Virginia Soil Tunnel Trailer Information:**

[soiltrailer@wvca.us](mailto:soiltrailer@wvca.us)





# STEM-BASED CONSERVATION CURRICULUM TRAINING

## JUNIOR MASTER GARDENER & FIRST LEGO LEAGUE JR.

*January 12th & 26th*

*Winfield High School - Room 110*

*8:00 am to 4:00 pm*

Open to elementary, home school,  
and 4-H educators

Must register, limit 20 per class

\$50 per participant

\*Lunch provided\*

*Participants will receive:*

*-JMG Health & Nutrition in the  
Garden Textbook*

*-STEM Classroom Materials*

*Funding Provided by:*

West Virginia Association of Conservation Districts

Capitol Conservation District

*Sponsored by:*

West Virginia Conservation Agency

Putnam Area Robotics Team, Instructor, Tina Kirk

To Register Contact:

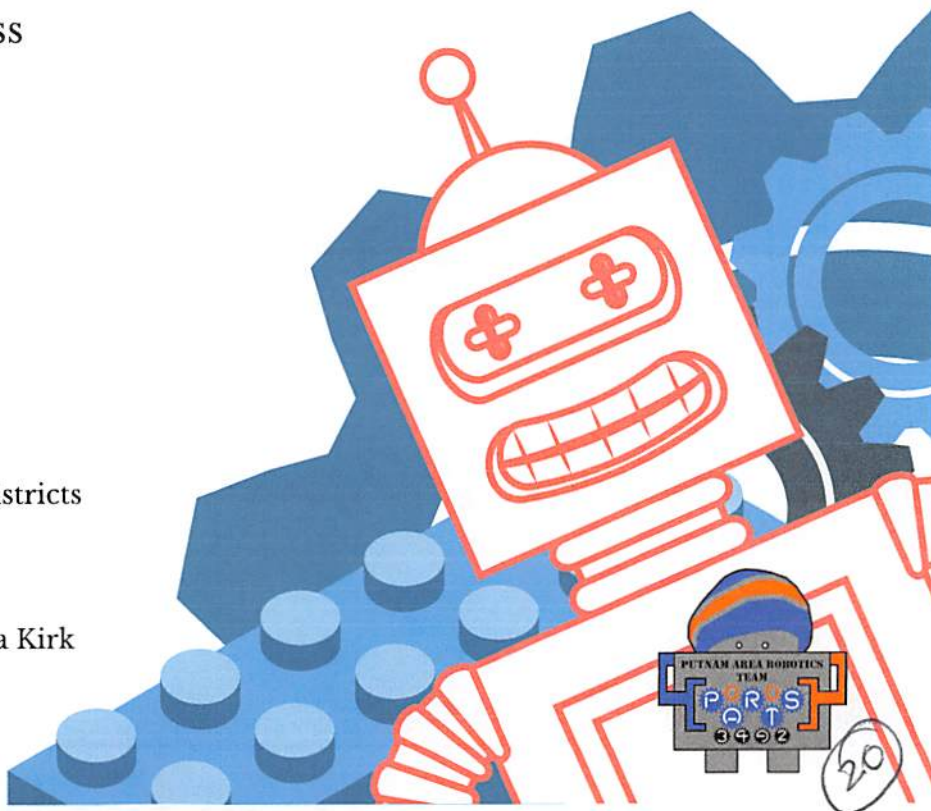
Aimee Figgatt

West Virginia Conservation Agency

Outreach Specialist

[afiggatt@wvca.us](mailto:afiggatt@wvca.us)

(304) 957-1400



# STEM-BASED CONSERVATION CURRICULUM TRAINING

## Jr. Master Gardener and FIRST® Lego League Robotics

Putnam County Workshops – Winfield High School - Room 110

Date attending:        ☐ January 12, 2018        ☐ January 26, 2018

Name: \_\_\_\_\_ email \_\_\_\_\_

Address: \_\_\_\_\_ City: \_\_\_\_\_

State \_\_\_\_\_ Zip \_\_\_\_\_ Phone number \_\_\_\_\_

### *Please Check:*

☐ Classroom Instructor   ☐ Homeschool Parent/Instructor   ☐ 4-H or Scout Troop Leader   ☐ Agriculture Specialist   ☐ Other

- Doors open at 8:00 am. Classroom instruction begins at 9:00 am.
- Morning coffee and refreshments will be served
- FREE! Jr. Master Gardener Health and Nutrition in the Garden Textbook and STEM Classroom Materials
- 9:00 am to 11:30 am FIRST Robotics Overview
- 11:30 am to 12:30 pm boxed Subway lunch provided. Check here for Vegetarian Option ☐
- Lunch presentation by Dr. Chuck Talbott, WVU Extension Service, Garden Based Learning Program
- 12:30 pm to 4:00 pm Jr. Master Gardener Program

**Please arrive on time. Attire is casual and comfortable. Be prepared for a relaxing, fun day!**

***Please email this application to: Aimee Figgatt - [afiggatt@wvca.us](mailto:afiggatt@wvca.us)***

***To register by phone 304.380.6336***

Funding Provided By: The WV Association of Conservation Districts

Sponsorship Provided By: Capitol Conservation District, West Virginia Conservation Agency, Putnam Area Robotics Teams, Winfield High School





December 11, 2018

Dear Little Kanawha Conservation District Supervisors:

I am writing to invite you to partner with the West Virginia University Extension Service in Roane County to sponsor our progressive farmer dinner meeting series offered January, February, and March. You have partnered with WVU Extension in the past to offer meals during these meetings and I humbly request your continued support.

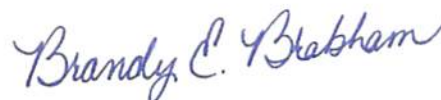
I also plan to partner with Farm Credit of the Virginias to advertise and promote the event. They will provide door prizes and some plastic ware supplies for the meals as well.

I would also like to invite you to have an informational booth at all of these meetings or select a speaker at one of these meetings to briefly discuss the programs that the LKCD offers farmers in our area. In the past, I have given credit to all program sponsors and the services and/or products they provide. I am also willing to continue to do that as well as provide any literature that you supply me with at these meetings. The dinners have typically cost me \$150 each. I humbly request \$450 from you to help offset the costs for these meetings. Please note that any monetary sponsorship you could provide would be appreciated!

Enclosed, please find is a draft flyer advertising the upcoming meetings. If you are able to provide any sponsorship, please let me know as soon as possible and help me by distributing copies of the enclosed flyer in your area. Checks should be made payable to the Roane County Commission (*memo Roane Co. Extension Dinner Meetings*). If you have any questions or concerns, please contact me at 304-927-0975 or email me at [brandy.brabham@mail.wvu.edu](mailto:brandy.brabham@mail.wvu.edu).

I look forward to working with you on this and/ or future endeavors!

Sincerely,



Brandy E. Brabham  
Extension Agent





## ROANE/JACKSON COUNTY PROGRESSIVE FARMER 2019 DINNER MEETING SERIES

### • **Tuesday, January 22, 2019**

“Beef Cattle Handling,” by Dr. Steve Boyles; Ohio State University. Location: Roane County High School Vo-Ag Department, Spencer, WV.

### • **Tuesday, February 20, 2019**

“Soil Testing & Fertility,” by Dr. Tom Basden, West Virginia University. Location: Roane County High School Vo-Ag Department, Spencer, WV.

### • **Wednesday, March 18, 2019**

“Farming and Pipelines,” by Williams Company. Location: WVU-Jackson County Extension Office, Cottageville, WV.

Agriculture producers and landowners encouraged to attend! Call ahead to pre-register. Arrive by 6:30 p.m. for dinner!

For more information or to pre-register, call 304-927-0975 or email [brandy.brabham@mail.wvu.edu](mailto:brandy.brabham@mail.wvu.edu).

Sponsored by:

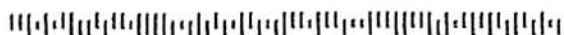


#### Local Sponsors:

Farm Credit

Little Kanawha  
Conservation District

## Billing Address for Card



# Little Kanawha Conservation District Income

## (December 12<sup>th</sup> – January 9<sup>th</sup>, 2019)

### Typar:

50 feet \$50.00

**Total: \$50.00**

### Tree Tubes

450 \$1,575.00

**Total: \$1575.00**

Float Profit: \$18.64

Tree Tubes: \$441.00

**Total Income: \$459.64**

### Lime Spreaders:

2 Ton \$50.00

2 Ton 2 days \$100.00

**Total: \$150.00**

### Floats

2 Float sets \$116.00

1 Float value \$34.00

**Total: \$150.00**

### No- Till

17 Acres \$255.00

11 Acres \$165.00

21 Acres \$315.00

**Total: \$735.00**

**Total Income  
from January  
2018 - Now:  
\$4,348.90**



**Region 6 Landowner Assistance Program Accomplishments for December 2018**

102 requests were received in Region 6. 64 of these requests were incidental covering a wide variety of topics such as logging complaints, Fire season, logging classes, etc.

**Cabwaylingo State Forest:**

Right Fork of Spruce Creek timber was purchased by Tolsia Lumber Co.

**Little Kanawha Conservation District:** (Copeland, Stephens, King, Robinson, Murdock and Minton)

Three reconnaissance were conducted to make recommendations. Seven practice plans were written consisting of 161 acres. 32 acres of TSI were marked. 60 acres of timber were marked with an estimated volume of 187.736 MBF. 315 acres were cruised with an estimated volume of 321.845 MBF. One forestland management plan was written. One program was held consisting of 168 seat hours. Three acres of site prep for planting and seeding was determined. One Stewardship Plan was written and twenty-one 319 water quality contacts were made.

**Upcoming Events:**



## January 2019 Watershed Report

### CCRs:

No new ones received

**Stream Permits:** no new ones received, currently working on two sites:

- James Emery-Middle Fk of Lee Ck
- Kenneth Gould-Trib of NF of Hughes

### O&M:

- North Fork of the Hughes: EAP Up to Date
- Pocatalico 14: EAP Up to Date
- Pond Run: EAP Up to Date
- Pullman 01: EAP Up to Date
- Walker Creek: EAP Up to Date
- Bonds Creek 01: EAP Up to Date

### North Fork of Hughes:

Potesta has completed the current scheduled mussel study and will be submitting to DNR on Friday.

Nichols, Jessica

---

From: USDA Farm Service Agency <usdafsa@service.govdelivery.com>  
Sent: Friday, December 21, 2018 3:27 PM  
To: lkcd  
Subject: Mill Run WV FSA Updates

December 2018



Farm Service Agency **Electronic News Service**

# BULLETIN

**GovDelivery**

Having trouble viewing this email? [View it as a Web page.](#)

- [USDA Acreage Reporting Deadline for Perennial Forage Changes to July 15](#)
- [Storage and Handling Trucks Eligible for Farm Storage Facility Loans](#)
- [USDA Packages Disaster Protection with Loans to Benefit Specialty Crop and Diversified Producers](#)

---

## Mill Run FSA Updates

---

**Mill Run FSA Office**  
91 Boyles Lane  
Parkersburg, WV 26104

Phone: 304-422-9072

Fax: 855-854-3082

**County Executive Director:**  
Eleanor N. Grogg

**Farm Loan Manager:**  
Jennifer L. Fisher

**Program Technicians:**  
Teresa Painter  
Sheila Dye

**County Committee:** Jeffry  
McElfresh -Chair  
Suzanne Dietz- Vice Chair  
Bryan Sims

## USDA Acreage Reporting Deadline for Perennial Forage Changes to July 15

USDA Farm Service Agency (FSA) has established a new acreage reporting deadline for perennial forage for 2019 and subsequent years. Previously set in the fall, the new deadline is July 15 for all states, except for Hawaii and Puerto Rico.

Timely and accurate acreage reports for all crops and land uses, including prevented planting or failed acreage, are the foundation for many FSA program benefits, including disaster programs for livestock owners. Producers must report their acreage to maintain program eligibility.

Producers who have coverage for perennial forage under the Noninsured Crop Disaster Assistance Program (NAP) must report their crop acreage by the earlier of any of the following:

- the established acreage reporting date (July 15)
- 15 calendar days before the onset of harvest or grazing of the specific crop acreage being reported
- the established normal harvest date for the end of the coverage period.

**Next County Committee**  
**Meeting:** January 23rd @ 10:00  
am

---

## Storage and Handling Trucks Eligible for Farm Storage Facility Loans

Farm Storage Facility Loans (FSFL) provide low-interest financing so producers can build or upgrade facilities to store commodities. Some storage and handling trucks are eligible for the FSFL. These include:

- **Cold Storage Trucks**-A van or truck designed to carry perishable freight at specific temperatures. Cold storage trucks can be ice-cooled or equipped with any variety of mechanical refrigeration systems.
- **Flatbed Trucks**-Truck with an open body in the form of a platform with no side walls for easy loading and unloading. These trucks can be categorized into different sizes which range from light, medium, or heavy duty, compact or full-size, or short and expandable beds.
- **Grain Trucks**-A piece of farm equipment specially made to accommodate grain products and are traditionally truck chassis units with a mounted grain "dump" body where grain commodities are transported from a field to either a grain elevator or a storage bin.
- **Storage Trucks with a Chassis Unit**-Commonly referred to as a box truck, box van or straight truck, is a truck with a cargo body mounted on the same chassis with the engine and cab.

To be eligible for FSFL, the storage and handling truck must be less than 15 years old and have a maximum of four axles with a gross weight rating of 60,000 pounds or less. Pick-up trucks, semi-trucks, dump trucks, and simple insulated and ventilated vans are ineligible for FSFL.

FSFL for storage and handling trucks must be \$100,000 or less. FSFL-financed storage and handling trucks must be used for the purpose for which they were acquired for the entire FSFL term.

Eligible commodities include grains, oilseeds, pulse crops, hay, honey, renewable biomass commodities, fruits and vegetables, floriculture, hops, maple sap, milk, cheese, yogurt, butter, eggs, meat/poultry (unprocessed), rye and aquaculture.

For more information or to apply for a FSFL, contact your local [FSA Service Center](#).

---

## USDA Packages Disaster Protection with Loans to Benefit Specialty Crop and Diversified Producers

*Free basic coverage available for new and underserved loan applicants*

Producers who apply for FSA farm loans will be offered the opportunity to enroll in the Noninsured Crop Disaster Assistance Program (NAP). NAP is available to producers who grow noninsurable crops, and is especially important to fruit and vegetable producers and other specialty crop growers.

New, underserved and limited income specialty growers who apply for farm loans could qualify for basic loss coverage at no cost.

The basic disaster coverage protects at 55 percent of the market price for crop losses that exceed 50 percent of production. Covered crops include "specialty" crops, for instance, vegetables, fruits, mushrooms, floriculture, ornamental nursery, aquaculture, turf grass, ginseng, honey, syrup, hay, forage, grazing and energy crops. FSA allows beginning, underserved or limited income producers to obtain NAP coverage up to 90 days after the normal application closing date when they also apply for FSA credit.

Producers also may work with FSA to protect value-added production, such as organic or direct market crops, at their fair market value in those markets. Targeted underserved groups eligible for free or



discounted coverage are American Indians or Alaskan Natives, Asians, Blacks or African Americans, Native Hawaiians or other Pacific Islanders, Hispanics, and women.

FSA offers a variety of loan products, including farm ownership loans, operating loans and microloans that have a streamlined application process.

Growers need not apply for an FSA loan, nor be a beginning, limited resource, or underserved farmer, to be eligible for Noninsured Crop Disaster Assistance Program assistance. To learn more, visit [www.fsa.usda.gov/nap](http://www.fsa.usda.gov/nap) or [www.fsa.usda.gov/farmloans](http://www.fsa.usda.gov/farmloans), or contact your local FSA office at <https://offices.usda.gov>.


---

Persons with disabilities who require accommodations to attend or participate in this meeting should contact Eleanor N. Grogg at 304-422-9072 extension 2 or Federal Relay Service at 1-800-877-8339.

---

USDA is an equal opportunity provider, employer and lender. To file a complaint of discrimination, write: USDA, Office of the Assistant Secretary for Civil Rights, Office of Adjudication, 1400 Independence Ave., SW, Washington, DC 20250-9410 or call (866) 632-9992 (Toll-free Customer Service), (800) 877-8339 (Local or Federal relay), (866) 377-8642 (Relay voice users).

---

 SHARE



Questions?  
[Contact Us](#)

STAY CONNECTED:



SUBSCRIBER SERVICES:

[Manage Preferences](#) | [Delete Profile](#) | [Help](#)

This email was sent to lkcd@wvca.us using GovDelivery Communications Cloud on behalf of:  
USDA Farm Service Agency · 1400 Independence Ave., S.W. · Washington, DC 20250 · 800-439-1420

**GOVDELIVERY** 

Nichols, Jessica

---

From: USDA Farm Service Agency <usdafsa@service.govdelivery.com>  
Sent: Friday, January 4, 2019 12:01 PM  
To: lkcd  
Subject: FSA Shutdown Update

December 26, 2018



Farm Service Agency **Electronic News Service**

## BULLETIN

**GovDelivery**

Having trouble viewing this email? [View it as a Web page.](#)

---

### Farm Service Agency Shutdown Update

USDA Farm Service Agency county offices will not be operating after December 28, 2018, due to the lapse in appropriation. More information on USDA-wide resources and services can be found [here](#).

#### Market Facilitation Program

Market Facilitation Program payments for producers that have already certified production with the Farm Service Agency will continue beyond January 1, 2019. Signup for the Market Facilitation Program ends on January 15, 2019. Secretary Perdue will determine if the deadline should be extended. You do not need to be finished with harvest to sign up. Farmers have until May 1, 2019, to certify production.

#### FSA Loan Guidance

Due to the lapse in federal government funding for all commodity loan activity has ceased as of January 3, 2019. This includes any loan activity conducted by DMA's, LSA's, and CMA's. Access to the following automated FSA systems will no longer be available: Commodity Loan Processing System (CLPS), Cotton On-Line Processing System (COPS), Automated Cotton Reporting System (ACRS), and Centralized Cotton Redemption (CCR).

#### Commodities Pledged as Collateral for a Commodity Loan

Farm-stored commodities pledged as Commodity Credit Corporation collateral can be marketed (moved for purchase to a buyer) or fed, however, the following activities will not be processed while the government is shutdown:

- Loan repayments
- Loan disbursements
- Refunds
- Termination of transfers

During the shutdown, movement of collateral will be treated the same as loan collateral moved on a non-workday (same as a weekend or federal holiday). Producers with farm-stored loans may move loan collateral to non-designated structures during this period without prior written approval, provided the producer requests a CCC-681-1 Marketing Authorization on the next business day either by phone or in person.

#### **FSA Farm Loan (Direct and Guaranteed) and FSA Farm Storage Facility Loans (FSFL)**

Producers interested in FSA loan assistance may obtain more information for the following loan activity. The following sites provide the necessary forms to submit to apply along with information regarding the loan programs:

- [Farm Operating Loans](#)
- [Microloans](#)
- [Farm Ownership Loans](#)
- Farm Storage Facility [Loans Fact Sheet](#):

Please note these websites will not be current or maintained until funding issues have been resolved.

Loan applications will not be processed or considered until the lapse in federal funding has been resolved.

#### **Acceptance of FSA Farm Loan and FSA Farm Storage and Facility Loan Payments:**

If borrowers wish to remit payments, checks and money orders can be sent by mail to the local FSA office. Payments will be credited after the lapse in federal funding has been resolved. The postmark on the envelope will be used as the received date of the payment. FSFL and Direct Loans will not be deemed delinquent if a borrower is unable to make a payment due to offices being closed because of a lapse in federal funding.

#### **Release of Normal Income Security:**

Customers requesting the release of proceeds from the sale of crops, livestock or other security are advised to contact the office after the lapse in federal funding has been resolved. You can find your local office by visiting <https://www.farmers.gov/service-locator>.

---

USDA is an equal opportunity provider, employer and lender. To file a complaint of discrimination, write: USDA, Office of the Assistant Secretary for Civil Rights, Office of Adjudication, 1400 Independence Ave., SW, Washington, DC 20250-9410 or call (866) 632-9992 (Toll-free Customer Service), (800) 877-8339 (Local or Federal relay), (866) 377-8642 (Relay voice users).



SHARE



Questions?  
[Contact Us](#)

STAY CONNECTED:



SUBSCRIBER SERVICES:

[Manage Preferences](#) | [Delete Profile](#) | [Help](#)

This email was sent to lkcd@wvca.us using GovDelivery Communications Cloud on behalf of:  
USDA Farm Service Agency · 1400 Independence Ave., S.W. · Washington, DC 20250 · 800-439-1420

**GOVDELIVERY** 

**Nichols, Jessica**

---

**From:** Tiffany Bennett <tiffandgabebennett@yahoo.com>  
**Sent:** Wednesday, December 26, 2018 12:41 PM  
**To:** Nichols, Jessica  
**Subject:** Unable to fill the position

Hi Jessica. I'm disappointed to ask that you please do not submit my application to the state for approval for the position of calhoun county supervisor. Due to recent unforeseen circumstances I will not be able to fill the position. I do apologize for any inconvenience that this has created and I greatly appreciate the opportunity that was given to me. It was nice meeting all of you. Thanks again.

Sent from my iPhone



## Long Sleeve Value Denim Shirt. SP10



With sturdy construction, a generous cut and soft garment washing, our Value Denim Shirt won't stretch your budget.

- 6.5-ounce, 100% cotton
- Double-needle stitching throughout
- Button-down collar
- Horn tone buttons
- Left chest pocket
- Button-through sleeve plackets
- Adjustable cuffs
- Shirttail hem
- Due to special finishing process, colors may vary.

## CARE INSTRUCTIONS

Machine wash cold with like colors. Do not bleach. Tumble dry low. Warm iron if necessary.



front



back

## HOW TO MEASURE



## CHEST

With arms down at sides, measure around the upper body, under arms and over the fullest part of the chest.

## ARM

Place hand on hip. Start at the center of the back of the neck and measure across the shoulder to the elbow, and then down to the wrist.

## NECK

Measure around the base of the neck, inserting a finger or two between the tape and neck for comfort.

*Handwritten notes:*  
 $519.98 + \$5 \text{ (1-location emb)} \times 5-XL$   
 $2x-add \$2$   
 $3x-add \$6$   
 $4x-add \$7$   
 $5x-add \$8$   
 $6x-add \$9$

## SIZE CHART

	XS	S	M	L	XL	2XL	3XL	4XL	5XL	6XL
Chest	32-34	34-36	36-38	40-42	44-46	47-49	50-52	54-56	58-60	61-63
Neck	13-14	14-15	15-16	16-17	17-18	18-19	19-20	20-21	21-22	22-23
Arm	28	29	30	31	32	33	34	35	36	37

## COLOR INFORMATION



Indigo



Navy Blue





## Ladies Long Sleeve Value Denim Shirt. LSP10



With sturdy construction, a generous cut and soft garment, wearing our Value Denim shirt won't stretch your budget.

- 16.5-ounce, 100% cotton
- Double-needle stitching throughout
- Traditional, relaxed look
- Open collar
- Horn-tone buttons
- Button-through sleeve plackets
- Adjustable cuffs
- Shirttail hem
- Due to special finishing process, colors may vary.

### CARE INSTRUCTIONS

Machine wash cold with like colors. Do not bleach. Tumble dry low. Warm iron if necessary.



front



back

### HOW TO MEASURE

#### BUST

With arms down at sides, measure around the upper body under arms and around the fullest part of the bust.

#### ARM

Place hand on hip. Start at the center of the back of the neck and measure across the shoulder to the elbow, and then down to the wrist.

### SIZE CHART

	XS	S	M	L	XL	XXL	3XL	4XL
Size	2	4-6	6-8	10-14	16-18	20-22	24-26	28-30
Bust	31-34	35-36	37-38	39-41	42-44	45-47	48-51	52-55
Arm	30 1/2 - 31 1/4	31 1/2 - 32 1/4	32 1/2 - 33 1/4	33 1/2 - 34 1/4	34 1/2 - 35 1/4	35 1/2 - 36 1/4	36 1/2 - 37 1/4	37 1/2 - 38 1/4

### COLOR INFORMATION



PORT AUTHORITY

## Port Authority® Heavyweight Denim Shirt. S100

With a more substantial stone-washed fabric and extra durable seams, our heavyweight Denim Shirt is built to improve beautifully. No back pleat means an uninterrupted canvas for decoration.

- 12.5-ounce, 100% cotton
- Double- and triple-needle stitching
- Button-down collar
- Hornstone buttons
- Left chest pocket
- Button-through sleeve plackets
- Adjustable cuffs
- Tuck-in tail

## CARE INSTRUCTIONS

Machine wash cold with like colors. Do not bleach. Do not dry clean. Tumble dry low. Warm iron if necessary.



Front



\$29.98 + \$5 (1-location crest emb.) x 5-XL  
 2x-add \$2    4x-add \$7  
 3x-add \$6

## HOW TO MEASURE



## CHEST

With arms down at sides, measure around the upper body, under arms and over the fullest part of the chest.

## SLEEVE

Place hand on hip. Start at the center of the back of the neck, measuring across the shoulder to the elbow, and then down the arm.

## NECK

Measure around the base of the neck, inserting a finger or two between the tape and neck for comfort.

## SIZE CHART

	XS	S	M	L	XL	2XL	3XL	4XL
Chest	32-35	35-37	38-40	41-43	44-46	47-49	50-53	54-57
Neck	12 1/2 - 13	14 - 14 1/2	15 1/2 - 16	16 1/2 - 17	18 1/2 - 19	20 1/2 - 21	22 1/2 - 24	26 1/2 - 28
Arm	26 1/2	27	28	29	30 1/2	32 1/2	35 1/2	38 1/2

## COLOR INFORMATION



Blue

## **Hayes, Mikayla - NRCS, Parkersburg, WV**

---

**From:** Greenleaf, Barbara - NRCS, Parkersburg, WV  
**Sent:** Wednesday, January 9, 2019 2:27 PM  
**To:** Hayes, Mikayla - NRCS, Parkersburg, WV  
**Subject:** Appalachian Grazing Conference

Mikayla,

I asked you the other day if you were planning on helping out with the Appalachian Grazing Conference in March. If you want to help, would you ask whoever you need to, if you could help again for this conference like you did for the last grazing conference, if needed. We have a conference committee meeting tomorrow and will be discussing who we have helping and how much help will be needed. I will find out tomorrow for sure if we will need your help or not. My thoughts are that we would be glad to have your help and it would be greatly appreciated. I just feel more comfortable getting the go-ahead from the committee before I tell you for sure. I'm not sure how many supervisor's wives or others will be there helping. We lost Norma from the committee and will really miss her help.

Thanks.

Barbara



APPALACHIAN GRAZING CONFERENCE  
MORGANTOWN MARRIOTT AT WATERFRONT PLACE HOTEL  
DRAFT PROGRAM

MARCH 8, 2019

**OPENING GENERAL SESSION**

*Sarah Flack*

Sheep & Goat Pasture Management

*Sarah Flack*

**CONCURRENT SESSION 1**

Friday AM

Fencing

Water--Too Much, Too Little

Keeping Animals Healthy--Beef Cattle Health  
*Kevin Shaffer*

**Friday Afternoon General Session**

Improving Animal Efficiency and Water Quality Systems: A Sustainable  
Agricultural Model Farm

Growing Healthy, High Quality, Vigorous Forages

Managing Pastures --Plant & Animal Health Perspective  
*Ed Rayburn*

2:30- 3:15 PM- Jason Hubbard- Overview, Environmental and Water Quality  
Associate Dean for Research

Risk Management  
*Tom McConnell*

Davis College of Agriculture, Natural Resources and Design

Lunch

*Commissioner Kent Leonhardt*

3:15-3:45 PM- Matt Wilson- Animal - Forage/Livestock Systems

Associate Dean for Programs

**CONCURRENT SESSION 2**

Friday PM

Davis College of Agriculture, Natural Resources and Design

Water Conservation and Capture  
*JB Harold & Tim Elder*

3:45-4:15 PM- Isaac Wolford- Benefits/Value to State and Federal Agencies

State Agronomist

Keeping Animals Healthy-- Vaccination Program, Worming and Fly Control  
*Darin Matlick*

USDA-NRCS

Managing & Controlling Weedy Grasses  
*Rakesh Chandran*

4:15-4:45 PM- General Questions and Discussion-30 minutes

APPALACHIAN GRAZING CONFERENCE  
MORGANTOWN MARRIOTT AT WATERFRONT PLACE HOTEL  
DRAFT PROGRAM

MARCH 9, 2019

GENERAL SESSION

*Allen Williams*

CONCURRENT SESSION 3

Saturday AM

Grazing and Soil Health

*Allen Williams*

Why/How--Stocking Rates

*John Genho*

KY 31 Tall Fescue Toxicity--What's the Problem & How to Deal with It

*Glen Aiken*

Better Grazing: Lessons on Efficient Forage Management from the Best in the World

Seeding: Simple vs. Complex Mixtures

*Kings AgriSeed*

CONCURRENT SESSION 4

Soil Health - Farmer View

*Don Jackson*

Benefits of Grass Fed Beef

*Allen Williams*

KY 31 Tall Fescue--How to Replace It

*John Andrae*

The Technical Revolution: Tools & Techniques Worth Considering (Phone Apps)

*Tom Ulrich*

CONCURRENT SESSION 5

Saturday PM

Knowing the Soils on My Farm & How do I Make Improvements Based on My Soils

*Ed Rayburn & Tom Basden*

How I Raise & Direct-Market My Grass-Fed Livestock (Beef, Lamb, Pork)

*Roy Brubaker & Julie Hurst*

Tall Fescue Renovation--Farmer Perspective

*Buron Lanier*

Intensive Grazing Management

*Cliff & Maggie Hawbaker*

CLOSING SESSION

\*Several Vendor Breaks are scheduled on March 8<sup>th</sup> and 9<sup>th</sup> between speaking sessions.

### 2019 District Board Meeting Dates

January 10th	10:00 a.m.	Mill Run Agricultural Service Center, Parkersburg
February 12th	10:00 a.m.	Mill Run Agricultural Service Center, Parkersburg
March 12th	10:00 a.m.	Mill Run Agricultural Service Center, Parkersburg
April 11th	10:00 a.m.	Mill Run Agricultural Service Center, Parkersburg
May 14th	10:00 a.m.	Mill Run Agricultural Service Center, Parkersburg
June 11th	10:00 a.m.	Mill Run Agricultural Service Center, Parkersburg
July 11th	10:00 a.m.	Mill Run Agricultural Service Center, Parkersburg
August 13th	10:00 a.m.	Mill Run Agricultural Service Center, Parkersburg
September 10th	10:00 a.m.	Mill Run Agricultural Service Center, Parkersburg
October 10th	10:00 a.m.	Mill Run Agricultural Service Center, Parkersburg
November 12th	10:00 a.m.	Mill Run Agricultural Service Center, Parkersburg
December 12th	9:00 a.m.	Mountwood Park Administration Building, Waverly

Agendas are available at least three days prior to the meeting and may be obtained by calling the Little Kanawha Conservation District at 304-422-9088.

Concerned citizens living in the Calhoun, Ritchie, Roane, Wirt and Wood County areas are invited to attend and give their input on issues concerning conservation. Please contact the District Office to be placed on the agenda to speak.

If you need additional information regarding the meeting please call the district office at 304-422-9088 or email [LKCD](mailto:LKCD).

### 2019 District Office Closure Dates

January	1st	New Year's Day – Holiday
	21st	Martin Luther King Jr Day – Holiday
February	18th	President's Day – Holiday
March	None	None
April	None	None
May	27th	Memorial Day – Holiday observed
June	20th	Statehood Day – Holiday
July	4th	Independence Day – Holiday
August	None	None
September	2nd	Labor Day – Holiday
October	14th	Columbus Day – Holiday
November	11th	Veteran's Day – Holiday observed
	28th	Thanksgiving Day – Holiday
	29th	Lincoln's Day – Holiday
December	24th	Christmas Eve – ½ Day Holiday
	25th	Christmas Day – Holiday
	31st	New Year's Eve – ½ Day Holiday



**WV ENVIROTHON COMMITTEE  
DRAFT MINUTES 12-5-2018**

**Present:** Wayne McKeever, UOCD; Dorothy Stewart, Volunteer; Bill Stewart, GCD; Tammy McKeever, Volunteer; Jane Collins, WFCD; Earlene Foster, Volunteer; Donnie Tenney, TVCD; Sam Sheets, LKCD; Jim Foster, WFCD; Shirley Hyre, ECD; Clark Mollohan, ECD; James B. Nester, Sr, TVCD; Johnny King, WVDOH; Belva Junkins, WFCD

**Video/Conference Call:** Heather Duncan, EPCD; Davin White, WVCA; Thanh Ashman, LKCD; Lin Dunham, EPCD

**Special Note:** State and federal offices were closed due to the President and Governor calling for a National Day of Mourning for President H.W. Bush

**Call to Order:** Chairman Wayne McKeever called the meeting to order at 10:04 AM at the ECD/WVACD Conference Room.

**Pledge of Allegiance:** The Pledge of Allegiance was recited by all and led by Jim Foster. Jim asked those in attendance to remember HW Bush as a WWII veteran.

**Introductions:** None needed.

**Agenda Approval:** Jim Foster moved to approve the agenda as presented. Motion was properly seconded. Motion carried.

**Review and Approval of 11/7/18 Minutes:** Jane Collins moved to approve the minutes as printed. Jim Foster seconded the motion. Motion carried.

**Financial Report:** Shirley Hyre reported there is \$86,318.01 in the general account and \$31,827.59 in the general CD. There is \$11,936.09 in the scholarship account and \$14,923.75 in the scholarship CD. The total amount in all accounts is \$145,005.44. It was noted that checks were to be signed for the 15 training trunks. Those funds will be reimbursed by the NRCS education grant. **The report was filed for audit by Chairman McKeever.**

**NCF Report:** Chairman McKeever reported that Jennifer Brooks is the new NCF Envirothon Program Manager. This is now a full time position. He also reminded everyone that the [www.envirothon.org](http://www.envirothon.org) website is good for resources and study materials.

**Correspondence:** None

**Committee Breakouts:** 10:15 am – 11:00 am

**Committee Reports:** 11:00 am

**Education: Johnny King, Chair:** Middle school competition is being tabled for now. Work is being done on questioning teachers and will be a discussion point at the teacher meeting at the 2019 competition. Committee is on schedule currently for the competition. The 5<sup>th</sup> topic will be e-mailed to the committee for review since no one was available in person today to discuss.

**Finance: Joe Gumm, Chair; Shirley Hyre, Reporting:** The training totes cost \$6,289.45 and \$66.60 for the containers and those funds will be reimbursed by NRCS. \$13,967.49 was received by NRCS for reimbursement of NCF Envirothon expenses and other expenses. Tammy McKeever contacted the WV Oil and Natural Gas Association on November 28 for the sponsorship of the 4<sup>th</sup> place scholarship in the amount of \$1,750. An inquiry was also sent to American Electric Power (AEP). No responses have been received yet.

**Public Relations: Davin White, Chair:** Becky Haddix will design a pop up banner for the group. The WVEC may need to order the hardware for the banner (\$60-65 for hardware). The cost of WVDA printing will be \$58-59. When Districts schedule their spring trainings, contact Davin so he can work on promotions.

**Site: Jane Collins, Chair:** T-shirts were bided out this year. Bids were reported from the following on 4 colors:

Name	Special Notes	Set Up Charge	Delivery Fee	Price Per Shirt
Belva Junkins		\$18/color = \$72	\$0	\$13.05
Camden Creek	Order by 3/15	\$0	\$0	\$8.00
Sports Connection		\$0	\$0	\$9.50
Seneca Design		\$0	\$50	\$8.50

The site committee is recommending Seneca Design for a short sleeve t shirt for the students. The committee also discussed sweatshirts for the WVEC members. Company for the sweatshirts is undecided at this point. The cost and availability of transportation of teams during sites is still being discussed. County school busses are available for \$150 per bus. However, they are weather dependent and if there is no school, a bus is not available until 8:30-9:15 am. Site committee will contact CVR to see if a better price can be worked out for their shuttles (right now quoted at \$250/hour). Porta potties are still being worked on, along with emergency services. A nurse has been secured for the event. A life guard will be secured closer to the event date. Menu was decided, except for the last day and prices are still being discussed.

**Old Business:**

**Middle School Competition:** Discussed under Education report.

**New Business:**

**Registration Forms and Materials:** Tabled

**District Spring Trainings:** Discussed under Public Relations report

Upon no other business, the meeting was adjourned at 11:54 am.

Respectfully Submitted,

Heather Duncan, Secretary

***Next Committee Meeting: January 2, 2019 10:00 AM at WVACD/ECD Conference Room***

Office Use: Date Form Received: \_\_\_\_\_

# 2019 WV Envirothon Team Registration

(Reminder!! You can download registration form online at [www.wvca.us/envirothon](http://www.wvca.us/envirothon))

**EARLY REGISTRATION DEADLINE: March 1, 2019**

**LATE REGISTRATION DEADLINE: March 25, 2019**

\*\*\*\*\* NOTE: Fill out a separate form for each team being registered. \*\*\*\*\*

**Team members and advisors/chaperones are required to use the lodging and meal service provided by the WV Envirothon**

## Team Information

Team Name: \_\_\_\_\_

School: \_\_\_\_\_ County: \_\_\_\_\_

Conservation District (if known): \_\_\_\_\_

Address: \_\_\_\_\_

City: \_\_\_\_\_ Zip: \_\_\_\_\_ Phone: \_\_\_\_\_

Local Media Contact Info: Newspaper (Name, Address, Phone): \_\_\_\_\_

TV Station (Name, Address, Phone): \_\_\_\_\_

Competing as an FFA Team? ☐ YES ☐ NO

## Team Advisor

Name: \_\_\_\_\_ Male or Female (circle one)

Phone Number (Home/Cell): \_\_\_\_\_

Phone Number (Work): \_\_\_\_\_

Fax: \_\_\_\_\_

Email: \_\_\_\_\_

**\*If you have both males and females on your team, your assistant advisor must be of the opposite sex or you must provide a chaperone of the opposite sex.**

## Assistant Team Advisor

Name: \_\_\_\_\_ Male or Female (circle one)

Phone Number (Home/Cell): \_\_\_\_\_

Phone Number (Work): \_\_\_\_\_

Email: \_\_\_\_\_



Office Use: Date Form Received: \_\_\_\_\_

### Team Registration

Registration fees for team -- \$50.00 per team before March 1, 2019  
\$75.00 per team after March 1, 2019

List team members name, grade and shirt size (advisors and students) below.  
PLEASE PRINT CLEARLY!

NAME:	GRADE:	SHIRT SIZE:	SEX:
Advisor 1:	Advisor		M or F
Advisor 2:	Advisor		M or F
Student 1:			M or F
Student 2:			M or F
Student 3:			M or F
Student 4:			M or F
Student 5:			M or F
Alternate 1:			M or F
Alternate 2:			M or F

***Advisors, in this section please let us know of students' special needs,  
food allergies etc.***

Office Use: Date Form Received: \_\_\_\_\_

## 2019 WV Envirothon Lodging & Meals

The 2019 WV Envirothon will be taking place at Canaan Valley Resort & Conference Center.

The accommodations at the Resort are hotel style—double queen rooms. Rooms will be assigned to teams upon arrival at the event. Room assignments are prioritized based upon order of forms received. *There will not be co-ed rooms. Therefore, if you have males and females on your team your assistant advisor or chaperone must be of the opposite gender.*

**\*\*It is suggested to provide your own toiletries. Towels and bed linens are provided by the Resort\*\***

**\*\*Check out time is 11 am. Please make arrangements prior to arrival as all items must be out of the rooms by 11 am on Thursday, April 18, 2019\*\***

PLEASE NOTE: Team members and advisors/chaperones are required to use the lodging and meal service provided by the WV Envirothon, unless within commuting distance

Lodging	# Male needed	# Female needed	Total #	Total Cost
\$22.00 per person/night rooms	4	3	7	\$154
*Lodging available for Wednesday evening only.				
Meals			Total #	Total Cost
Wednesday Lunch \$12.00 (for teams arriving before 12:00 pm)			7	\$84
Wednesday Dinner (plus p.m. snack) \$23.00			7	\$161
Thursday Breakfast \$11.00			7	\$77
Thursday Lunch \$16.00 (Required)			7	\$112
Thursday Reception \$12.00			7	\$84
<b>Total For Lodging &amp; Meals</b>				\$672
<b>Grand Total For Lodging, Meals and Registration</b> (\$50 or \$75 registration fee)				\$722/ \$747

Submit the completed team registration form by March 25, 2019. Make checks payable to:

### West Virginia Envirothon Committee

Mail to: WVACD c/o Envirothon  
742 Airport Road  
Sutton, WV 26601

**\*You may also fax form to 304-263-4376, to the attention of Envirothon, or e-mail Heather at [hishman@epcd.us](mailto:hishman@epcd.us). All payments must be mailed to address above.**

The WV Envirothon Committee prohibits discrimination in its program on the basis of race, color, national origin, sex, religion, age, disability, political beliefs, and marital or family status. Persons with disabilities who require alternative means of communication or accommodations should contact the WV Envirothon Committee.

46