

Little Kanawha Conservation District

Board of Supervisors Meeting
May 7, 2019, 10:30 AM
Mill Run Ag Service Center, Parkersburg, WV

Attending were:

*** Supervisors Attending ♦ Supervisors by Conference Call**

Ivan Banks, Ritchie County
*Bob Buchanan, Wood County
Dexter Graham, Wood County
*Mike Nichols, Ritchie County
*Sam Sheets, Roane County
Thanh Ashman, Roane County
*Roger Shaver, Wirt County
*Roseann Adams, Wirt County
*Dale Cunningham, Calhoun County

Others attending or ♦ Others by Conference Call:

Kaitlyn Murphy, WVCA
Mikayla Hayes, LKCD
Jessica Nichols, WVCA

Call to order & Pledge of Allegiance

- Mike Nichols called the meeting to order at 10:30 a.m.
- Pledge led by Bob Buchanan and recited by all.

District Business

Minutes of Previous Meeting

Bob Buchanan made motion to approve as presented. Second by Sam Sheets. Majority approved. Motion carried.

Approval of Cooperators

Agreements – David Henrie, Wood County
John Hughes – Trustee, Roane County
Carl Straight, Wood County
Nicholas McPherson, Wood County
Larry Stephen, Wood County

Roger Shaver made motion to approve the new cooperators and second by Bob Buchanan. Majority approved. Motion carried.

Terminations – None

Correspondence – Non-Action Items – For Copy Upon Request

- LK RC&D Letter

- GVCD Quarterly Report
- USDA Soil Survey Letter
- Safety Certification – Walker Creek
- Safety Certification – Pullman

Report of Agencies and Others

LKCD Associate Supervisors Report

None

Field Staff Report, NRCS, District, Jason Crislip

None

Field Staff Report, WVCA

None

Active District Committee Reports

Envirothon Committee – Competition next year will be at Canaan Valley.

Ag Enhancement Committee –

- Letter of Request – *Motion by Bob Buchanan to send a Letter of Request in the amount of \$17,200 for Emergency AgEP funds. Second by Roseann Adams. Majority approved. Motion carried.*
- Approval of Emergency Applications – *Sam Sheets moved to approve applications presented. Second by Roger Shaver. Majority approved. Motion carried.*

Emergency AgEP Reseeding Program

District: LKCD

Producer Name	County	Farm #	Tract #	Field #	Acres	\$ Amount (\$60/acre)
David M. Henrie	Wood	693	789	1,2	32.627	\$1,957.62
Josh Hilvers	Ritchie	37	653	1,2,6	6.935	\$416.10
Jeff Starcher	Calhoun	-	-	1,2	2.159	\$129.54
Josh Radabaugh	Ritchie	808	8174	2,16	12.242	\$734.52
Stacey Wyr	Wirt	-	341	13,14	17.48	\$1,048.80
Larry Gardner	Wood	99	668	1,2,5	20.544	\$1,232.64
Roy Bartlett	Ritchie	33	833	1,5,8,9,12	13.697	\$821.82
Darrell Frazier	Wirt	384; 87	479; 209	1,2,4,6,10&8	6.813	\$408.78
Pamela Exline	Wirt	72, (non-listed)	216, (non-listed)	6; 7, other	5.67	\$340.20
Amber Cross	Wood	-	-	1	4.45	\$267.00
Mike Murphy	Wood	246	173	1,3, #2	5.867	\$352.02
Robert E. Monroe	Wood	501	525	5,6	4.914	\$294.84
Eric Kent	Wood	415	381	1,3,5	2.541	\$152.46
Mark Melrose	Wood	425	398	6, 5&11	5.904	\$354.24
L. Todd Cole	Roane	1974	4512	6	4.309	\$258.54
Ivan Banks	Ritchie	20	36	3,4,5	26.183	\$1,570.98

Orville Strickland	Roane	1996	4536	1 through 8	15.528	\$931.68
Adam L. Nichols	Roane	974	1030	5,7	8.658	\$519.48
Paul Harold Jr.	Roane	454	1378	4	4.151	\$249.06
Delores Longfellow	Roane	684	1451	12, barns	6.485	\$389.10
Jason Shamblin	Roane	496; 1597	1249; 4114	2,4,6	15.84	\$950.40
Donald McVey	Wirt	522	98	4&5	12.293	\$737.58
Donald Westfall	Wood	-	-	1,2,3	7.528	\$451.68
Suzanne B. Dietz	Wood	746	828	1,2,3	3.513	\$210.78
Matthew Roberts	Roane	282; 1757	219; 202	1,2,3	21.133	\$1,267.98
Andrew Myers	Roane	2094	1264	2	5	\$300.00
					272.464	\$16,347.84

District Manager, Jessica Nichols

- Talked about list of acronyms.
- Talked about Wetland Day. Roger Shaver mentioned that the Soils Trailer was at the Wetland Day. Sam Sheets stated that the WV Soil's Trailer was at the Geary School as well.

WVCA Report, Kim Fisher

Unable to attend.

Closing Activities

Calendar of Events

May 14th – District Board Meeting – Wood Co. - Mill Run Ag Center, 9:30 a.m. – Lunch on your own followed by farm tour

May 27th – Office Closed – Memorial Day Holiday

June 11th – District Board Meeting – Ritchie Co. - Ellenboro Municipal Building, 9:30 a.m. – Lunch on your own followed by farm tour

June 20th – WV Statehood Day – State Holiday – State Offices Closed

July 9th – WV SCC Meeting

July 11th – District Board Meeting – Wirt Co. - Sportsman Park, 9:30 a.m. Covered Dish Luncheon followed by farm tour

July 15th & 16th – WVCA Quarterly Meeting – Highlands Event Center, Triadelphia

August 13th – District Board Meeting – Roane Co. – Spencer Service Center. 9:30 a.m. – Lunch on your own followed by farm tour

September 13th – District Board Meeting – Calhoun Co. – details to follow

October 21st & 22nd -WVACD Quarterly Meeting – Flatwoods

Motion to Adjourn was made by Bob Buchanan and second by Roger Shaver. Majority approved. Motion carried. Meeting adjourned at 10:55 p.m.

These minutes respectfully submitted by Roseann Adams, LKCD Secretary and Jessica Nichols, Recorder.

Mike Nichols, LKCD Chairman

Roseann Adams, LKCD Secretary

Date approved: _____



Parkersburg (Wood County)
District Headquarters
Telephone: 304-422-9088
Fax: 304-422-9086
E-mail: lkcd@wvca.us

Serving the Counties of:
Calhoun
Ritchie
Roane
Wirt
Wood

Little Kanawha
Conservation District
91 Boyles Lane
Parkersburg, West Virginia 26104

May 7, 2019

Brian Farkas, Executive Director
WV Conservation Agency
1900 Kanawha Blvd. East
Charleston, WV 25305

Dear Mr. Farkas:

Please accept this Letter of Request (LOR) for funds as follows:

Conservation District:	Little Kanawha Conservation District
Amount Requested:	\$17,200.00
Project or Purpose:	AgEP Emergency Program
Date of Board Approval:	May 7, 2019
Letter of Request ID#	8222
Agreement #	1024-08

If you have any questions, please contact the Conservation District office.

BY _____
Michael Nichols

TITLE Chairman

DATE May 7, 2019

For Land's Sake

Emergency AgEP Reseeding Program

District: LKCD

Producer Name	County	Farm #	Tract #	Field #	Acres	\$ Amount (\$60/acre)
David M. Henrie	Wood	693	789	1,2	32.627	\$1,957.62
Josh Hilvers	Ritchie	37	653	1,2,6	6.935	\$416.10
Jeff Starcher	Calhoun	-	-	1,2	2.159	\$129.54
Josh Radabaugh	Ritchie	808	8174	2,16	12.242	\$734.52
Stacey Wyrer	Wirt	-	341	13,14	17.48	\$1,048.80
Larry Gardner	Wood	99	668	1,2,5	20.544	\$1,232.64
Roy Bartlett	Ritchie	33	833	1,5,8,9,12	13.697	\$821.82
Darrell Frazier	Wirt	384; 87	479; 209	1,2,4,6,10&8	6.813	\$408.78
Pamela Exline	Wirt	72, (non-listed)	216, (non-listed)	6; 7, other	5.67	\$340.20
Amber Cross	Wood	-	-	1	4.45	\$267.00
Mike Murphy	Wood	246	173	1,3, #2	5.867	\$352.02
Robert E. Monroe	Wood	501	525	5,6	4.914	\$294.84
Eric Kent	Wood	415	381	1,3,5	2.541	\$152.46
Mark Melrose	Wood	425	398	6, 5&11	5.904	\$354.24
L. Todd Cole	Roane	1974	4512	6	4.309	\$258.54
Ivan Banks	Ritchie	20	36	3,4,5	26.183	\$1,570.98
Orville Strickland	Roane	1996	4536	1 through 8	15.528	\$931.68
Adam L. Nichols	Roane	974	1030	5,7	8.658	\$519.48
Paul Harold Jr.	Roane	454	1378	4	4.151	\$249.06
Delores Longfellow	Roane	684	1451	12, barns	6.485	\$389.10
Jason Shamblin	Roane	496; 1597	1249; 4114	2,4,6	15.84	\$950.40

Producer Name	County	Farm #	Tract #	Field #	Acres	\$ Amount (\$60/acre)
Donald McVey	Wirt	522	98	4&5	12.293	\$737.58
Donald Westfall	Wood	-	-	1,2,3	7.528	\$451.68
Suzanne B. Dietz	Wood	746	828	1,2,3	3.513	\$210.78
Matthew Roberts	Roane	282; 1757	219; 202	1,2,3	21.133	\$1,267.98
Andrew Myers	Roane	2094	1264	2	5	\$300.00
					272.464	\$16,347.84

Acronym

AC	Area Conservationist
AFO	Animal Feeding Operation
BMP	Best Management Practice
CAFO	Concentrated Animal Feeding Operation
CCD	Capitol Conservation District
CD	Conservation District
CED	County Executive Director
CREP	Conservation Reserve Enhancement Program
CRP	Conservation Reserve Program
CSP	Conservation Stewardship Program
CWA	Clean Water Act
DC	District Conservationist
EA	Environmental Assessment
ECD	Elk Conservation District
EIS	Environmental Impact Statement
EOI	Expression of Interest
EPA	Environmental Protection Agency
EPCD	Eastern Panhandle Conservation District
EQIP	Environmental Quality Incentives Program
EWP	Emergency Watershed Program
FEMA	Federal Emergency Management Agency
FFA	Future Farmers of America
FIP	Forestry Incentives Program
FO	Field Office
FOIA	Freedom of Information Act
FSA	Farm Service Agency
FY	Fiscal Year
GCD	Guyan Conservation District
GRP	Grasslands Reserve Program
GVCD	Greenbrier Valley Conservation District
HEL	Highly Erodible Land
HELC	Highly Erodible Land Conservation
HUA	Heavy Use Area
IPM	Integrated Pest Management
IT	Information Technology
LKCD	Little Kanawha Conservation District
LOA	Land Owner Assistance
LWG	Local Work Group
MCD	Monongahela Conservation District
MOU	Memorandum of Understanding
NACD	National Association of Conservation Districts
NMP	Nutrient Management Plan
NNIS	Non-Native Invasive Species
NPCD	Northern Panhandle Conservation District
NRCS	Natural Resources Conservation Service
O&M	Operation and Maintenance
PLT	Project Learning Tree

Acronym

PVCD	Potomac Valley Conservation District
RC&D	Resource Conservation and Development
RD	Rural Development
SCD	Southern Conservation District
SF	State Forest
SIP	Stewardship Incentives Program
TMDL	Total Maximum Daily Load
TVCD	Tygarts Valley Conservation District
UOCD	Upper Ohio Conservation District
USACE	US Army Corps of Engineers
USDA	US Department of Agriculture
USFS	US Forest Service
USFWS	US Fish and Wildlife Service
USGS	US Geological Survey
WC	Wetland Conservation
WCD	Western Conservation District
WFCD	West Fork Conservation District
WHIP	Wildlife Habitat Incentives Program
WIP	Watershed Implementation Plan
WMA	Wildlife Management Area
WREP	Wetland Reserve Enhancement Program
WRP	Wetlands Reserve Program
WVACD	WV Association of Conservation Districts
WVCA	WV Conservation Agency
WVCEC	WV Conservation Education Council
WVDA	WV Department of Agriculture
WVDE	WV Department of Education
WVDEP	WV Department of Environmental Protection
WVDNR	WV Division of Natural Resources
WVDOF	WV Division of Forestry
WVDOH	WV Department of Highways
WVDOT	WV Department of Transportation
WVEEA	WV Environmental Education Association
WVFA	WV Forestry Association
WVSOS	WV Save Our Streams
WVU	WV University

If you would like copies of the documentation in this folder, please sign below.

Non Action Items
LK RC&D Letter

GVCD Quarterly Report

USDA Soil Survey Letter

Safety Certification – Walker Creek

Safety Certification – Pullman

LITTLE KANAWHA RC&D

Resource Conservation & Development Council

1014 Volcano Road
Waverly, WV 26184-9777

Phone: (304) 679-3639
Email: info@lkrcd.com



April 23, 2019

Little Kanawha Conservation District

Dear Conservation District Supervisors,

Little Kanawha Resource Conservation & Development Council would like to thank you for your support of our council and the project areas that it serves.

The Council continues to serve our rural areas and larger communities to enhance our part of West Virginia with support of land and water projects.

Our Project Sharing program is a big success and through that, we are able to assist many organizations that assist children, youth, adults and seniors, the ill, needy and the underserved of our nine-county project area. This is an important program that helps fill important needs for people of all ages. If non-profits in your area might benefit from Project Sharing, please send them our way to find out about this program. The Project Sharing warehouse is at 2309 Gihon Road, Parkersburg, WV, and is open 9 AM to 2 PM on Wednesdays.

We greatly appreciate your continued support and working with you as we help build the future. Be sure to visit our Little Kanawha RC&D facebook page, and our Project Sharing (look for the orange flower) facebook page.

Respectfully,

Dick Waybright

Dick Waybright, Chairman

D. J. Allen

D. J. Allen, Coordinator

Little Kanawha RC&D

Mission Statement:

“Assist local communities to manage their natural resources in ways that improve the area’s economy and environment.”

Vision Statement:

“Leading our communities through partnerships to make things happen.”



Greenbrier Valley Conservation District

Quarterly Report Spring 2019

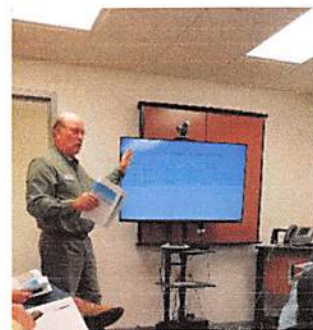
Январь, Февраль, Март

Agricultural Enhancement / Grassland Program

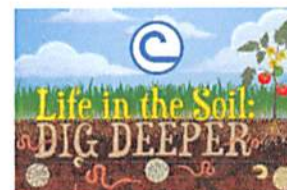
- Ag Enhancement contracts are being completed and AgEP cost-share payments for the quarter totaled \$10,056.46 for lime, pasture division fence and water systems. Deadlines for FY19 contract completion may be extended for lime due to the extremely wet weather and resulting muddy conditions. Applications for FY20 funding will be taken in July.

Education / Outreach

- The GVCD hosted a Legislative Briefing on January 3, 2019. The purpose of this gathering was to share information about the district and to demonstrate that conservation truly is a wise investment, both for the future of our natural resources and for its stimulus to our local economy. By building a working relationship with our representatives, we hope that conservation will remain one of their top priorities.
- Supervisors Gary Sawyers, Carolyn Miller, and Avery Atkins attended AgDay at the Capitol and the Legislative Breakfast hosted by the WVACD. Frank Masters was honored by the House with a citation ceremony and by the Senate by Resolution for being named WV Conservation Farm of the Year in 2018. We owe a special thanks to Delegate Jeff Campbell and Senator Stephen Baldwin for making these arrangements.



- The GVCD approved Junior Conservation Camp sponsorships for two students from each county in the district.
- Two Century Farms will be recognized this year.
- The Conservation Poster Contest is also underway, with information packets direct mailed and/or emailed to all public and private schools in the district, as well as 4-H leaders and FFA advisors. Information was also published in all district newspapers and online. Judging will take place in April and awards given out in May. Lynn Woods also made a presentation to Seneca Trail Christian Academy upon request.
- The GVCD approved sponsorship for two farmers from each county in the district to attend the Appalachian Grazing Conference. In addition, Frank Masters, winner of the WV Conservation Farm of the Year title, was sponsored by the District and recognized at the Conference. Special thanks to Joe Gumm for arranging the introduction. Grass Tech, Barry Level also attended the AGC.
- In cooperation with Southern CD and NRCS, a Land Judging and Homesite Evaluation Contest is being planned for May 8, 2019 at the Plant Materials Center in Alderson. This will also serve as the regional competition for the Southeastern FFA region.
- Consideration for Conservation Farm Contest nominees has begun and county and district winners will be selected in April/May.
- Donations were approved to assist with cost for WVU Extension dinner meetings in each county in the district.
- District will participate in the 2nd annual WV Farm Show in May and Farmers Day activities in June.
- Plans for the Annual Legislative and Awards Banquet are underway for September 26, 2019. Save the date!



Don't forget! The GVCD is now on Facebook! Because social media has become a primary source of information for a vast number of people, the GVCD has developed a Facebook page as another means of communication about our efforts and activities. We will also share relevant information from our partners. You can find us by entering "Greenbrier Valley Conservation District" in your Facebook search bar. Like and follow our page for the most up-to-date information!

Watershed Projects / Programs:

- New agreements have been reached with our OMR sponsors that include a 10% increase in contribution. Special thanks to Brian Farkas for visiting the sponsors and negotiating the new agreements.

- GVCD 2019-01-11 SPRP MOA WSS Memorial Park was completed at a cost of \$2,250.00 to remove a 100% blockage.

319 Water Quality Program

- \$42,806.84 was disbursed in payments for 319 projects this quarter.
- By means of an AGO grant, we are working with the City of White Sulphur Springs and other local charities to develop a plan to restore Howards Creek upstream of the flood control channel. The geomorphic survey and design are both completed and funding is being sought.
- We are now working on the Wades Creek Stream Stabilization & Resiliency Project which will serve as a demonstration and educational project. Project total is \$293,136 and funds are being provided by USF&W. Two contracts are planned with the first being for stream restoration and the second being for trail and bridge replacement. Target time-line for first job showing is mid-April.
- We are continuing with implementation of Indian Creek watershed projects including exclusion fencing and pasture division fencing.
- We are working to implement Chesapeake Bay funds in the James River Watershed.
- We are revising several watershed based plans that have outlived their lifespan and still require additional work.

Other News / Administrative

- Annual Policy review was held changes were approved in February.
- CDO Personnel Plan and CDO Budget for FY20 were approved and submitted.

Respectfully submitted,

Lynn Woods

District Manager
Greenbrier Valley Conservation District
179 Northridge Drive
Lewisburg, WV 24901304-645-6173





United States Department of Agriculture
Natural Resources Conservation Service
1550 Earl Core Road, Suite 200
Morgantown, WV 26505

Phone: (304) 284-7540
Fax: (855) 857-6448

April 10, 2019

Mr. Mike Nichols, Chairman
Little Kanawha Conservation District
91 Boyles Lane
Parkersburg, WV 26104

Dear Mr. Nichols,

Annually, on October 1, NRCS publishes updated soil survey information to the web soil survey based on ongoing soil survey improvement projects. The web soil survey is the agency's location of official soil survey information. As a result of this work, updates may alter map unit names in the soil survey legend and subsequently various interpretations such as important farmland classification. Our records indicate that all of the counties in the Little Kanawha Conservation District have approved locally important farmland soils.

On September 3, 2013 NRCS approved the locally important farmland lists provided by Mr. Floyd Hodge, Chairperson for the Little Kanawha Conservation District. This letter is to inform you that there have been changes to the all of the county soil survey legends since the date the lists was approved. These changes are important because current lists as documented in the web soil survey may be inconsistent with the originally approved list. **These changes reflect closely the names of the original lists and will not affect their classification as locally important.** The originally approved list is on the left and the current map unit reflecting the name change is on the right.

County	Approved MU Symbol	Approved Locally Important - MU Name_Old In Official Letter	Updated MU Symbol	Updated Locally Important MUName_New In NASIS
Calhoun and Roane	UgD3	Upshur-Gilpin complex, 15 to 25 percent slopes, severely eroded	UgD3	Upshur-Gilpin silt loams, 15 to 25 percent slopes, severely eroded
Ritchie	UgD3	Upshur-Gilpin complex, 20 to 30 percent slopes, severely eroded	UgD3	Upshur-Gilpin complex, 15 to 25 percent slopes, severely eroded
Wirt and Wood	UgD3	Upshur-Gilpin complex, 20 to 30 percent slopes, severely eroded	UgD3	Upshur-Gilpin silt loams, 15 to 25 percent slopes, severely eroded
	UgE	Upshur-Gilpin complex, 30 to 40 percent slopes	UgE	Upshur-Gilpin silt loams, 25 to 35 percent slopes



[illegible]

1. The first step in the process of the investigation is to identify the problem or the question to be investigated.	2. The second step is to collect data or information relevant to the problem or question.	3. The third step is to analyze the data or information to identify patterns or relationships.	4. The fourth step is to draw conclusions or make predictions based on the analysis.	5. The fifth step is to communicate the results of the investigation to others.
--	---	--	--	---

Please consider recording this update in your official records to avoid any confusion that could occur due to the changes. Also, please remember to review annually the web soil survey for potential updates in the *Prime and Other Important Farmland* soils report. You may wish to share this information with those whom these changes may impact.

If you have any questions or comments, please contact Jared Beard, State Soil Scientist at 304-284-7597 or jared.beard@usda.gov.

Sincerely,



NICOLE VIARS

Acting State Conservationist

Cc: Jason Crislip, NRCS District Conservationist, Spencer, WV
Jennifer Randolph, Roane Farmland Protection Board, jenrand@commission.state.wv.us
Damarys Mortenson, NRCS, Acting ASTC-FO, Beckley, WV
Laura Smith, NRCS, ASTC – Programs, Morgantown, WV
Matt Oliver, NRCS, Easement Specialist, Morgantown, WV
Aron Sattler, NRCS, Resource Soil Scientist, Morgantown, WV



United States Department of Agriculture
Natural Resources Conservation Service
1550 Earl Core Road, Suite 200
Morgantown, WV 26505
(304) 284-7540 (Phone)
(304) 284-4839 (Fax)

April 18, 2019

Delbert G. Shriver, PE
Senior Engineer/Acting Program Manager
DEP DWWM/EE, Dam Safety
2031 Pleasant Valley Road
Fairmont, West Virginia 26554

Re: Transmittal of Safety Certification
Walker Creek 1 (Mountwood Park)

Dear Delbert:

I have attached the required certification form for the biennial safety inspection of the above dam.

The dam was found to be operating properly with no conditions requiring correction, other than the ones currently being serviced. Minor maintenance items were noted for the sponsors' attention.

Sincerely,

L. Andrew Deichert, P.E.
State Conservation Engineer

Encl: 1) Engineer's Inspection Verification Statement
2) Annual Dam Inspection Checklist with Attachments

cc: w/enclosures

Little Kanawha Conservation District, Parkersburg, WV
Donny Dodd, Jr., Resource Conservation Engineer, NRCS, Beckley, WV
Brian Farkas, Executive Director, WVCA, Charleston, WV
Gene Saurborn, Assistant Division Director, WVCA, Morgantown, WV
Judith Lyons, Watershed Manager, WVCA, Charleston, WV
Kimberly Neal, Watershed Office Coordinator, WVCA, Summersville, WV

cc: w/o enclosure

Laura Smith, ASTC-Programs, NRCS, Morgantown, WV
Damarys Mortenson, Acting ASTC-Field Operations, NRCS, Beckley, WV
Jason Crislip, District Conservationist, NRCS, Parkersburg, WV

Helping People Help the Land

An Equal Opportunity Provider and Employer



OWNER'S ENGINEER INSPECTION VERIFICATION STATEMENT

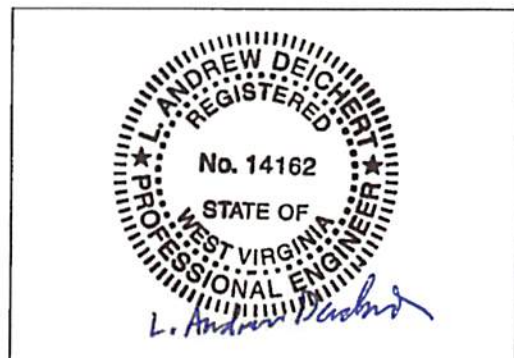
For Compliance with Dam Safety Rule 47CSR34-15.4.c

I hereby verify that I or an experienced engineer under my supervision, conducted a visual inspection of the Walker Creek 1 Dam (ID # 10707) and its appurtenances on March 28, 2019. The attached signed and sealed inspection report documents: 1) the current conditions as observed; 2) any maintenance items necessary to prolong safe functioning of the dam; 3) any conditions observed during the inspection which indicate that the dam has a serious problem* and 4) any conditions that will not allow proper operation of the dam during normal or maximum reservoir water level conditions.

L. Andrew Deichert
Signature

L. Andrew Deichert, PE
State Conservation Engineer
Printed Name and Title

4-18-2019
Date



*as defined in Section 2.56 of the Dam Safety Rule

Submit to:
DEP Dam Safety Section
601 57th Street SE
Charleston, WV 25304
DEPDamSafetyProgram@wv.gov

WATERSHED Walker Creek

COUNTY Wood

SPONSOR(S) Little Kanawha Conservation District
Wood County Parks & Recreation Commission
WVSCC

SITE NUMBER 1

NID # WV10707

HAZARD CLASS H

PURPOSE(S) OF DAM R (Recreation)

INSPECTION DATE 3/28/2019

WEATHER Sunny, Low 60s

ITEM	Y	N	N/A	REMARKS
1. General Conditions				
a. Alterations to Dam?		✓		
b. Alterations to ASW?		✓		
c. Recent high water marks?		✓		elevation
d. Fencing adequate?	✓			
e. Grass Cover adequate?	✓			
2. Upstream Slope				
a. Erosion?		✓		location
b. Cracks, settlements or bulges?		✓		location
c. Seepage or boils?		✓		estimated gpm location
d. Distinct Vegetation Change?		✓		elevation location
e. Vehicle ruts or animal trails?	✓			Evidence of foot traffic along toe; deer paths
f. Trees?		✓		
g. Rodent holes?		✓		number and locations
h. Adequate and sound riprap?			✓	
3. Downstream Slope				
a. Erosion?		✓		location
b. Cracks, settlements, & bulges?		✓		location
c. Seepage or boils?	✓			estimated gpm Wet location Wet area near right abutment
d. Distinct Vegetation Change?	✓			elevation Not surveyed location Wet area near right abutment
e. Vehicle ruts or animal trails?	✓			Deer trail
f. Trees?		✓		
g. Rodent holes?		✓		number and locations
h. Drains or wells flowing?			✓	estimated gpm
i. Adequate and sound riprap?			✓	
4. PSW Intake Structure concrete / metal				
a. Spalling, cracking, & scaling?		✓		Based on observation from embankment
b. Exposed reinforcement?		✓		Based on observation from embankment
c. Corrosion present?	✓			US Pedestal appears to have some rust
d. Manhole cover present?	✓			
e. Leakage?			✓	estimated gpm Unable to determine - not accessed
f. Trash rack adequate?	✓			
g. Inlet or trash rack obstructed?		✓		
h. Drawdown operative? closed / open			✓	Unable to determine - not operated
i. Ladder intact?	✓			
j. Pedestal securely fastened?	✓			(2) Based on observation from embankment
k. Stem bent?			✓	(2) Unable to determine - submerged
l. Stem guides operational?			✓	Unable to determine - not operated
m. Stem handwheel present?		✓		
n. Do metal parts require painting?	✓			US Pedestal appears to have some rust
5. Abutment Contacts				
a. Erosion, cracks, or slips?	✓			location Erosion from spring located along US & DS right abutments
b. Seepage?	✓			estimated gpm Wet location US & DS right abutments
c. Rock riprap gutters intact?			✓	
d. Trees encroaching?		✓		
6. Auxiliary Spillway				
a. Obstructions?		✓		
b. Erosion, cracks, or slips?		✓		location
c. Rodent holes?		✓		number and locations
d. Roads, vehicle ruts, or animal trails?	✓			Numerous animal trails throughout
e. Low areas or ditches?		✓		location
f. Seepage?		✓		estimated gpm location

WATERSHED Walker Creek

SITE NUMBER 1

DATE 3/28/2019

ITEM	Y	N	N/A	REMARKS
7. PSW Conduit concrete <input checked="" type="checkbox"/> metal <input type="checkbox"/>				tailwater elevation Not surveyed
a. PSW Outlet submerged?	<input checked="" type="checkbox"/>			If yes, depth? ~12" If no, depth of flow?
b. Spalling, cracking, & scaling?			<input checked="" type="checkbox"/>	Unable to determine at time of inspection - not accessed
c. Exposed reinforcement?			<input checked="" type="checkbox"/>	Unable to determine at time of inspection - not accessed
d. Joints displaced or offset?			<input checked="" type="checkbox"/>	Unable to determine at time of inspection - not accessed
e. Joint material lost?			<input checked="" type="checkbox"/>	Unable to determine at time of inspection - not accessed
f. Leakage?			<input checked="" type="checkbox"/>	Unable to determine at time of inspection - not accessed
g. Conduit misaligned?			<input checked="" type="checkbox"/>	Unable to determine at time of inspection - not accessed
8. Impact Basin <input checked="" type="checkbox"/> Plunge Pool <input type="checkbox"/>				
a. Spalling, cracking, & scaling?		<input checked="" type="checkbox"/>		
b. Exposed reinforcement?		<input checked="" type="checkbox"/>		
c. Joints displaced or offset?		<input checked="" type="checkbox"/>		
d. Joint material lost?	<input checked="" type="checkbox"/>			Caulking between PSW pipe and impact basin deteriorating
e. Joints leak?		<input checked="" type="checkbox"/>		
f. Dissipater deteriorating?		<input checked="" type="checkbox"/>		
g. Dissipater clean of debris?	<input checked="" type="checkbox"/>			
h. Toe drains visible?				Left? Yes <input checked="" type="checkbox"/> No <input type="checkbox"/> N/A <input type="checkbox"/> Right? Yes <input checked="" type="checkbox"/> No <input type="checkbox"/> N/A <input type="checkbox"/>
i. Toe drain animal guards in place?				Left? Yes <input checked="" type="checkbox"/> No <input type="checkbox"/> N/A <input type="checkbox"/> Right? Yes <input checked="" type="checkbox"/> No <input type="checkbox"/> N/A <input type="checkbox"/>
j. Toe drains damaged?				Left? Yes <input type="checkbox"/> No <input checked="" type="checkbox"/> N/A <input type="checkbox"/> Right? Yes <input type="checkbox"/> No <input checked="" type="checkbox"/> N/A <input type="checkbox"/>
k. Left Toe drain submerged?		<input checked="" type="checkbox"/>		If no, estimated flow (gpm) No flow at time of inspection
l. Right Toe drain submerged?		<input checked="" type="checkbox"/>		If no, estimated flow (gpm) No flow at time of inspection
m. Earth erosion?	<input checked="" type="checkbox"/>			Hole at back wall of impact basin; foot paths around impact basin
n. Adequate and sound riprap?	<input checked="" type="checkbox"/>			
o. Outlet channel obstructed?	<input checked="" type="checkbox"/>			Sediment deposition located DS where trib enters outlet channel
9. Reservoir at <input checked="" type="checkbox"/> above <input type="checkbox"/> below <input type="checkbox"/> normal pool <input type="checkbox"/>				water surface elevation Not surveyed
a. Buildings in floodpool?		<input checked="" type="checkbox"/>		If yes, provide number, location, and first floor elevation in remarks section
b. Slips or erosion on banks?	<input checked="" type="checkbox"/>			location 1 eroded area at toe of embankment; 1 eroded area at ASW inlet
c. Debris?		<input checked="" type="checkbox"/>		If yes, type
d. Unsecured boats/docks?		<input checked="" type="checkbox"/>		
e. Sediment deposits?	<input checked="" type="checkbox"/>			location See photo
10. Instruments				
a. Structure instrumented?			<input checked="" type="checkbox"/>	If yes, type
b. Monitoring performed?			<input checked="" type="checkbox"/>	
11. Development				
a. New development upstream of dam?		<input checked="" type="checkbox"/>		
b. New development downstream of dam?		<input checked="" type="checkbox"/>		
c. EAP plan and mapping adequate?		<input checked="" type="checkbox"/>		Revised 9/16/2013

REMARKS: 8d The deteriorating caulk around PSW pipe in the impact basin needs to be addressed.

8h/i/j/k/l Both left and right 6" toe drains are visible. Animal guards in place and there was no flow at the time of the inspection. All four of the 4" basin drains (2 left and 2 right) are submerged. Unable to determine if the basin drains are damaged and if they are damaged.

8m The hole located at the back of the impact basin remains unchanged since last year.

Cellular service available at site.

NRCS ENGINEER

PATRICIA MITCHELL

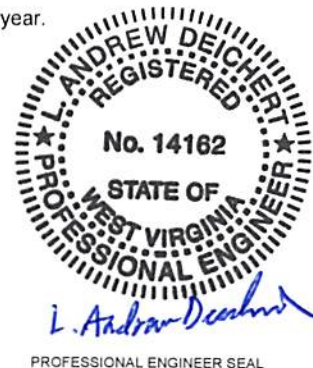
Digitally signed by PATRICIA MITCHELL
Date: 2019.04.03 10:17:03 -04'00'

DATE

SIGNATURE

L. Andrew Decker
NRCS State Conservation Engineer

DATE 4/18/2019



PROFESSIONAL ENGINEER SEAL

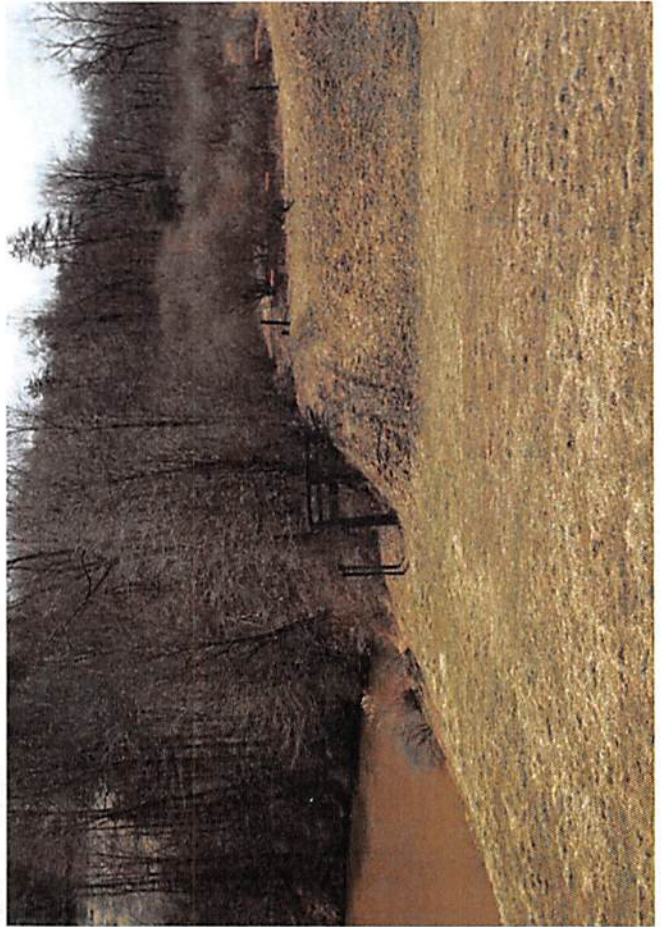
WALKER CREEK DAM
2019 ANNUAL DAM INSPECTION



ASW



ASW - OUTLET



ASW - INLET



ASW - FENCE ALONG TOP OF OUTSLOPE

WALKER CREEK DAM
2019 ANNUAL DAM INSPECTION



ASW - OUTLET



HOLE LOCATED AT BACK WALL OF IMPACT BASIN



ASW - OUTLET



ASW - ATV TRACKS AT US OUTSLOPE

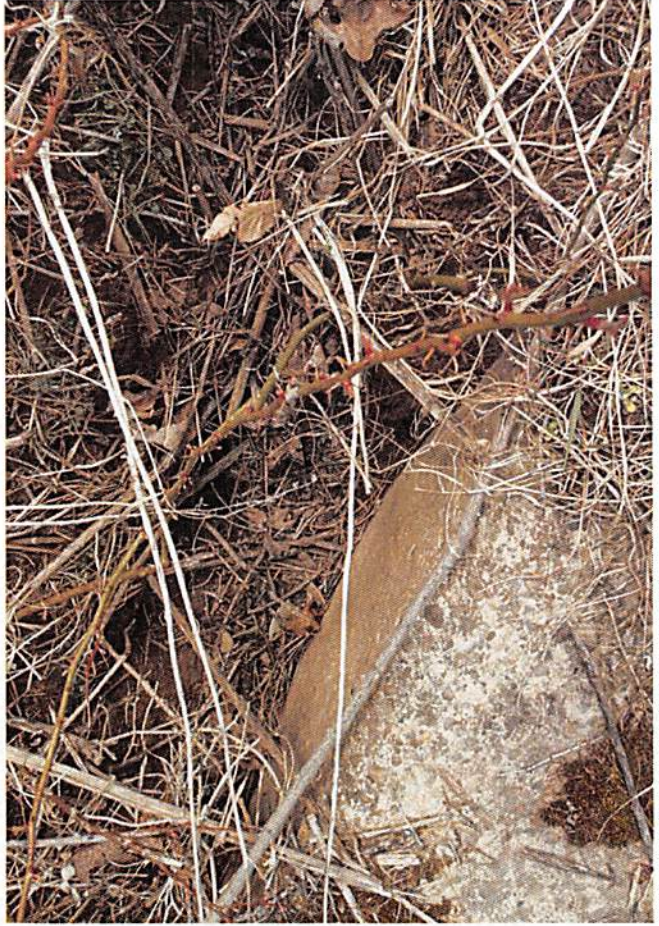
WALKER CREEK DAM
2019 ANNUAL DAM INSPECTION



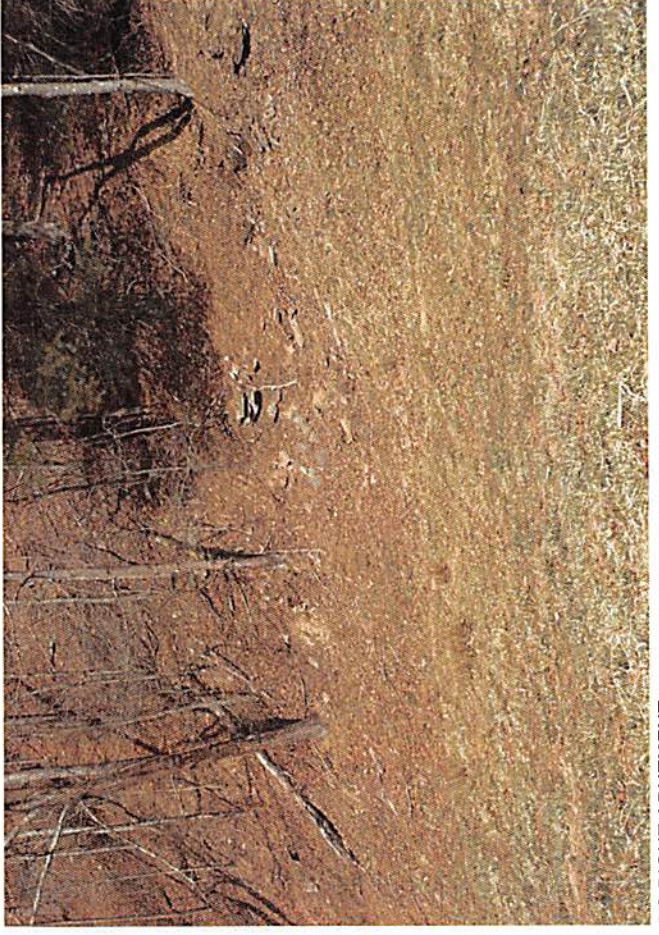
DS LEFT ABUTMENT



DS RIGHT ABUTMENT



HOLE AT BACK OF IMPACT BASIN



DS RIGHT ABUTMENT

WALKER CREEK DAM
2019 ANNUAL DAM INSPECTION



DS RIGHT ABUTMENT & WET AREA



DS SLOPE



DS RIGHT ABUTMENT



DS SLOPE

WALKER CREEK DAM
2019 ANNUAL DAM INSPECTION



DS SLOPE - WET AREA



ERODED AREA AT ASW INLET



DS SLOPE - EROSION

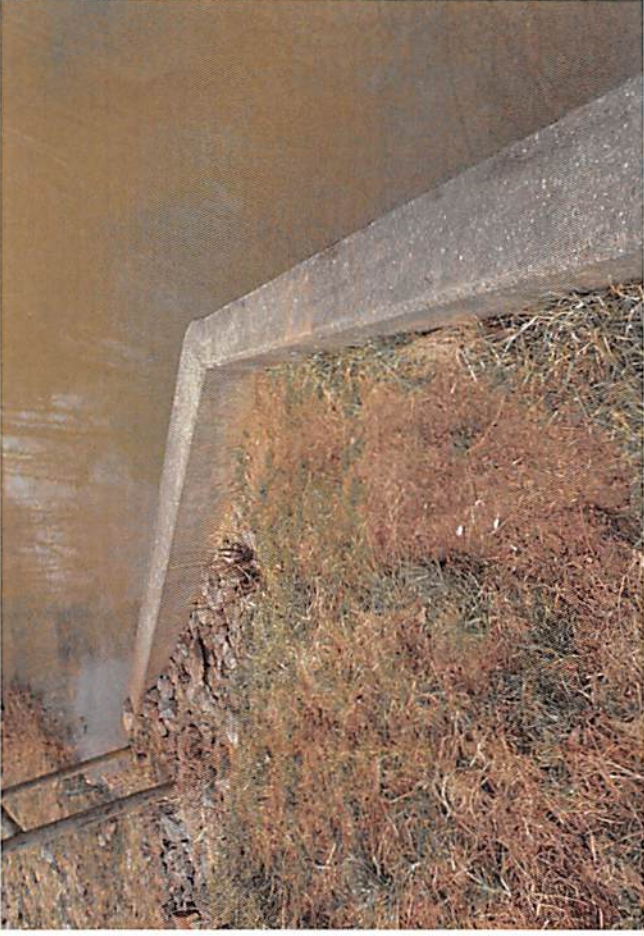


DS SLOPE - WET AREA

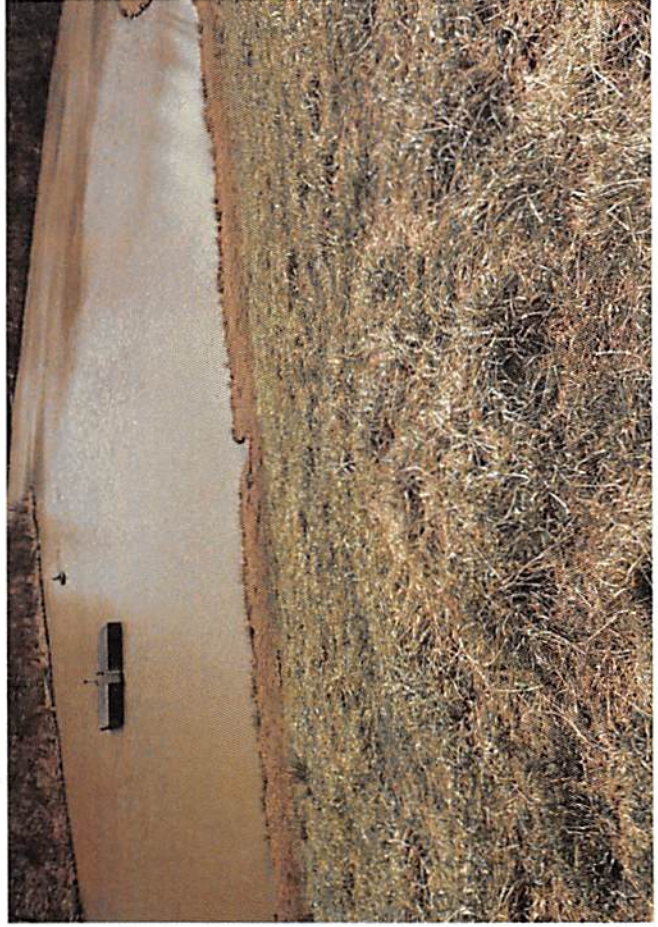
WALKER CREEK DAM
2019 ANNUAL DAM INSPECTION



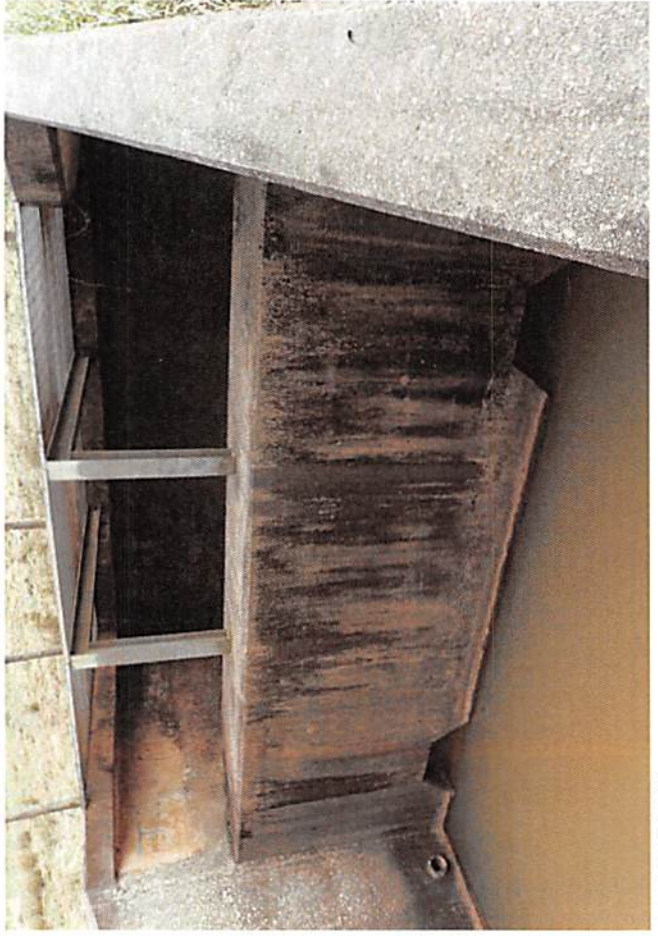
IMPACT BASIN



IMPACT BASIN - FOOT PATH



RESERVOIR & ERODED AREA AT TOE OF US SLOPE



IMPACT BASIN

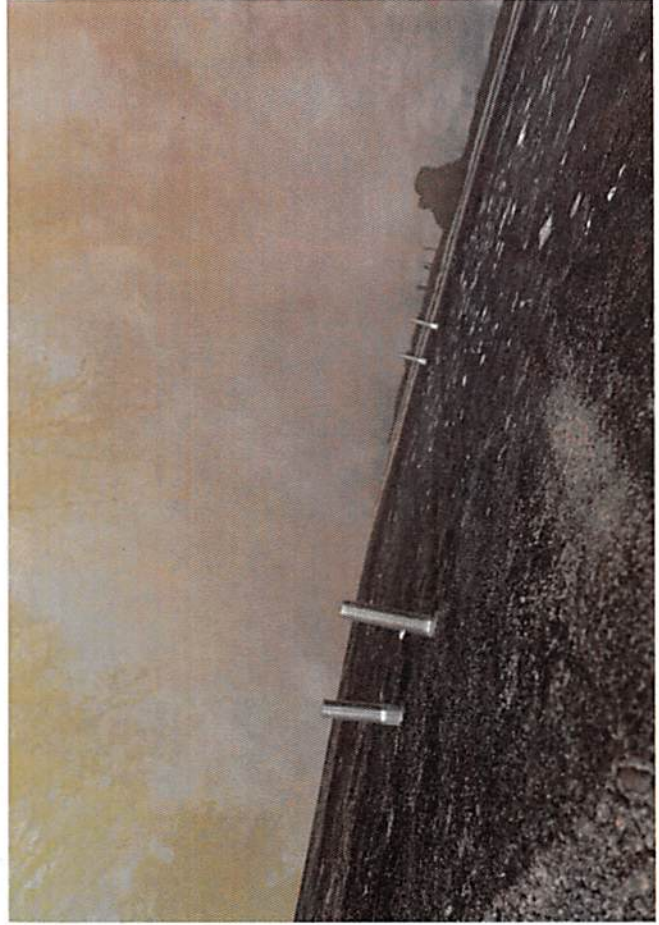
WALKER CREEK DAM
2019 ANNUAL DAM INSPECTION



LEFT 6" TOE DRAIN



PSW



ANCHOR BOLTS



OUTLET CHANNEL

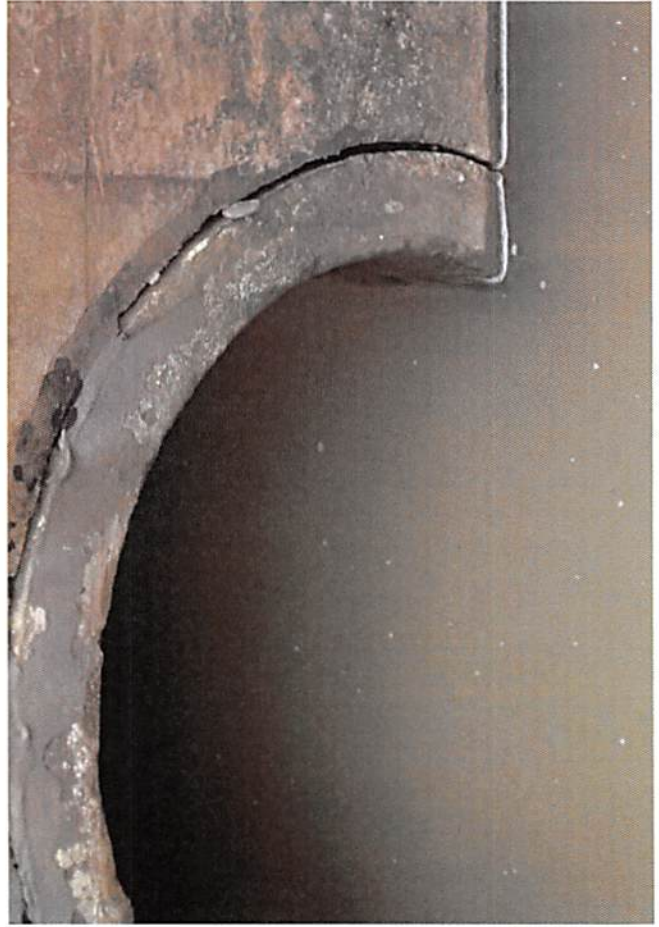
WALKER CREEK DAM
2019 ANNUAL DAM INSPECTION



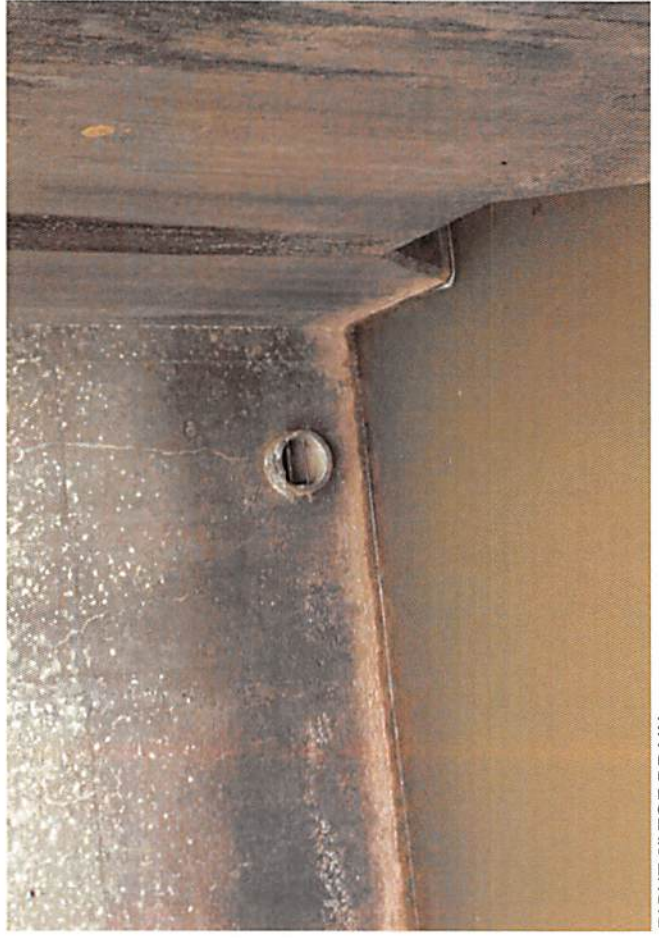
DETERIORATED CAULK AT PSW



RESERVOIR

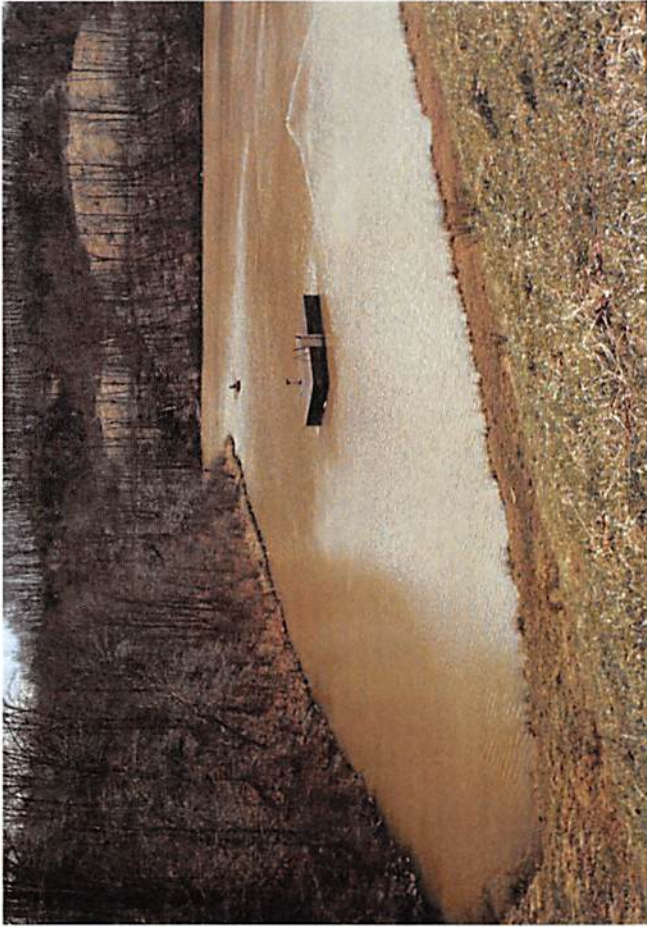


DETERIORATED CAULK AT PSW

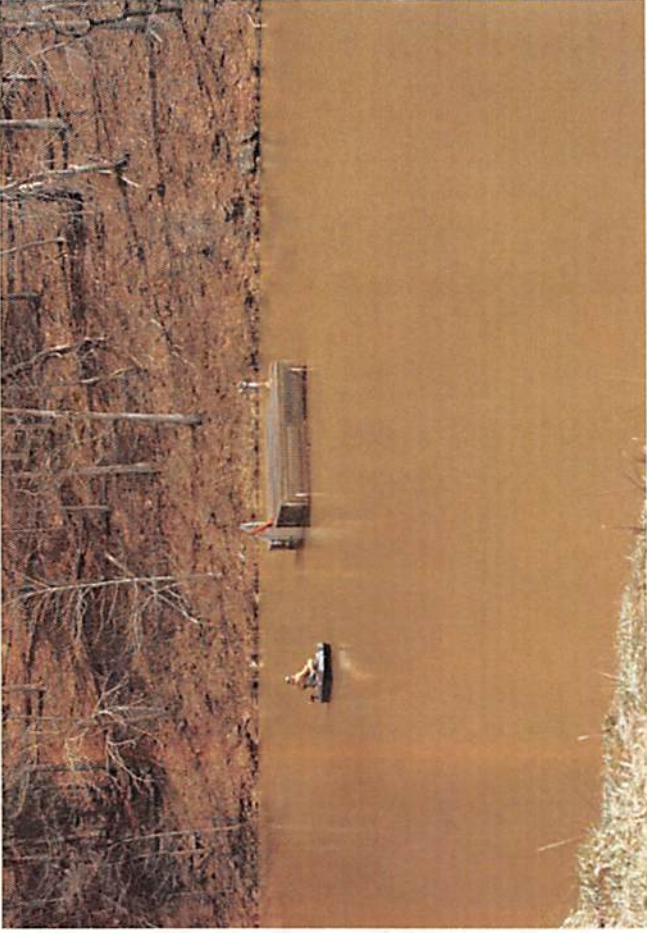


RIGHT 6" TOE DRAIN

WALKER CREEK DAM
2019 ANNUAL DAM INSPECTION



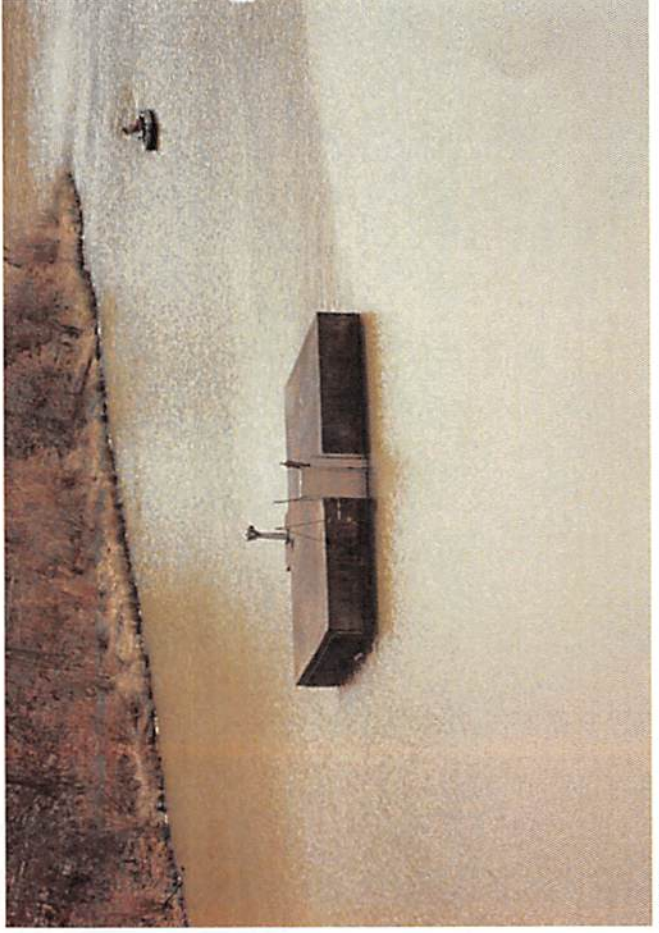
RESERVOIR & RISER



RESERVOIR & RISER



RESERVOIR & US SLOPE



RISER

WALKER CREEK DAM
2019 ANNUAL DAM INSPECTION



TOP OF DAM



TOP OF DAM



SEDIMENT DEPOSITION



VEHICLE RUT ON TOP OF DAM

WALKER CREEK DAM
2019 ANNUAL DAM INSPECTION



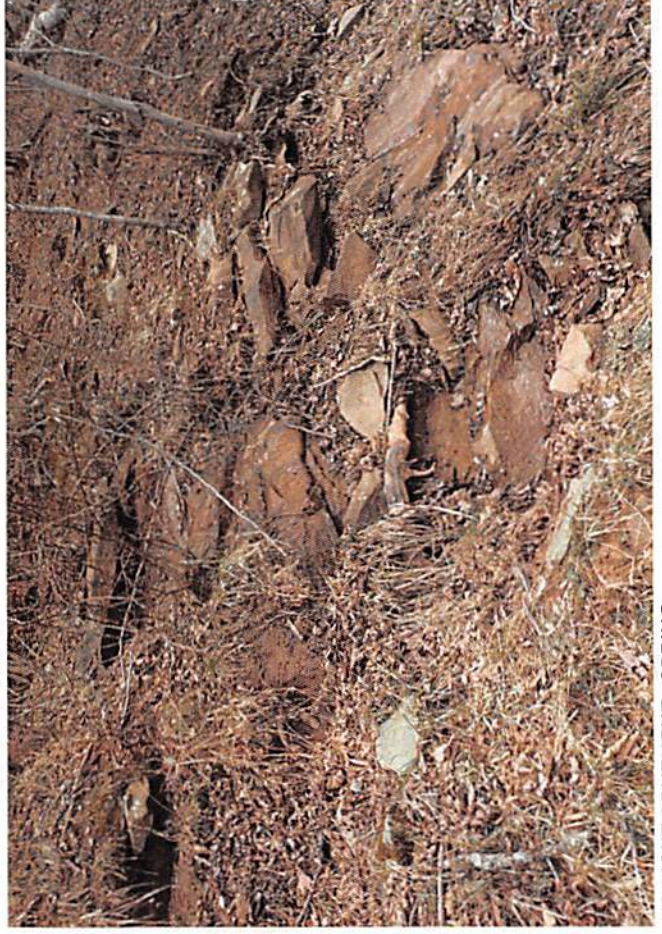
US RIGHT ABUTMENT



US RIGHT ABUTMENT - SPRING



US RIGHT ABUTMENT



US RIGHT ABUTMENT - SPRING

WALKER CREEK DAM
2019 ANNUAL DAM INSPECTION



US SLOPE



DIVERSION AT TOE OF DS SLOPE



RIGHT ABUTMENT - EROSION FROM SPRING



DS OF EMBANKMENT



United States Department of Agriculture
Natural Resources Conservation Service
1550 Earl Core Road, Suite 200
Morgantown, WV 26505
(304) 284-7540 (Phone)
(304) 284-4839 (Fax)

April 25, 2019

Delbert G. Shriver, PE
Senior Engineer/Acting Program Manager
DEP DWWM/EE, Dam Safety
2031 Pleasant Valley Road
Fairmont, West Virginia 26554

Re: Transmittal of Safety Certification
Pullman 1

Dear Delbert:

I have attached the required certification form for the biennial safety inspection of the above dam.

The dam was found to be operating properly with no conditions requiring correction, other than the ones currently being serviced. Minor maintenance items were noted for the sponsors' attention.

Sincerely,

L. Andrew Deichert, P.E.
State Conservation Engineer

Encl: 1) Engineer's Inspection Verification Statement
2) Annual Dam Inspection Checklist with Attachments

cc: w/enclosures

Little Kanawha Conservation District, Parkersburg, WV
Donny Dodd Jr., Resource Conservation Engineer, NRCS, Beckley, WV
Brian Farkas, Executive Director, WVCA, Charleston, WV
Gene Saurborn, Assistant Division Director, WVCA, Morgantown, WV
Judith Lyons, Watershed Manager, WVCA, Charleston, WV
Kimberly Neal, Watershed Office Coordinator, WVCA, Summersville, WV

cc: w/o enclosure

Laura Smith, ASTC-Programs, NRCS, Morgantown, WV
Damarys Mortenson, Acting ASTC-Field Operations, NRCS, Beckley, WV
Jason Crislip, District Conservationist, NRCS, Parkersburg, WV

Helping People Help the Land

An Equal Opportunity Provider and Employer



OWNER'S ENGINEER INSPECTION VERIFICATION STATEMENT

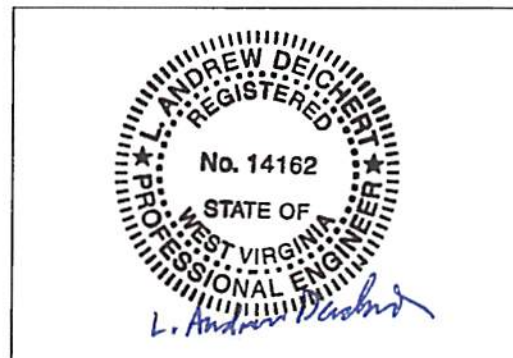
For Compliance with Dam Safety Rule 47CSR34-15.4.c

I hereby verify that I or an experienced engineer under my supervision, conducted a visual inspection of the Pullman 1 Dam (ID # 08502) and its appurtenances on March 28, 2019. The attached signed and sealed inspection report documents: 1) the current conditions as observed; 2) any maintenance items necessary to prolong safe functioning of the dam; 3) any conditions observed during the inspection which indicate that the dam has a serious problem* and 4) any conditions that will not allow proper operation of the dam during normal or maximum reservoir water level conditions.

L. Andrew Deichert
Signature

L. Andrew Deichert, PE
State Conservation Engineer
Printed Name and Title

4-25-2019
Date



*as defined in Section 2.56 of the Dam Safety Rule

Submit to:
DEP Dam Safety Section
601 57th Street SE
Charleston, WV 25304
DEPDamSafetyProgram@wv.gov

WATERSHED PullmanCOUNTY RitchieSPONSOR(S) Little Kanawha Conservation DistrictTown of PullmanWVSCCSITE NUMBER 1NID # WV08502HAZARD CLASS HPURPOSE(S) OF DAM C (Flood Control)INSPECTION DATE 3/28/2019WEATHER SUNNY, LOW 60's

ITEM	Y	N	N/A	REMARKS
1. General Conditions				
a. Alterations to Dam?		✓		
b. Alterations to ASW?		✓		
c. Recent high water marks?		✓		elevation
d. Fencing adequate?	✓			
e. Grass Cover adequate?		✓		recently excavated and placed material has not been seeded & mulched
2. Upstream Slope				
a. Erosion?		✓		location
b. Cracks, settlements or bulges?		✓		location
c. Seepage or boils?		✓		estimated gpm location
d. Distinct Vegetation Change?		✓		elevation location
e. Vehicle ruts or animal trails?		✓		
f. Trees?		✓		
g. Rodent holes?		✓		number and locations
h. Adequate and sound riprap?			✓	
3. Downstream Slope				
a. Erosion?		✓		location
b. Cracks, settlements, & bulges?		✓		location
c. Seepage or boils?		✓		estimated gpm location
d. Distinct Vegetation Change?		✓		elevation location
e. Vehicle ruts or animal trails?	✓			Deer path
f. Trees?		✓		
g. Rodent holes?	✓			number and locations (1) at DS toe right of PSW, (1) adjacent to PSW & right toe drain
h. Drains or wells flowing?			✓	estimated gpm
i. Adequate and sound riprap?			✓	
4. PSW Intake Structure concrete / metal				
a. Spalling, cracking, & scaling?		✓		Based on observation from embankment
b. Exposed reinforcement?		✓		Based on observation from embankment
c. Corrosion present?		✓		Based on observation from embankment
d. Manhole cover present?	✓			
e. Leakage?			✓	estimated gpm Unable to determine - not accessed
f. Trash rack adequate?	✓			
g. Inlet or trash rack obstructed?		✓		
h. Drawdown operative? closed / open			✓	Unable to determine - not operated
i. Ladder intact?	✓			Based on observation from embankment
j. Pedestal securely fastened?	✓			Based on observation from embankment
k. Stem bent?		✓		Based on observation from embankment
l. Stem guides operational?			✓	Unable to determine - not operated
m. Stem bandwheel present?	✓			
n. Do metal parts require painting?		✓		Based on observation from embankment
5. Abutment Contacts				
a. Erosion, cracks, or slips?		✓		location
b. Seepage?		✓		estimated gpm location
c. Rock riprap gutters intact?			✓	
d. Trees encroaching?		✓		
6. Auxiliary Spillway				
a. Obstructions?	✓			Fence, gas line and tree stump located at ASW outlet
b. Erosion, cracks, or slips?		✓		location Old healed over slip - no apparent movement or erosion
c. Rodent holes?		✓		number and locations
d. Roads, vehicle ruts, or animal trails?	✓			ATV path at ASW inlet
e. Low areas or ditches?		✓		location
f. Seepage?		✓		estimated gpm location

WATERSHED PullmanSITE NUMBER 1DATE 3/28/2019

ITEM	Y	N	N/A	REMARKS
7. PSW Conduit <u>concrete</u> <input checked="" type="checkbox"/> <u>metal</u> <input type="checkbox"/>				tailwater elevation Not surveyed
a. PSW Outlet submerged?		<input checked="" type="checkbox"/>		If yes, depth? If no, depth of flow? ~ 1"
b. Spalling, cracking, & scaling?		<input checked="" type="checkbox"/>		
c. Exposed reinforcement?		<input checked="" type="checkbox"/>		None on visible section
d. Joints displaced or offset?			<input checked="" type="checkbox"/>	Unable to determine at time of inspection
e. Joint material lost?			<input checked="" type="checkbox"/>	Unable to determine at time of inspection
f. Leakage?			<input checked="" type="checkbox"/>	Unable to determine at time of inspection
g. Conduit misaligned?			<input checked="" type="checkbox"/>	Unable to determine at time of inspection
8. Impact Basin <u>Plunge Pool</u> <input checked="" type="checkbox"/>				
a. Spalling, cracking, & scaling?			<input checked="" type="checkbox"/>	
b. Exposed reinforcement?			<input checked="" type="checkbox"/>	
c. Joints displaced or offset?			<input checked="" type="checkbox"/>	
d. Joint material lost?			<input checked="" type="checkbox"/>	
e. Joints leak?			<input checked="" type="checkbox"/>	
f. Dissipater deteriorating?			<input checked="" type="checkbox"/>	
g. Dissipater clean of debris?			<input checked="" type="checkbox"/>	
h. Toe drains visible?				Left? Yes <input checked="" type="checkbox"/> No <input type="checkbox"/> N/A <input type="checkbox"/> Right? Yes <input checked="" type="checkbox"/> No <input type="checkbox"/> N/A <input type="checkbox"/>
i. Toe drain animal guards in place?				Left? Yes <input checked="" type="checkbox"/> No <input type="checkbox"/> N/A <input type="checkbox"/> Right? Yes <input checked="" type="checkbox"/> No <input type="checkbox"/> N/A <input type="checkbox"/>
j. Toe drains damaged?				Left? Yes <input type="checkbox"/> No <input checked="" type="checkbox"/> N/A <input type="checkbox"/> Right? Yes <input type="checkbox"/> No <input checked="" type="checkbox"/> N/A <input type="checkbox"/>
k. Left Toe drain submerged?		<input checked="" type="checkbox"/>		If no, estimated flow (gpm) No flow at the time of the inspection
l. Right Toe drain submerged?		<input checked="" type="checkbox"/>		If no, estimated flow (gpm) No flow at the time of the inspection
m. Earth erosion?	<input checked="" type="checkbox"/>			Small depression near rodent hole located adjacent to the right toe drain
n. Adequate and sound riprap?	<input checked="" type="checkbox"/>			Riprap around PSW present but grassed over
o. Outlet channel obstructed?	<input checked="" type="checkbox"/>			See remarks section
9. Reservoir at <input checked="" type="checkbox"/> <u>above</u> <input type="checkbox"/> <u>below</u> <input type="checkbox"/> <u>normal pool</u>				water surface elevation Not surveyed
a. Buildings in floodpool?		<input checked="" type="checkbox"/>		If yes, provide number, location, and first floor elevation in remarks section
b. Slips or erosion on banks?		<input checked="" type="checkbox"/>		location
c. Debris?		<input checked="" type="checkbox"/>		If yes, type
d. Unsecured boats/docks?		<input checked="" type="checkbox"/>		
e. Sediment deposits?		<input checked="" type="checkbox"/>		location
10. Instruments				
a. Structure instrumented?			<input checked="" type="checkbox"/>	If yes, type
b. Monitoring performed?			<input checked="" type="checkbox"/>	
11. Development				
a. New development upstream of dam?		<input checked="" type="checkbox"/>		
b. New development downstream of dam?		<input checked="" type="checkbox"/>		
c. EAP plan and mapping adequate?		<input checked="" type="checkbox"/>		Last updated 8/5/2015

REMARKS: 8o. There is an existing 36" diameter culvert located approximately 25' downstream of PSW outlet.

11b. Appears that the outlet channel, downstream of the culvert, has recently been cleaned out. Excavated material appears to have been placed/spread below outlet of ASW. See photos.

Vehicle tracks on top of dam.

The culvert and the side drains are extremely corroded and have several holes in them.

No cellular service at site.

NRCS ENGINEER

PATRICIA MITCHELL

Digitally signed by PATRICIA MITCHELL
Date: 2019.04.02 13:41:43 -04'00'

DATE _____

SIGNATURE

L. Andrew Deichert

NRCS State Conservation Engineer

DATE 4/25/2019

PROFESSIONAL ENGINEER SEAL

PULLMAN SITE 1
2019 ANNUAL INSPECTION



ASW



RESERVOIR & RISER



US SLOPE



ASW INLET

PULLMAN SITE 1
2019 ANNUAL INSPECTION



ASW - OLD SLIP ON OUTSLOPE



BELOW ASW OUTLET - MATERIAL FROM OUTLET CHANNEL



ASW - OUTSLOPE

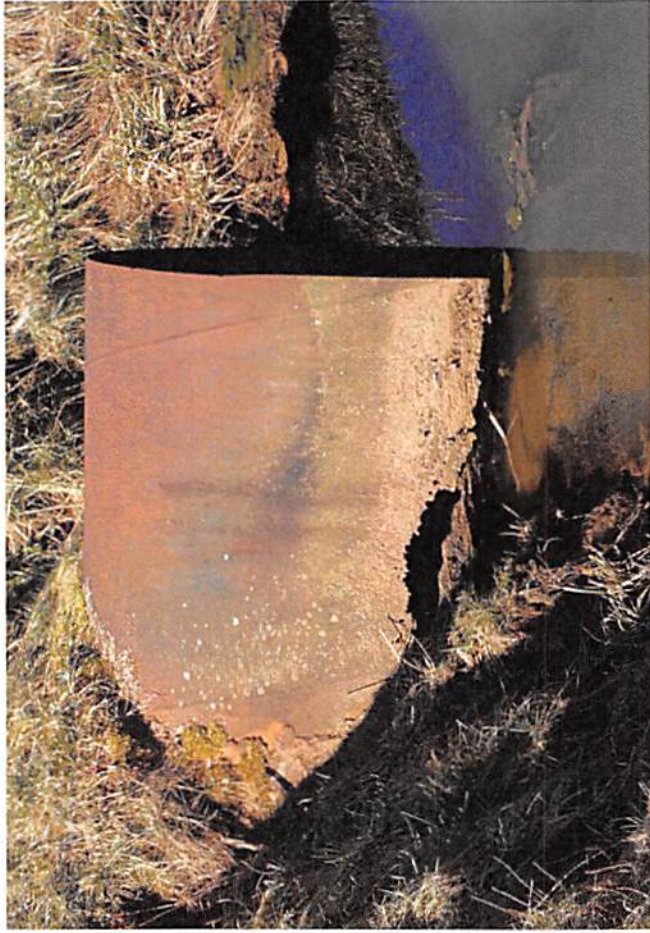


BELOW ASW OUTLET - MATERIAL FROM OUTLET CHANNEL

PULLMAN SITE 1
2019 ANNUAL INSPECTION



ASW OUTLET - STUMP, GASLINE AND FENCE



36" CULVERT - DS END OF PLUNGE POOL



FENCE AT TOE OF DS SLOPE

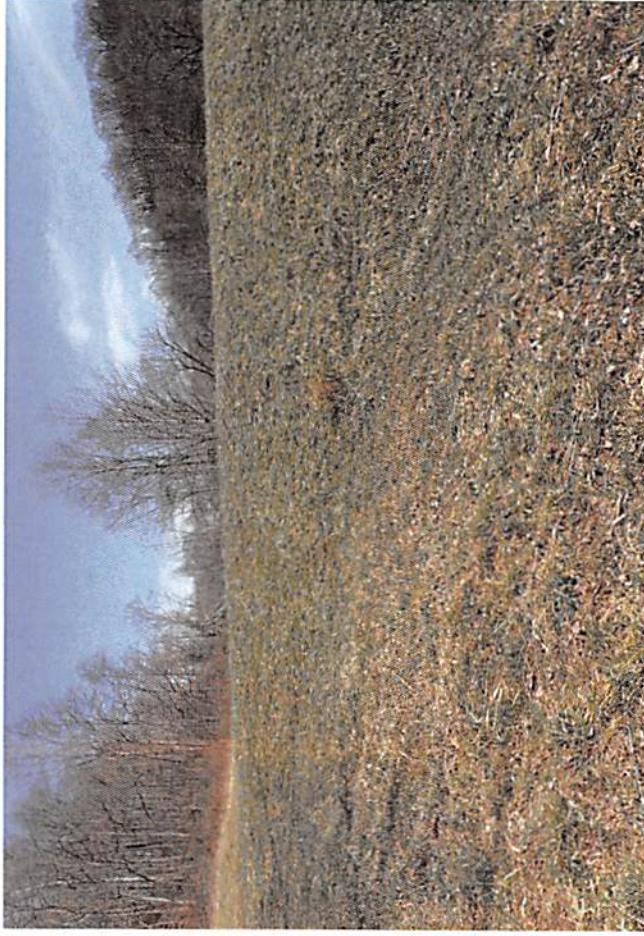


ASW INLET - ATV PATH

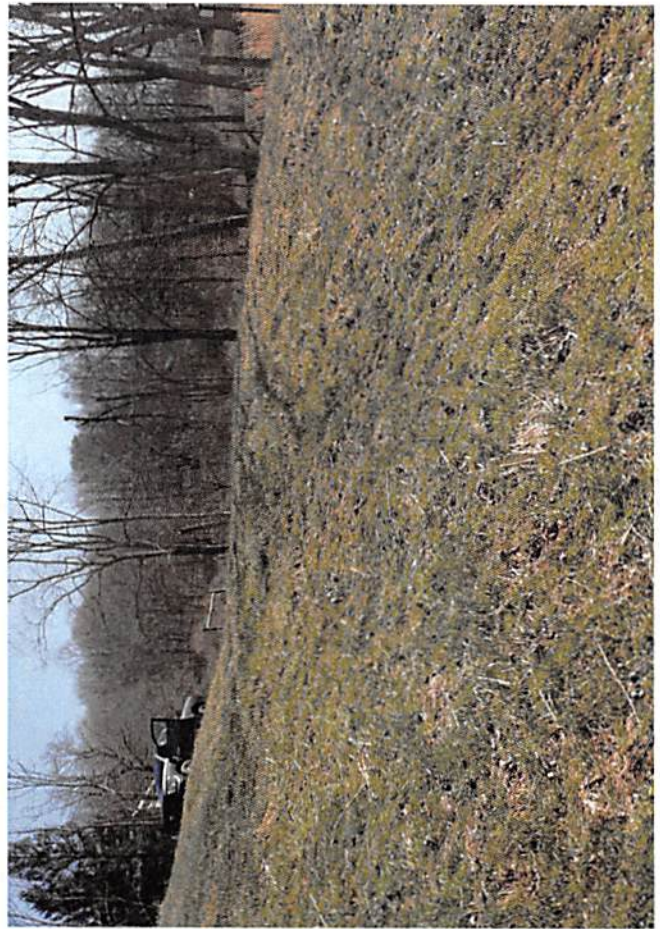
PULLMAN SITE 1
2019 ANNUAL INSPECTION



DS RIGHT ABUTMENT



DS SLOPE



DS LEFT ABUTMENT



DS SLOPE - DEER PATH



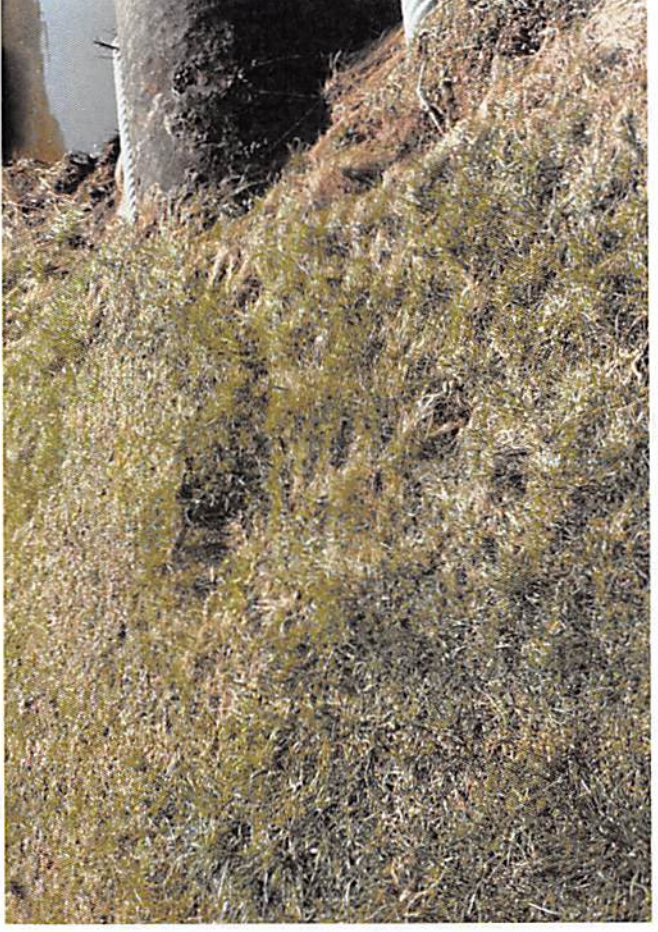
GAS LINE RUNNING ALONG TOE OF DS SLOPE



LEFT TOE DRAIN



ERODED AREA AT TOE OF DS SLOPE



DEPRESSION ADJACENT TO PSW AND RODENT HOLE

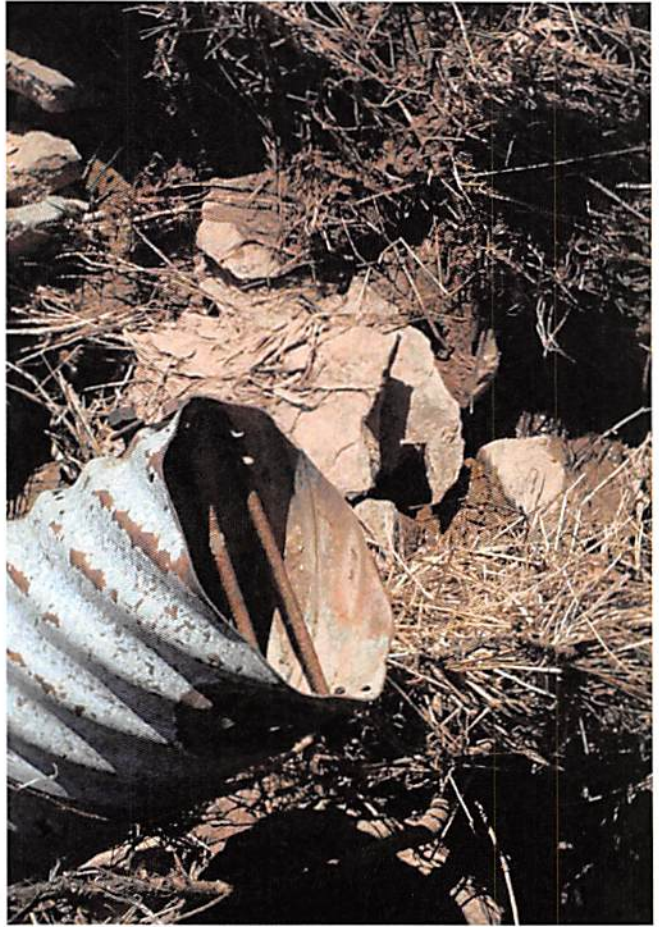
PULLMAN SITE 1
2019 ANNUAL INSPECTION



OUTLET CHANNEL



PLUNGE POOL



RIGHT TOE DRAIN



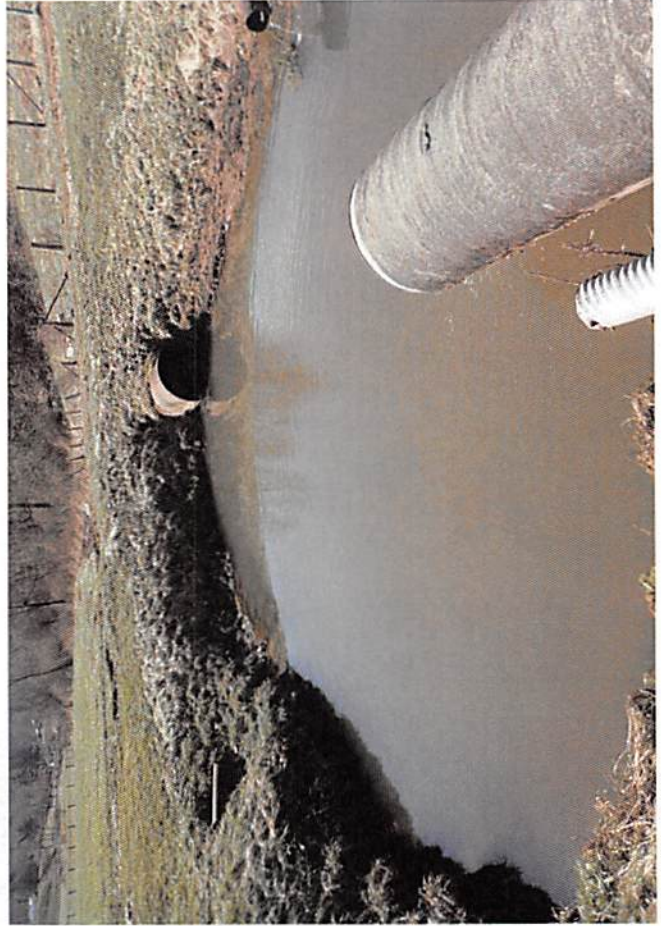
PLUNGE POOL



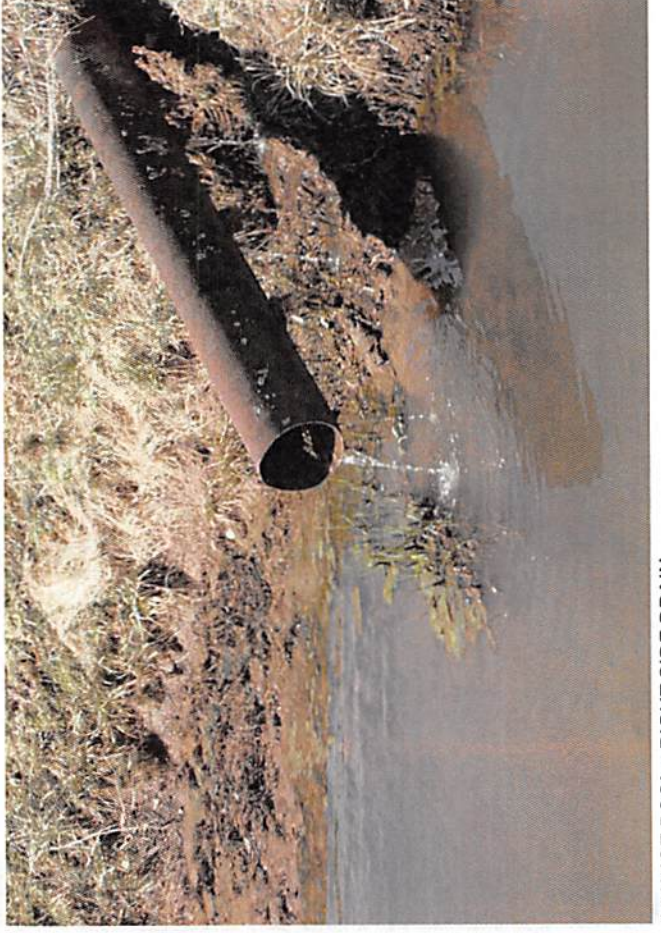
PLUNGE POOL - RIGHT SIDE DRAIN



PSW PIPE

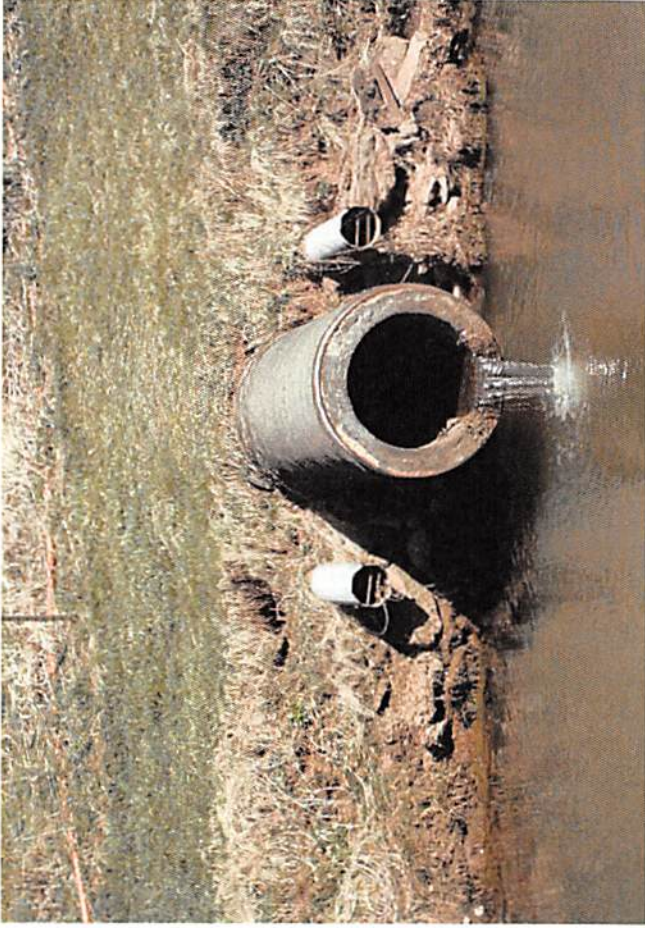


PLUNGE POOL



PLUNGE POOL - RIGHT SIDE DRAIN

PULLMAN SITE 1
2019 ANNUAL INSPECTION



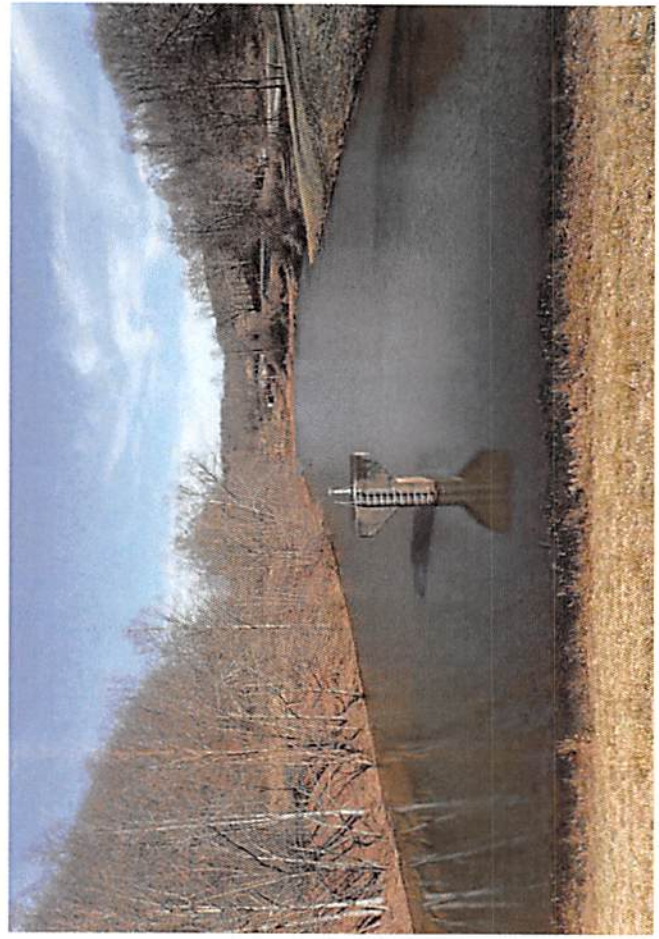
PSW & TOE DRAINS



RESERVOIR

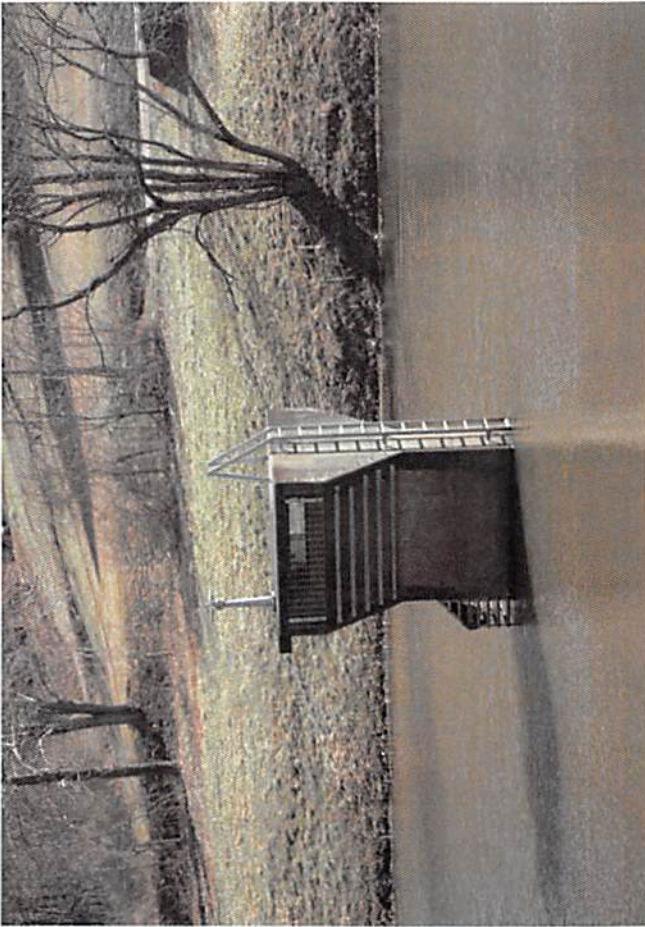


PSW



RESERVOIR

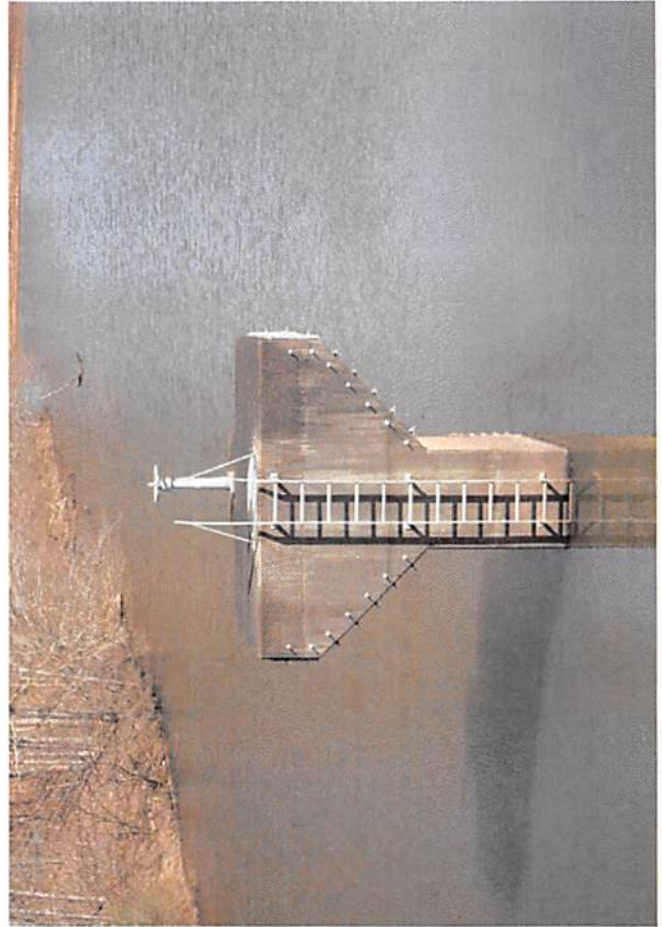
PULLMAN SITE 1
2019 ANNUAL INSPECTION



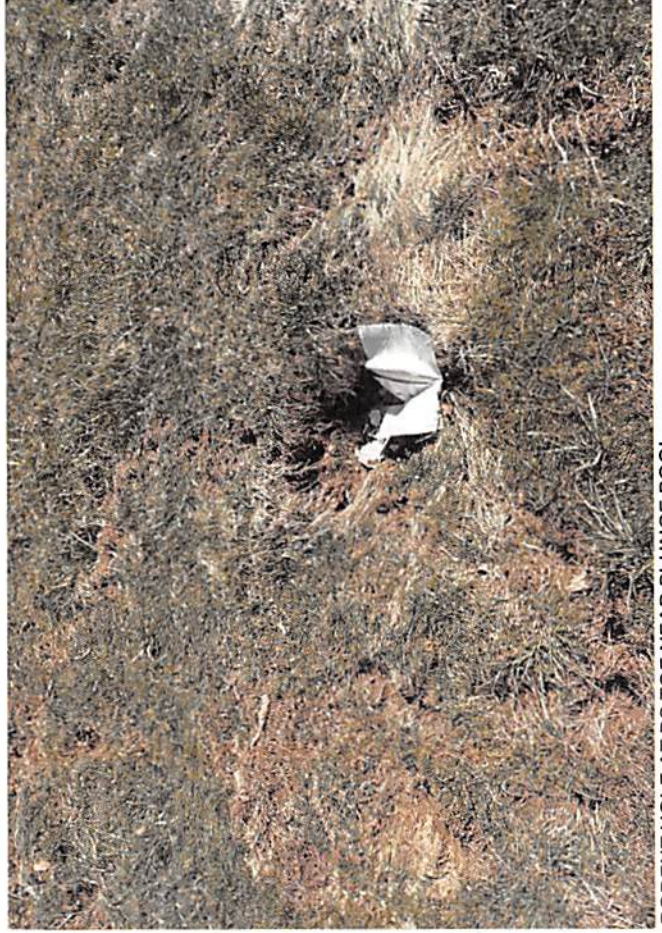
RISER



TOP OF DAM

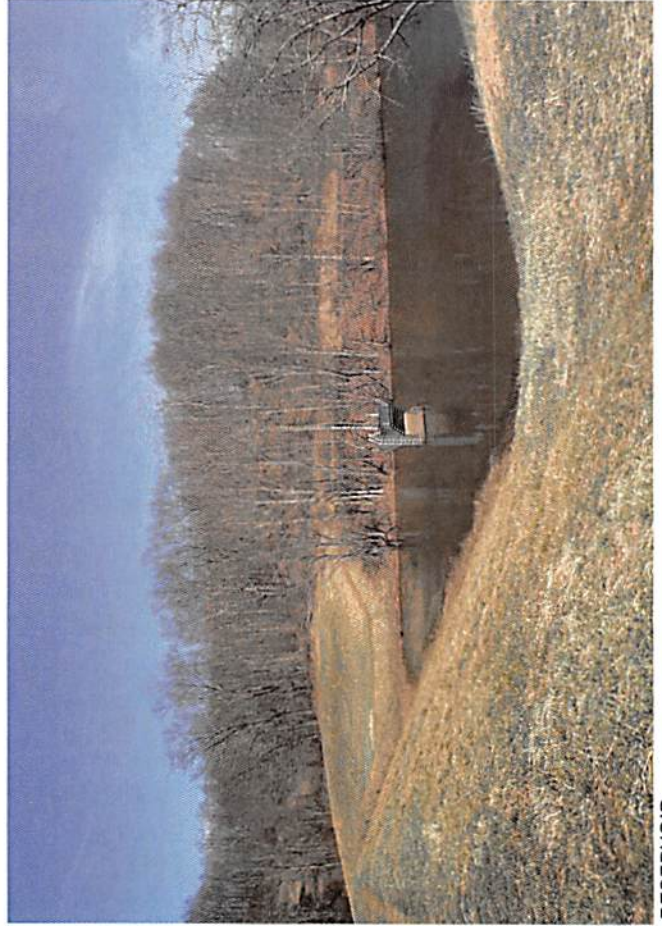


RISER



RODENT HOLE AT DS TOE NEAR PLUNGE POOL

PULLMAN SITE 1
2019 ANNUAL INSPECTION



RESERVOIR